

Rhondda Cynon Taf Community Wellbeing and Resilience Service

Corporate Parenting Board

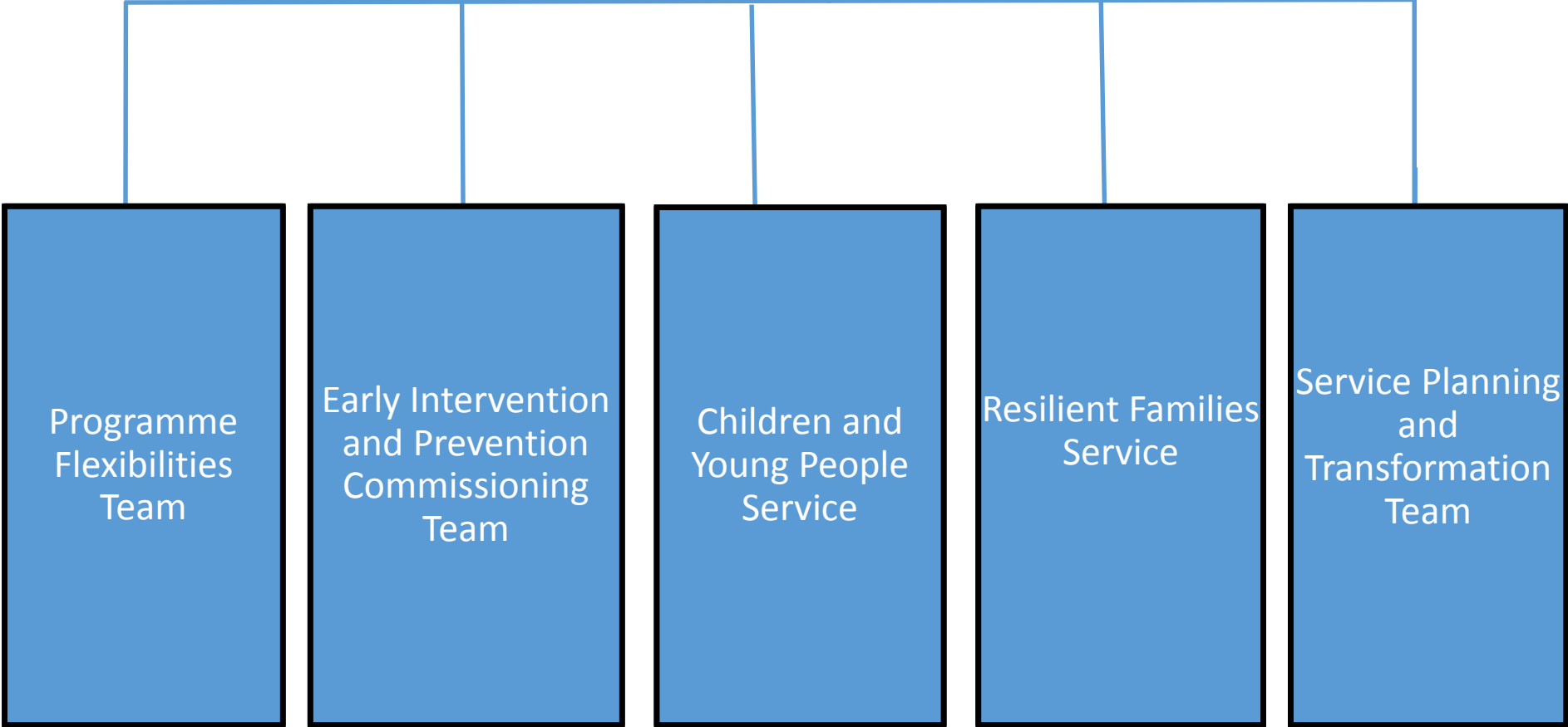
Tuesday 16th July 2019



© Rhondda Cynon Taf 2019

Head of Community Wellbeing and Resilience

Service Overview



Transferred services

Universal Childcare to Education

Family Information Service to IAA Team

Statutory Duties and Strategic Responsibilities

Statutory Duties

- Co-ordination of Youth Support Services
- Play Sufficiency Assessment

Strategic Responsibilities

- Early Years Co-construction Pathfinder Programme
- Funding Flexibilities Pathfinder Programme

Community Wellbeing and Resilience Service

Children and Young People Service

Youth Service / Play Service / Childcare Delivery Team

Resilient Families Service

ABR Team / CANS Team / Families Plus Team / Families Team / Parenting Support Team

Programme Flexibilities Team

Early Years Appraisal and Placement
Health and Therapies Staff

Early Intervention and Prevention Commissioning Team

Children and Communities Grant / FS Childcare Contract / FS Health Contract

Service Planning and Transformation Team

Management Information / Service Planning / Partnerships

Children and Young People Service

This service seeks to provide support and opportunities for children and young people aged 0-25 years to meet their developmental milestones, build their resilience and exercise their rights. This Service is managed by Jess Allen/Claire Hutcheon and is part of Children's Services.

- **Youth Engagement and Participation Service** is the Council's Youth Service that supports young people aged 11-25 to improve their resilience to deal with current and future challenges, supporting their wellbeing and their positive engagement in and contribution to the communities in which they live
- The **Play Development Service** will work alongside a range of partner organisations to provide play opportunities for children and young people aged 5-14 across RCT and also support children and young people who face barriers, to access play opportunities in their local communities.
- The **Childcare Delivery Team** provides CIW registered childcare across the Council's six Nursery settings, manages the three Children and Family Centres in Rhydfelin, Penrhys and Aman, monitors the quality of childcare across settings and provides training and development to these settings.

Programme Flexibilities Team

This team provides specialist support to both the Resilient Families Service and the Children and Young People's Service by providing childcare places as part of the package of support for families referred to the Resilient Families Service and providing specialist appraisal, assessment and therapeutic intervention. This Team is part of Children's Services and comprises of:

- Early Years System Appraiser
- Placement Advisory Officer
- RFS Specialist Health Visitors
- RFS Community Nursery Nurses
- Educational Psychologist
- Assistant Educational Psychologist
- Speech and Language Therapist

Resilient Families Service

This service seeks to provide early intervention support to build the resilience of families and prevent them from requiring statutory intervention. The Service is managed by Lisa Lewis and is part of Children's Services.

- The **Assessment Brokerage and Review Team** undertakes assessments with all families referred to the Service, creates an individual plan for every family plan and reviews the plan to ensure the work has been done.
- The **Families Plus Team** works with families that are close to the Children's Service threshold for intervention and require intensive support to reduce the level of risk within the family.
- The **Children with Additional Needs Service (CANS) Team** works with any family where the learning, physical or neuro-developmental needs of a child within the family is impacting on family life.
- The **Parenting Support Team** works with parents and children to develop early language and communication skills through play as well as supporting families to develop their parenting skills to manage their children's needs in a productive and positive way.
- The **Families Teams East and West** work with families that require support to improve the quality of family life and are employed by Barnardos.

Early Intervention and Prevention Commissioning Team

This team has responsibility for the commissioning of both internal and external services using the new £13.5M Children and Communities Grant and ensuring that these services comply with their contracts and deliver the agreed outcomes. As part of the changes the team is also responsible for managing the contracts of the Flying Start childcare providers. This Team is managed by Mandy Perry, is part of Public Health, Protection and Community Services and comprises:

- Performance Monitoring and Compliance Manager
- Compliance and Monitoring Officers
- Participation Officer
- Finance Officer

Service Planning and Transformation Team

This team manages the statutory functions of the Service, the collection analysis and dissemination of all performance and outcome data, the business planning and support functions and the management of private public and third sector partners involved in the delivery of the Resilient Families Programme. It also manages the development of Vulnerability Profiling on behalf of the whole Council and the use of the Capita One System across the Community Wellbeing and Resilience Service. This Team is managed by Geraint Evans and is part of Public Health Protection and Community Services. Roles within this team include:

- Management Information Officers
- Service Mapping and Analysis Officer
- RFP Partnerships Officer
- Grants Officer
- Business Support Officers
- Cwm Taf Early Years Vulnerability Profiling Development Officer

Our four priorities

1. Remodel the delivery of Early Years services
2. Integrate service delivery for children, young people and families
3. Improve local access to information advice and assistance
4. Continue to develop early intervention and prevention services

Reduce the number of children, young people and families requiring statutory intervention

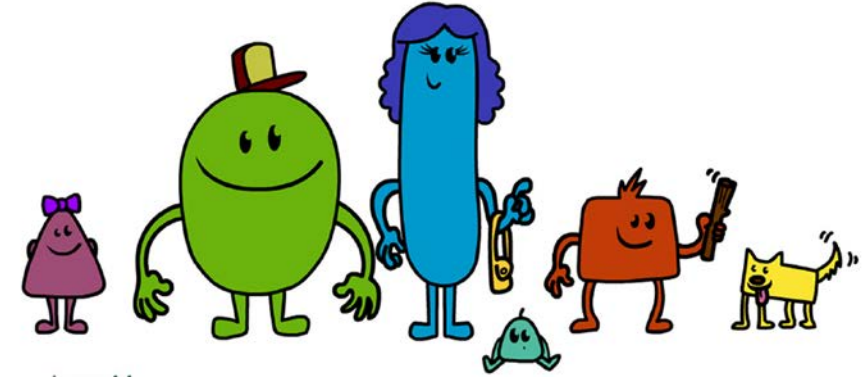
Our approach

- Trauma informed
- Strengths based
- Resilience focused
- Restorative based

All staff have received training in trauma and attachment, ACE Awareness, and Restorative Approaches.

All front line posts require professional qualifications and strengths based training. Currently 95 staff are fully trained RA Practitioners

Help parents to build skills and confidence
to provide buffering protection and
support for their children



Resilient Families Service



NICID



YEPS

Be the available trusted adult for children
and young people

Children and Young People
Service



Help parents to build skills and confidence to provide buffering protection and support for their children

Be the available trusted adult for children and young people



KINDNESS



Resilient Families Service

Children and Young People Service