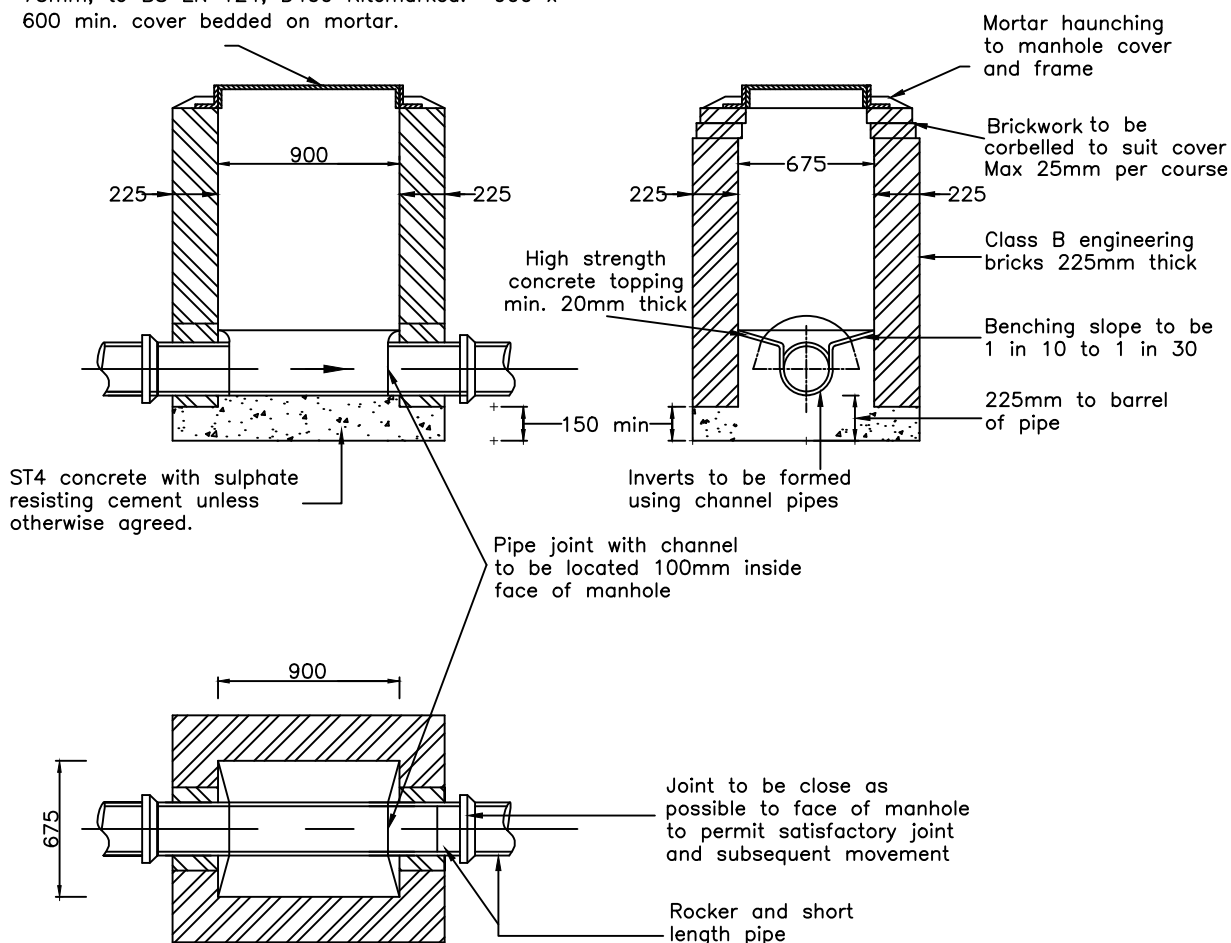


Rev.	Amendments	Date	Made By	Chk'd By

For all locations use double triangular 150mm depth cover and frame with minimum flange width of 75mm, to BS EN 124, D400 Kitemarked. 900 x 600 min. cover bedded on mortar.



**NOTES**

1. All dimensions are in millimetres unless otherwise stated.
2. Brickwork manholes should be a last case scenario. a Type F manhole will be considered as an alternative.
3. For Type D manholes, the internal dimensions are normally 900 x 675, but a manhole width should be increased for pipes larger than 225mm diameter to give 225mm benching each side of the pipe with the brickwork corbelled to suit the cover.

**MANHOLE DETAIL – TYPE D**

Depth From Ground Level to Soffit of Pipe Less Than 1m

**HIGHWAY DESIGN GUIDE STANDARD DETAILS**

**RHONDDA CYNON TAF  
COUNTY BOROUGH COUNCIL**



Drawn	DA
Checked	SZ
Date	Apr '11
Scale	NTS
Drg. No.	203
Rev.	