

AGENDA ITEM 3

RHONDDA CYNON TAF COUNTY BOROUGH COUNCIL

CABINET

21st JANUARY 2016

CWM TAF SAFEGUARDING BOARDS ANNUAL REPORTS 2014/15

REPORT OF THE GROUP DIRECTOR, COMMUNITY AND CHILDREN'S SERVICES IN DISCUSSION WITH THE RELEVANT PORTFOLIO HOLDER, COUNCILLOR FOREY

AUTHOR: NICOLA KINGHAM, CWM TAF SAFEGUARDING BOARD BUSINESS MANAGER, TEL NO: 01443 484523

1. PURPOSE OF THE REPORT

- 1.1 The purpose of the report is to share with Cabinet the Annual Reports for 2014/15 in relation to the Cwm Taf Safeguarding Children Board (CTSCB) and the Cwm Taf Safeguarding Adults Board (CTSAB).

2. RECOMMENDATIONS

It is recommended that the Cabinet:

- 2.1 Notes the content of the Cwm Taf Safeguarding Boards Annual Reports for 2014/15.
- 2.2 Endorses the priorities identified for 2015/16.

3 REASONS FOR RECOMMENDATIONS

- 3.1 The Cwm Taf Safeguarding Boards are required to produce an annual report each year identifying how they have progressed against the priorities that were agreed at the beginning of the year. These priorities are set out in the Boards' Annual/Strategic Plans.
- 3.2 From 6th April 2016, the Social Services and Wellbeing (Wales) Act 2014 will introduce a duty for the Boards to produce their annual reports by 31st July each year and their Annual Plans by 31st March each year. These will then be submitted to the Welsh Government.

4. BACKGROUND

- 4.1 The Cwm Taf Safeguarding Adults Board (CTSAB) is the multi-agency partnership which has responsibility for safeguarding adults at risk in Rhondda Cynon Taf and Merthyr Tydfil.
- 4.2 The CTSAB partners work together to protecting adults from abuse, reducing the risk of abuse, and supporting people to stop abuse where it happens.
- 4.3 The Cwm Taf Safeguarding Children Board (CTSCB) is the multi-agency partnership which has responsibility for safeguarding children in Rhondda Cynon Taf and Merthyr Tydfil.
- 4.4 The main responsibility of the CTSCB is to coordinate the work of the partner agencies who sit on the Board to safeguard and ensure the welfare of children and young people.

5. STRUCTURE OF THE BOARDS

- 5.1 Both Boards have developed a structure to support the delivery of their objectives and to carry out their functions effectively. The Boards' Business Plans are delivered by Sub Groups, all of which report to the Boards via Operational Committees, one for children and one for adults.

6. PERFORMANCE IN 2014/15

- 6.1 The attached Annual Reports (Appendices 1 and 2) provide an overview of the work carried out by the Boards in 2014/15, including the key achievements and performance during the year. The Reports also set out the priorities for further development and improvement in 2015/16.

7 EQUALITY AND DIVERSITY IMPLICATIONS

- 7.1 An Equality Impact Assessment (EqIA) screening form has been completed for the purpose of this report. There are no negative impacts identified and therefore a full EqIA is not required.

8 CONSULTATION

- 8.1 The partners of both Boards have been consulted during the development of the Annual Reports.
- 8.2 Each Annual Report has been approved by the relevant Cwm Taf Safeguarding Board.

9 FINANCIAL IMPLICATION(S)

- 9.1 The CTSCB's operational expenses are currently funded by an annual contribution from each statutory partner agency, with the staffing costs of the Business Unit being met by the local authorities.
- 9.2 The CTSAB is not currently funded and the work of the Board and its Sub Groups is carried out on an in-kind basis.
- 9.3 From 1st April 2016, the Safeguarding Business Unit and associated costs for both the Children's and Adults Safeguarding Boards, will be supported by funding contributions from the statutory partners, based on the funding formula as set out in the SS&WB Act 2014.

10. LEGAL IMPLICATIONS OR LEGISLATION CONSIDERED

- 10.1 Safeguarding Children: Working Together Under the Children Act 2004" sets out how all relevant agencies and professionals in Wales should work together to safeguard and protect children's welfare and protect them from harm.
- 10.2 In July 2007, the Welsh government launched "In Safe Hands" which sets out the guidance in relation to protection and support for vulnerable adults from abuse and inappropriate care.
- 10.3 The new Social Services and Wellbeing (Wales) Act 2014 has set a new direction in the establishment of regional safeguarding boards across Wales. The Act defines the functions of the Boards and sets out new requirements, including the setting up of a National Independent Safeguarding Board.

11. LINKS TO THE COUNCILS CORPORATE PLAN/OTHER CORPORATE PRIORITIES/SIP

- 11.1 Both Boards have contributed to elements of the work of the Local Service Board by reporting on safeguarding activity. They have also contributed to the development and delivery of the Single Integrated Plans in both RCT and Merthyr Tydfil.

Other Information:-

Relevant Scrutiny Committee:

- ***Health and Wellbeing***
- ***Children and Young People***

LOCAL GOVERNMENT ACT 1972

AS AMENDED BY

THE LOCAL GOVERNMENT (ACCESS TO INFORMATION) ACT 1985

RHONDDA CYNON TAF COUNTY BOROUGH COUNCIL

CABINET

21ST JANUARY 2016

**REPORT OF (DIRECTORATE) IN DISCUSSIONS WITH THE RELEVANT
PORTFOLIO HOLDER COUNCILLOR FOREY**

Item:

CWM TAF SAFEGUARDING BOARDS ANNUAL REPORTS 2014/15

Background Papers:

None

**Contact Officer: Nicola Kingham, CTSAB Business Manager.
Tel: 01443 484523**

CWM TAF SAFEGUARDING CHILDREN BOARD

**ANNUAL REPORT
2014/15**

Version 2: 04/12/2015

INTRODUCTION

The Cwm Taf Safeguarding Children Board (CTSCB) is the multi-agency partnership which has responsibility for safeguarding children in Rhondda Cynon Taf and Merthyr Tydfil. It monitors how well agencies and other partnerships undertake their work with regard to safeguarding and ensures safeguarding is embedded in all working practices.

The draft guidance under Section 130 (4) of the SS&WB Act 2014 defines a 'child at risk' as a child who:

- a) is experiencing or is at risk of abuse, neglect or other kinds of harm, and
- b) has needs for care and support (whether or not the authority is meeting any of those needs).

This report summarises the work undertaken by the CTSCB to achieve its objectives during 2014/15. It also summarises the areas of development identified for 2015/16.

The CTSCB will make this report public by placing it on each Local Authority's website and the Cwm Taf Safeguarding Boards website (www.cwmtafsafeguarding.org). The report will also be presented within each Local Authority, to its Elected Members and the key statutory partnerships within the County Borough. Partner agencies will also distribute through their recognised governance processes.

OUR VISION

To ensure that children and young people in Merthyr Tydfil and Rhondda Cynon Taf, up to the age of 18, are protected from abuse and neglect, their welfare safeguarded and promoted and they live in an environment that promotes their wellbeing and life chances.

The Cwm Taf Local Safeguarding Children Board will listen to, and hear the views of children and young people.

OUR AIMS

The key objectives of the CTSCB, as defined by the Social Services and Wellbeing Act 2014 (SS&WB Act 2014), are:

- a) to protect children within its area who are experiencing, or are at risk of abuse, neglect or other kinds of harm, and
- b) to prevent children within its area from becoming at risk of abuse, neglect or other kinds of harm.

The CTSCB also operates under existing guidance in relation to children at risk of harm and the powers and duties under the Children Act 1989, in particular the duty under section 47 of that Act.

The CTSCB aims to meet its objectives by:

- Working together in partnership with children, young people, the community, statutory partners, voluntary partners and key strategic partnerships.
- Developing and pursuing opportunities for collaborative working with neighbouring Safeguarding Children Boards.
- Being clear about what elements of safeguarding children the Cwm Taf Safeguarding Children Board and the other strategic partnerships are accountable for and monitoring and reviewing their effectiveness.
- Determining what statutory partners should deliver in relation to safeguarding children and how the CTSCB can contribute to these agendas.
- Holding partner agencies to account for their safeguarding responsibilities

THE STRUCTURE OF THE CWM TAF SAFEGUARDING CHILDREN BOARD

The CTSCB is chaired jointly by the Director of Community and Children Services (RCT County Borough Council) and the Chief Officer for Social Services (Merthyr Tydfil County Borough Council).

The membership of the Board complies with the guidance issued under Part 7 (Section 134(2) of the SS&WB Act 2014 and is as follows:

CWM TAF SAFEGUARDING CHILDREN BOARD MEMBERSHIP	
Director of Community & Children Services (RCT) - Co-Chair	Rhondda Cynon Taf CBC The Pavilions, Clydach Vale, Rhondda Cynon Taf, CF40 2XX
Chief Officer for Social Services (Merthyr Tydfil) - Co-Chair	Merthyr Tydfil CBC Civic Centre, Castle Street, Merthyr Tydfil, CF47 9AN
Head of Safeguarding, Cwm Taf University Health Board - Vice Chair	Cwm Tâf University Health Board LHB Headquarters, Ynysmeurig House Abercynon, CF45 4SN
Head of Children's Services (MTCBC)	Merthyr Tydfil CBC Unit 5, Pentrebach Merthyr Tydfil, CF48 4TQ

CWM TAF SAFEGUARDING CHILDREN BOARD MEMBERSHIP	
Service Director, Children's Services (RCT)	Rhondda Cynon Taf Children's Services Tŷ Pennant, Catherine Street Pontypridd, CF37 2TB
Executive Nurse Director Cwm Taf University Health Board	Cwm Taf University Health Board LHB Headquarters Ynysmeurig House, Abercynon, CF45 4SN
Named Doctor for Safeguarding - Cwm Taf University Health Board	Cwm Taf University Health Board Royal Glamorgan Hospital Llantrisant
Superintendent	South Wales Police Pontypridd Police Station, Berw Road, Pontypridd, CF37 2TR
Assistant Chief Executive	National Probation Service 4 -9 Broadway Pontypridd, CF37 1BA
Assistant Chief Executive	South Wales 2, Wales Community Rehabilitation Company Bridgend Probation Office, Tremains House, Tremains Road, Bridgend, CF31 1TZ
Chief Officer	Voluntary Action Merthyr Tydfil (VAMT), Voluntary Action Centre, 88-90 High Street, Pontmorlais, Merthyr Tydfil, CF47 8UH
CTSB Business Manager	Rhondda Cynon Taf CBC Ty Catrin, Maritime Industrial Estate Maesycod Pontypridd, CF37 1NY
Director of Place and Transformation (MTCBC)	Merthyr Tydfil CBC Civic Centre, Castle Street, Merthyr Tydfil, CF47 8AN
Service Director, Adult Services (RCT)	Rhondda Cynon Taf CBC Ty Elai, Dinas Isaf East, Williamstown Tonypandy, CF40 1NY
Head of Safeguarding & Standards (RCT)	Rhondda Cynon Taf Children's Services Tŷ Catrin, Maritime Industrial Estate, Maesycod, Pontypridd, CF37 1NY
Safeguarding Manager, Adults and Children (MTCBC)	Merthyr Tydfil CBC Unit 5, Pentrebach Merthyr Tydfil, CF48 4TQ

CWM TAF SAFEGUARDING CHILDREN BOARD MEMBERSHIP	
Housing & Community Safety Manager	Merthyr Tydfil CBC Civic Centre, Castle Street, Merthyr Tydfil, CF47 9AN
Head Of Community Housing Services	Rhondda Cynon Taf CBC Ty Elai, Dinas Isaf East, Williamstown Tonypandy, CF40 1NY
Head of Cwm Taf Youth Offending Service	Youth Offending Service Unit 2 Fairway Court Tonteg Road Treforest Industrial Estate Pontypridd, CF37 5UA
Service Director for Schools and Community (RCT)	Rhondda Cynon Taf CBC Tŷ Trevithick Abercynon, CF45 4UQ
Head of Service - Learning (MTCBC)	Merthyr Tydfil CBC, Unit 5, Triangle Business Park, Pentrebach, Merthyr Tydfil, CF48 4TQ
Head of Service, Adult Services (RCT)	Rhondda Cynon Taf CBC Community Services Municipal Buildings, Llewellyn Street, Pentre, CF41 7XW
Head of Legal - Community Care and Children (RCT)	Rhondda Cynon Taf Legal Services Taff Ely Principal Office Court House Street Pontypridd
Manager / Interlink Chair	TEDS (Treatment & Education Drug Service), Engine House, Depot Road, Aberdare, CF44 8DL
Designated Nurse for Safeguarding Children and LAC, Public Health Wales	Public Health Wales Unit 1 Charnwood Court Heol Billingsley Parc Nantgarw Cardiff, CF15 7QZ.

The CTSCB has developed a structure to support the delivery of its objectives and to carry out its functions effectively. The operational expenses of the Board are funded by an annual contribution from each statutory partner agency, with the staffing costs of the Business Unit being met by the local authorities.

The work programme for the CTSCB, as set out in its Business Plan 2012-2015, is delivered by a number of Sub Groups (see chart below) all of which report to the Board via the Operational Committee. This enables the Board to focus on its overall responsibility of

setting the strategic direction for all partner agencies and challenging them on the effectiveness of safeguarding measures.

The responsibilities of each of the Sub Groups are as follows:

Operational Committee - key to the overall effectiveness of the CTSCB. In delivering the Business Plan, it will ensure that the priorities of the Board and the work of the Sub Groups are taken forward. It will also ensure that information about measuring outcomes and the effectiveness of the CTSCB is produced.

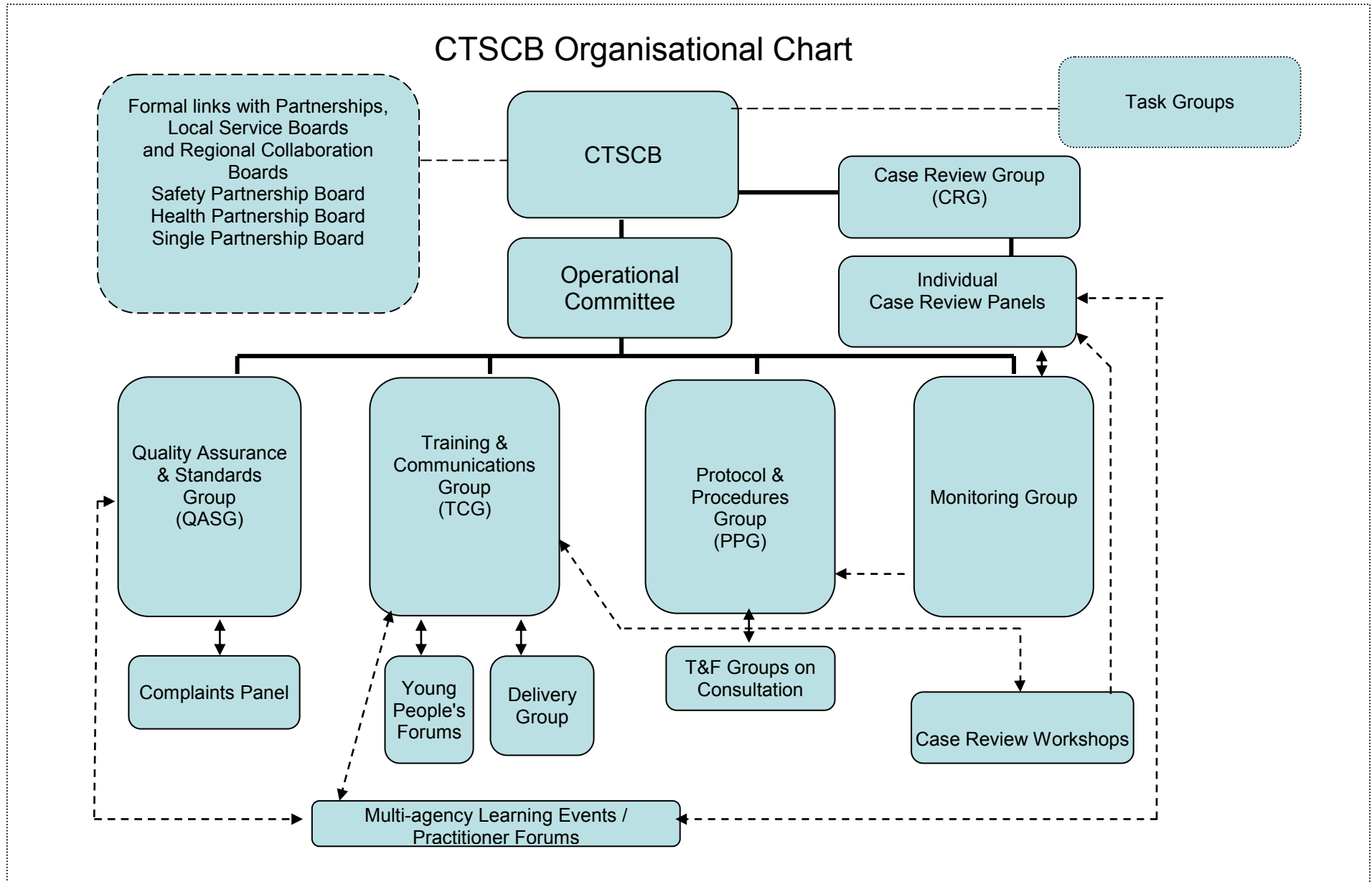
Quality Assurance and Standards Sub Group - encourages high standards of practice through the monitoring and evaluation of performance and reviewing the work undertaken by all agencies, including causes for concern, complaints and making recommendations about the actions required.

Case Review Group/Monitoring Group - ensures that the CTSCB discharges its functions in relation to Child Practice Reviews and promotes a positive culture of multi-agency learning and more effective sharing of that learning.

Policies and Protocols Sub Group - develop, review and update policies, protocols and procedures whose purpose is to co-ordinate what is done by each representative body to safeguard children and promoting the welfare of children within the Cwm Taf area.

Training and Communications Sub Group - has a responsibility to ensure that safeguarding training is delivered to a consistently high standard, and that a process exists for evaluating the effectiveness of training.

APPENDIX 1



APPEN DIX 1

OUR PRIORITIES IN 2014/15

In our Business Plan for 2012-2015 we identified the following **Strategic Outcomes** for the CTSCB:

1. Children are protected and kept safe from significant harm and repeat significant harm
2. All CTSCB partners are informed and held to account for their safeguarding responsibilities.
3. Children, young people, parents and carers are consulted and listened to.
4. All members of the community are informed of the role they can play to safeguard children and young people.
5. The safeguarding actions as specified in the Merthyr Tydfil and RCT Single Integrated Plans are delivered effectively.

The Board developed a work programme that detailed the actions to achieve these priorities.

KEY ACHIEVEMENTS IN 2014/15

Our achievements for 2014/15 against each of our priorities are set out below.

Children are protected and kept safe from significant harm and repeat significant harm

We made sure that partner agency staff were provided with up to date **protocols and guidance** to support and improve safeguarding practice. This included the development of a new **Child Protection Plan** to ensure that we continue to safeguard children and achieve positive outcomes. We developed and/or revised safeguarding guidance on **Social Networking, Conferences and Core Groups** and a **Child Protection Policy** for schools.

We delivered an effective **training and awareness raising** programme with over 1,600 delegates undertaking multi-agency safeguarding training, up to Level 3. We ensured that our training programmes were updated with best practice and themes arising from case audits and reviews. We also commenced the development of the **Cwm Taf Safeguarding Boards website** for professionals and the public to access information on safeguarding.

Through our Quality Assurance Sub Group we carried out a programme of **audits and reviews** to support the improvement of multi-agency safeguarding practice. This included dealing with areas of concern raised by professionals and complaints made by the public and ensuring that appropriate improvement actions were implemented.

The Board co-ordinated a multi-agency approach to the provision of preventative services for children who display **risk-taking behaviour** and developed the multi-agency elements of the **Anti-Social Behaviour** preventative strategy. We also implemented the **All Wales Strategy for Missing Children** and the **All Wales Protocol on Sexual Exploitation**.

Through our Case Review Group, we monitored action plans in relation to four **Child Practice Reviews**.

Finally, we commenced the development of the Cwm Taf **Multi Agency Safeguarding Hub** (MASH) to improve multi agency information sharing and to act as the single point of contact for all professionals to report safeguarding concerns across Cwm Taf. The MASH underwent a phased approach to implementation during the latter part of 2014/15 with the intention that it would be fully operational in 2015/16.

All CTSCB partners are informed and held to account for their safeguarding responsibilities

We encourage high standards of practice by all those involved in child protection work through the quality assurance function. In 2014/15 we did this through the monitoring and evaluation of multi-agency **Child Protection activity** (see section on Monitoring Performance below).

The Board established a **reporting framework** with minimum requirements and timescales for partner agencies, strategic partnerships and community partnerships. This was partially achieved, with work continuing into 2015/16.

We improved links with other strategic groups, including the **Cwm Taf Sexual Violence and Domestic Abuse Forum** (SVDAF) and the Board completed work to ensure that there are effective **anti-bullying practices** within schools and other community based groups.

Children, young people, parents and carers are consulted and listened to

Our Training and Communications Sub Group carried out a review of **consultation and engagement** arrangements and began the process of developing a **Communication Strategy** for the Board.

We have also ensured that there are appropriate materials available to keep children and their families informed and to obtain relevant feedback. This has involved the development of a new **Child Practice Review leaflet** and the development of the **Cwm Taf Safeguarding Boards' website**.

All members of the community are informed of the role they can play to safeguard children and young people

Linked to the above, the Training and Communications Sub Group worked towards strengthening our approach to awareness-raising in the community and this has involved the development of a **multi-media campaign**. This work is

ongoing and will be supported by the implementation of the **Cwm Taf Safeguarding Boards' website**.

The safeguarding actions as specified in the Merthyr Tydfil and RCT Single Integrated Plans are delivered effectively

The Board has strengthened governance arrangements with the **Local Service Boards** (LSB) and each LSB has been informed about safeguarding activity through the CTSCB Annual Report. We have contributed to the delivery streams of the **Single Integrated Plans** in both RCT and Merthyr Tydfil.

MONITORING PERFORMANCE IN 2014/15

To ensure that all partners work towards achieving improved outcomes for vulnerable children in Cwm Taf, performance activity is regularly monitored and any areas of concern are highlighted and addressed.

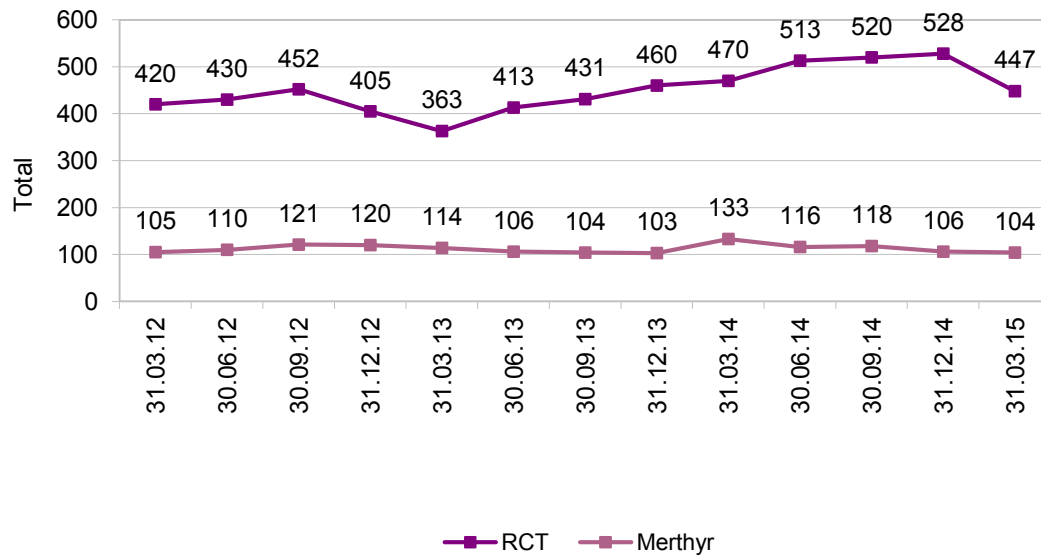
During 2014/15, the following areas of performance in relation to child protection were monitored by the Board:

Numbers on the Child Protection Register

The number of children on the Child Protection Register (CPR) is monitored on a quarterly basis by the Board's Quality Assurance Sub Group. In RCT the numbers rose in RCT during 2014/15 but dropped towards the end of the year. The numbers in Merthyr Tydfil decreased during the year.

	31.03.14	30.06.14	30.09.14	31.12.14	31.03.15
RCT-Numbers on CPR	471	510	519	528	450
Merthyr-Numbers on CPR	133	116	118	106	105

Number of Children on the Child Protection Register



The numbers on the CPR per 10,000 population in Wales at the end of 2014/15 was 46.6. Both RCT (89.8) and Merthyr Tydfil (84.2) had the highest rate per 10,000 population in Wales.

Child Protection Registration by age

In both local authorities the highest number of registrations is in the 1-4 years age group.

RCT:

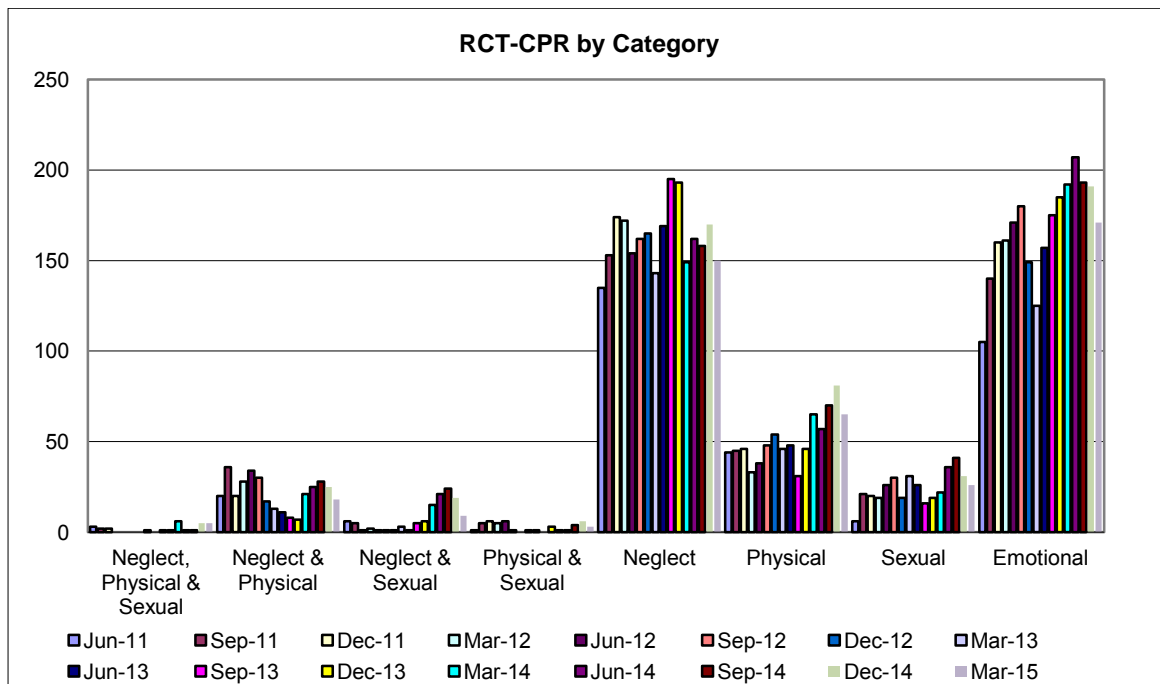
	31-Mar-14	30-Jun-14	30-Sep-14	31-Dec-14	31-Mar-15
Unborn	0	0	0	0	0
Under 1	51	57	64	63	45
1-4	160	177	166	177	153
5-9	130	142	160	161	137
10-15	122	123	118	111	99
16-18	8	11	11	16	13
Total	471	510	519	528	447

MT:

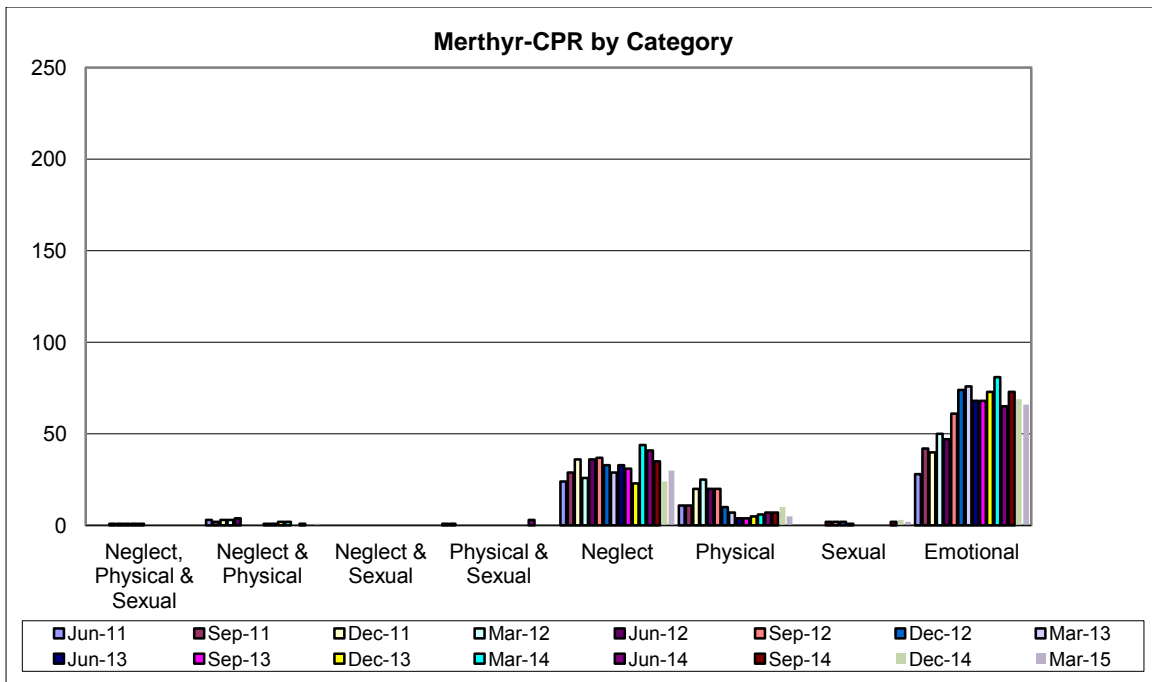
	31-Mar-14	30-Jun-14	30-Sep-14	31-Dec-14	31-Mar-15
Unborn	0	0	0	0	0
Under 1	15	8	11	14	10
1-4	39	40	39	33	31
5-9	36	30	31	28	30
10-15	35	33	32	24	24
16-18	8	5	5	7	9
Total	133	116	118	106	104

Child Protection Registration by category

In RCT the highest numbers of children on the register were in the Neglect and Emotional categories, although the latter had continued to decrease during the year.

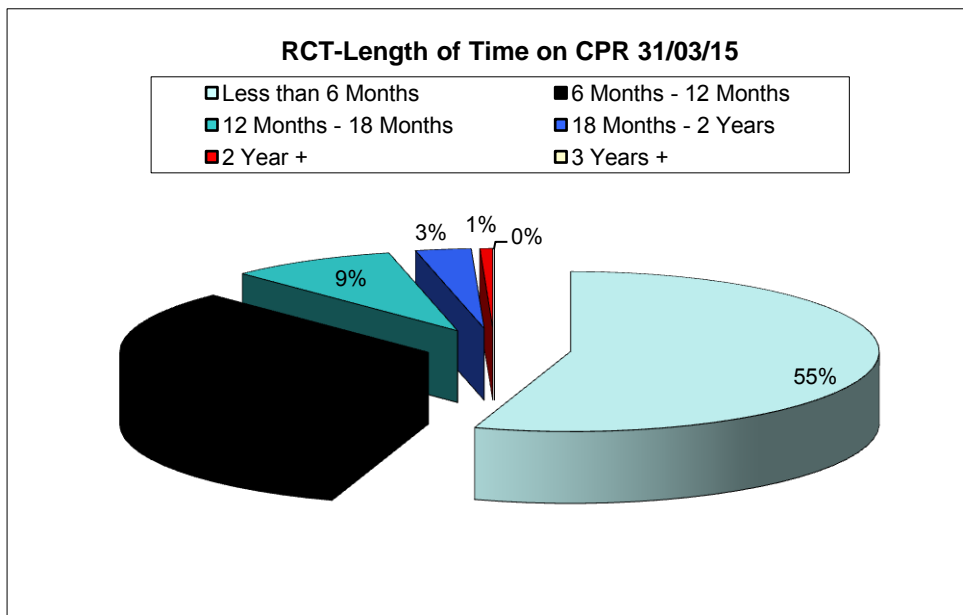


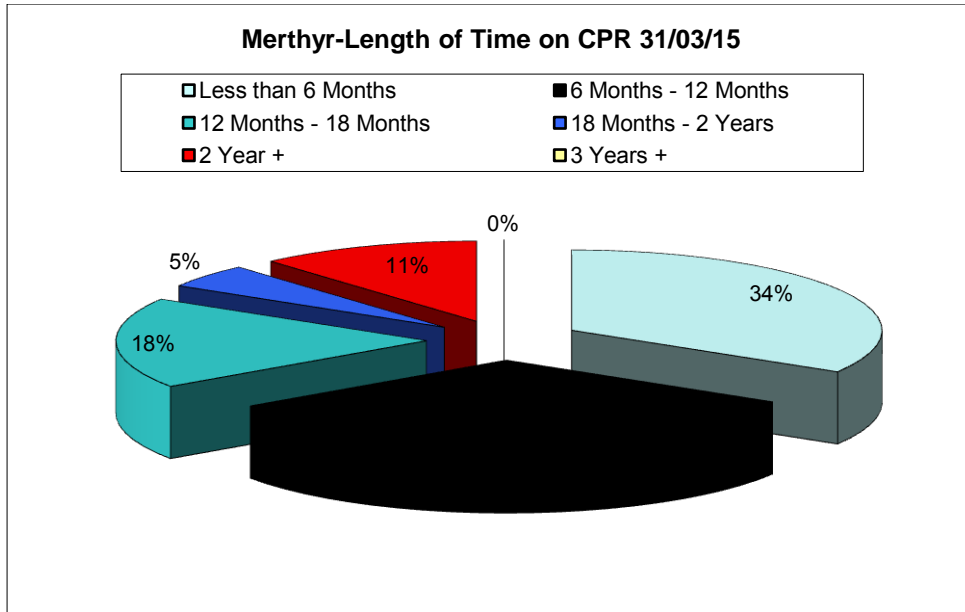
In Merthyr Tydfil, the numbers categorised under Emotional remain the highest, although there was a decrease in this category as the year progressed. There has also been a decrease in the numbers of children in the Neglect category.



Length of time on the register

At the end of 2014/15, both in Merthyr Tydfil and in RCT, the highest proportion of children had been on the register for less than 6 months. Three children in RCT had been on the register for at least 2 years. These cases will have undergone an audit, as part of the quality assurance function of the Board, to identify the reasons and make recommendations to address any issues.

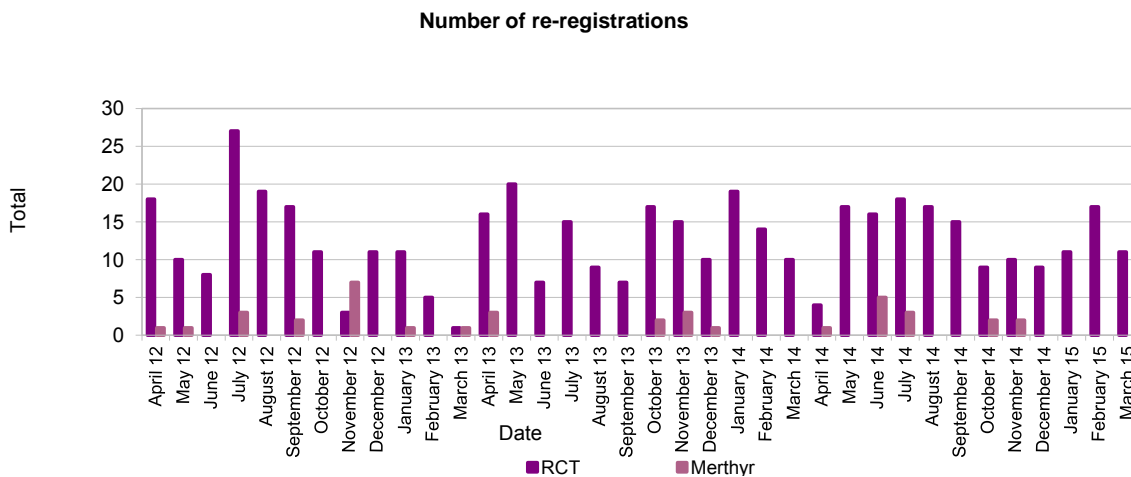




Number of Re-registrations

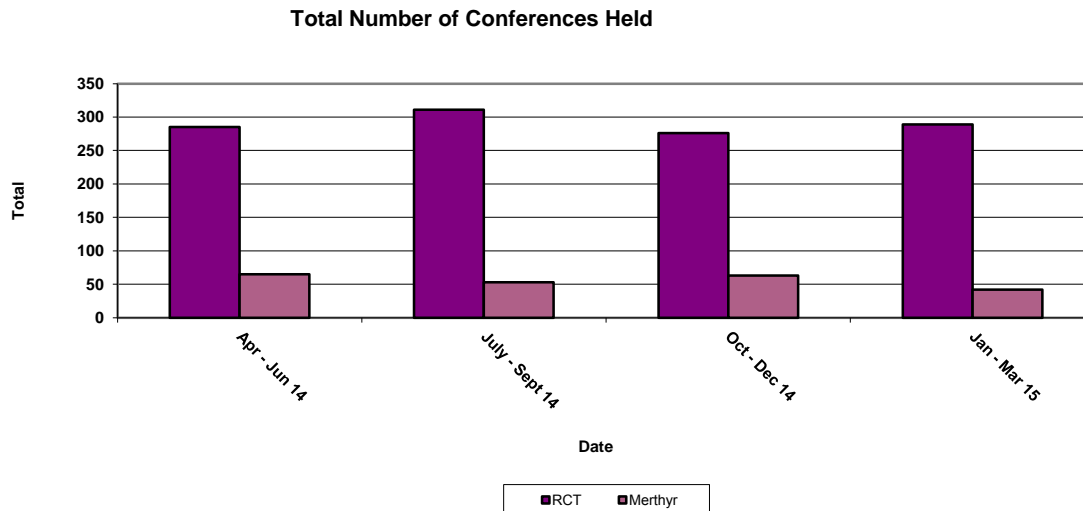
The number of re-registrations can indicate that the child protection processes are not achieving the planned outcomes to keep children safe and could be a cause for further investigation.

Of the new CP registrations in Merthyr Tydfil in 2014/15, 13 out of 111 were re-registrations (11.7%). In RCT, this figure was 154 out of 715 (21.5%). An audit of these cases will be carried out by the QASG in 2015/16.



Number of Child Protection conferences held

This is used as an indicator of the volume of work undertaken by agencies and Children Services. This figure is monitored to ensure that conferences are held within timescales and have appropriate representation. In Cwm Taf an average of just under 98% of conferences were held within timescales during 2014/15.



CO-OPERATION AND COLLABORATION

The CTSCB has contributed to elements of the work of the Local Service Boards by reporting on safeguarding activity. It has also contributed to the development and delivery of the Single Integrated Plans in both RCT and Merthyr Tydfil.

By collaborating with other partnerships the Board ensures that there is clarity on what elements of safeguarding the CTSCB is accountable for and which elements the other strategic partnerships are accountable for.

The CTSCB raises awareness about safeguarding children and young people and actively seeks opportunities for children and young people to become engaged in its work.

Through the Child Practice Review process, the CTSCB has actively developed and encouraged collaborative working with neighbouring regional Safeguarding Children Boards to improve outcomes for those children and young people in need of protection and safeguarding.

OUR PRIORITIES FOR 2015/16

As part of the Board's review of the annual work programme and in establishing the priorities for the coming year, the following priority areas have been highlighted:

- Consider opportunities for the integration of work across children and adults safeguarding
- Launch the Cwm Taf Safeguarding Boards website
- Official launch of the Cwm Taf Multi-Agency Safeguarding Hub (MASH)

- Ensure that the Board is compliant and ready for the implementation of the new Social Services and Wellbeing (Wales) Act, which is due to start from 6 April 2016.
- Development of an improved reporting framework for the Board and its Sub Groups to report on safeguarding activity
- Ensure that there is a multi agency approach to Child Sexual Exploitation involving the sharing of information and intelligence to support practice
- Strengthen approaches to awareness raising in the community and the engagement of children and young people, ensuring they have a strong voice in driving forward the safeguarding agenda in our region.
- Develop a Cwm Taf Looked After Children Strategy to ensure that preventative services are appropriately targeted.

HOW TO REPORT A CONCERN

If you suspect that a child or young person is being harmed or is at risk of being harmed then you have a duty to report it **immediately**. All calls concerning worries about children are treated seriously. Contact your local Safeguarding Team on the numbers provided below:

In Rhondda Cynon Taf: 01443 425003
In Merthyr Tydfil: 01685 725000

Opening Hours:

Monday - Thursday 8.30am - 5.00pm

Friday - 8.30am - 4.30pm

Out of Hours Emergencies (for both RCT and Merthyr Tydfil):

To contact Children's Services outside office hours, at weekends and bank holidays, ring **Cwm Taf Emergency Duty Team on 01443 743665**.

If you suspect a child or young person is at **immediate risk of harm** call **999** and speak to the **Police**.

If it is found that a child is being abused or is at risk of significant harm professionals will work together with the family to ensure that the child can be protected.

If you would like to report a non-urgent incident however, or have a problem or general query, you can call 101, the 24 hour non-emergency number for the police.

Further information can be found at www.cwmtafsafeguarding.org or you can e-mail cwmtafsafeguarding@rctcbc.gov.uk

This page is left Blank.

APPENDIX 2

CWM TAF SAFEGUARDING ADULTS BOARD

**CWM TAF
SAFEGUARDING ADULTS BOARD**

ANNUAL REPORT 2014/15

INTRODUCTION

The Cwm Taf Safeguarding Adults Board (CTSAB) is the multi-agency partnership which has responsibility for safeguarding adults at risk in Rhondda Cynon Taf and Merthyr Tydfil. The key objectives of the CTSAB, as defined by the Social Services and Wellbeing Act 2014 (SS&WB Act 2014), are:

1. to protect adults within Rhondda Cynon Taf and Merthyr Tydfil who:
 - a. have needs for care and support (whether or not a local authority is meeting any of those needs), and
 - b. are experiencing, or are at risk of, abuse and neglect, and
2. to prevent those adults within Rhondda Cynon Taf and Merthyr Tydfil mentioned in 1(a) above from becoming at risk of abuse or neglect.

This report summarises the work undertaken by the CTASB to achieve it's outcomes during 2014/15.

The Vision of the CTSAB is to ensure that adults in Merthyr Tydfil and Rhondda Cynon Taf, over the age of 18, are protected from abuse and neglect, their welfare safeguarded and promoted and they live in an environment that promotes their wellbeing taking into account mental capacity and consent.

Protection of adults at risk encompasses the following categories of abuse. This list is non-exhaustive and includes:

- **Physical Abuse** – hitting, slapping, over or misuse of medication, undue restraint, or inappropriate sanctions;
- **Sexual Abuse** – rape and sexual assault or sexual acts to which the vulnerable adult has not or could not consent and / or was pressured into consenting;
- **Psychological Abuse** – threats of harm or abandonment, humiliation, verbal or racial abuse, isolation or withdrawal from services or supportive networks;
- **Neglect** – failure to access medical care or services, negligence in the face of risk taking, failure to give prescribed medication, failure to assist in personal hygiene or the provision of food, shelter, clothing;
- **Financial Abuse** – in relation to people who may have needs for care and support -
 - Unexpected change to their will;
 - Sudden sale or transfer of the home;
 - Unusual activity in a bank account;
 - Sudden inclusion of additional names on a bank account;
 - Signature does not resemble the person's normal signature;
 - Reluctance or anxiety by the person when discussing their financial affairs;
 - Giving a substantial gift to a carer or third party;

- A sudden interest by a relative or other third party in the welfare of the person;
- Bills remaining unpaid;
- Complaints that personal property is missing;
- A decline in personal appearance that may indicate that diet and personal requirements are being ignored;
- Deliberate isolation from friends and family giving another person total control over their decision-making.

Deprivation of Liberty is a term used in the European Convention on Human Rights about circumstances when a person's freedom is taken away. Its meaning in practice is being defined through case law. The Mental Capacity Act 2005 covering England and Wales provides the statutory framework for acting and making decisions on behalf of people who lack the capacity to make those decisions for themselves.

In some cases, people lack the capacity to consent to particular treatment or care that is recognised by others as being in their best interests, or which will protect them from harm. Where this care involves depriving vulnerable people of their liberty extra safeguards have been introduced, in law, to protect their rights and ensure that the care or treatment they receive is in their best interests.

The arrangements for the Deprivation of Liberty safeguards in Cwm Taf are the responsibility of the CTSAB.

THE STRUCTURE OF THE CWM TAF SAFEGUARDING ADULTS BOARD

The CTSAB is chaired jointly by the Director of Community and Children's Services (RCT County Borough Council) and the Chief Officer for Social Services (Merthyr Tydfil County Borough Council).

The membership of the Board complies with the guidance issued under Part 7 (Section 134(2)) of the SS&WB Act 2014 and is as follows:

CWM TAF SAFEGUARDING ADULTS BOARD MEMBERSHIP	
Director of Community & Children's Services (RCT) - Co-Chair	Rhondda Cynon Taf CBC The Pavilions, Clydach Vale, Rhondda Cynon Taf, CF40 2XX
Chief Officer for Social Services (Merthyr Tydfil) - Co-Chair	Merthyr Tydfil CBC Civic Centre, Castle Street, Merthyr Tydfil, CF47 9AN
Executive Nurse Director Cwm Taf University Health Board	Cwm Taf University Health Board LHB Headquarters, Ynysmeurig House, Abercynon, CF45 4SN
Chief Superintendent	South Wales Police

CWM TAF SAFEGUARDING ADULTS BOARD MEMBERSHIP	
	Pontypridd Police Station, Berw Road, Pontypridd, CF37 2TR
Assistant Chief Executive	National Probation Service 4 -9 Broadway Pontypridd, CF37 1BA
Assistant Chief Executive	South Wales 2, Wales Community Rehabilitation Company Bridgend Probation Office, Tremains House, Tremains Road, Bridgend, CF31 1TZ
Chief Officer	Voluntary Action Merthyr Tydfil (VAMT), Voluntary Action Centre, 88-90 High Street, Pontmorlais, Merthyr Tydfil, CF47 8UH
CTSB Business Manager	Rhondda Cynon Taf CBC Ty Catrin, Maritime Industrial Estate Maesycloed Pontypridd, CF37 1NY
Head of Safeguarding, Adults and Children	Cwm Tâf University Health Board LHB Headquarters, Ynysmeurig House Abercynon, CF45 4SN
Service Director Commissioning, Business & Housing Systems	Rhondda Cynon Taf CBC Ty Elai, Dinas Isaf East, Williamstown Tonypany, CF40 1NY
Safeguarding Manager	Merthyr Tydfil CBC Unit 5, Pentrebach Merthyr Tydfil, CF48 4TQ
Housing & Community Safety Manager	Merthyr Tydfil CBC Civic Centre, Castle Street, Merthyr Tydfil, CF47 9AN
Head Of Community Housing Services	Rhondda Cynon Taf CBC Ty Elai, Dinas Isaf East, Williamstown Tonypany, CF40 1NY
Adult Safeguarding Service Manager	Rhondda Cynon Taf CBC Ty Elai Dinas Isaf East, Williamstown Tonypany, CF40 1NY

The CTSAB has developed a structure to support the delivery of its objectives and carry out its functions effectively. The work programme for the CTSAB, as set out in its Annual Plan, is delivered by a number of Sub-groups (see chart below) all which report to the Main Board via the Operational Group. This enables the Board to focus on its overall responsibility of setting the strategic direction for all partner agencies and challenging them on the effectiveness of safeguarding measures.

The responsibilities of each of the Sub Groups are as follows:

Operational Group - key to the overall effectiveness of the CTSAB. In delivering the Business Plan, it will ensure that the priorities of the Board and the work of the Sub Groups are taken forward. It will also ensure that information about measuring outcomes and the effectiveness of the SAB is produced.

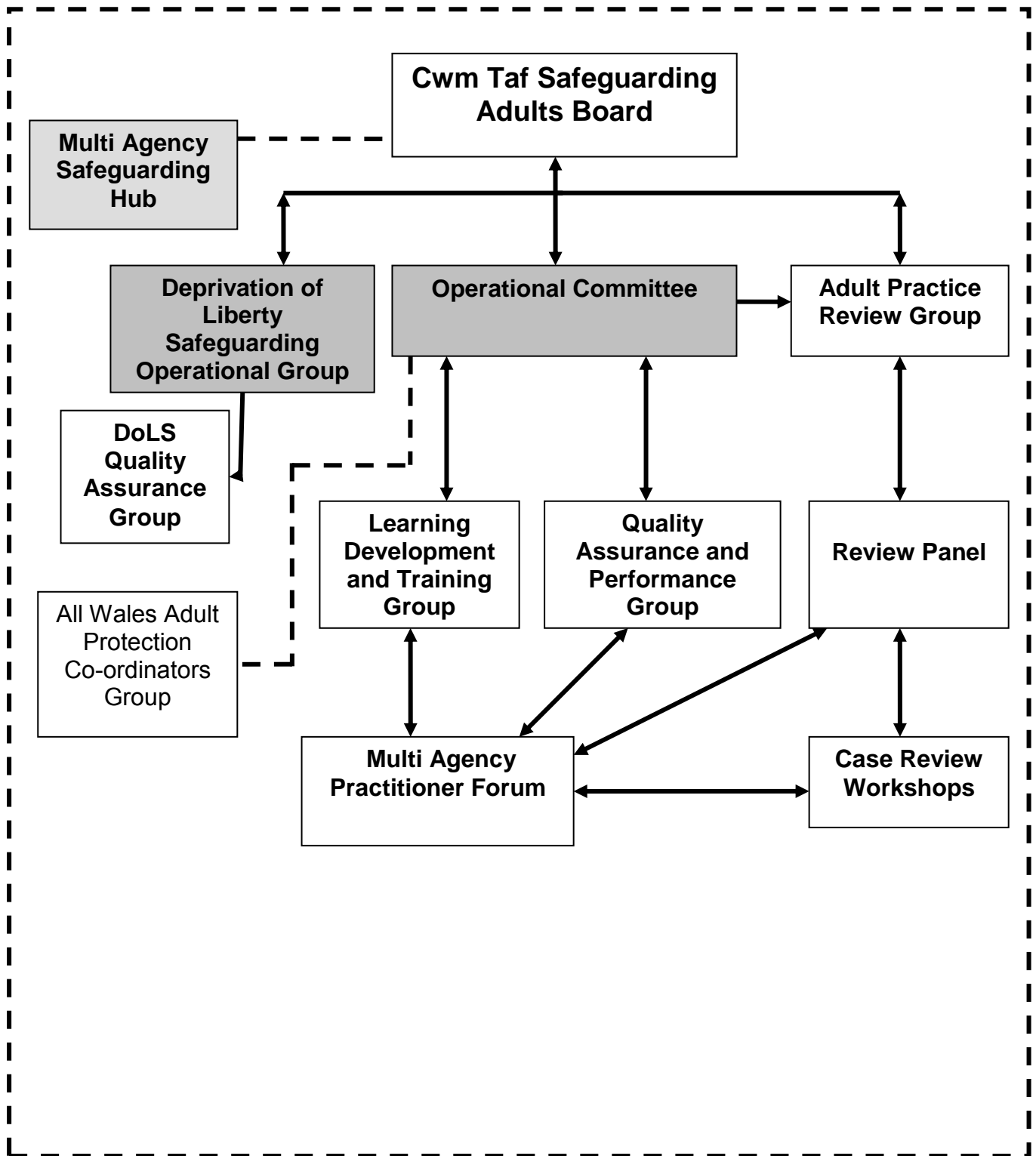
Deprivation of Liberty Safeguarding Sub Group - ensures that the objectives for DoLS contained in the SAB work plan are delivered.

Quality Assurance and Procedures Sub Group - monitors the effectiveness of local individuals' and organisations' practice within the Adult at Risk process.

Adult Practice Review Group - ensures that the CTSAB discharges its functions in relation to Adult Practice Reviews and promotes a positive culture of multi-agency learning and more effective sharing of that learning.

Learning Development and Training Sub Group - ensures that there is a clear process for managing the identification of training needs; feeding these into the planning and commissioning of training; and the evaluation of multi agency adult safeguarding training to ensure it is consistently meeting local need.

The partner agencies work together to achieve the vision and objectives of the CTSAB. The CTSAB is not currently funded and the work of the Board and its Sub Groups is carried out on an in-kind basis. Work is underway to develop a strategic safeguarding business unit that will support both the Children's and Adults Safeguarding Boards, utilising the funding formula as set out in the SS&WB Act 2014.



PERFORMANCE IN 2014/15

In our Business Plan 2012-2014 we identified the following **Strategic Outcomes** for the CTSAB:

1. Adults are protected and kept safe from significant harm
2. All SAB partners are informed and held to account for their safeguarding responsibilities.
3. Adults at risk of significant harm are consulted, listened to and their views and wishes guide how they are supported
4. All members of the community are informed of the role they can play to safeguard adults at risk of significant harm.

PROGRESS AGAINST STRATEGIC OUTCOMES

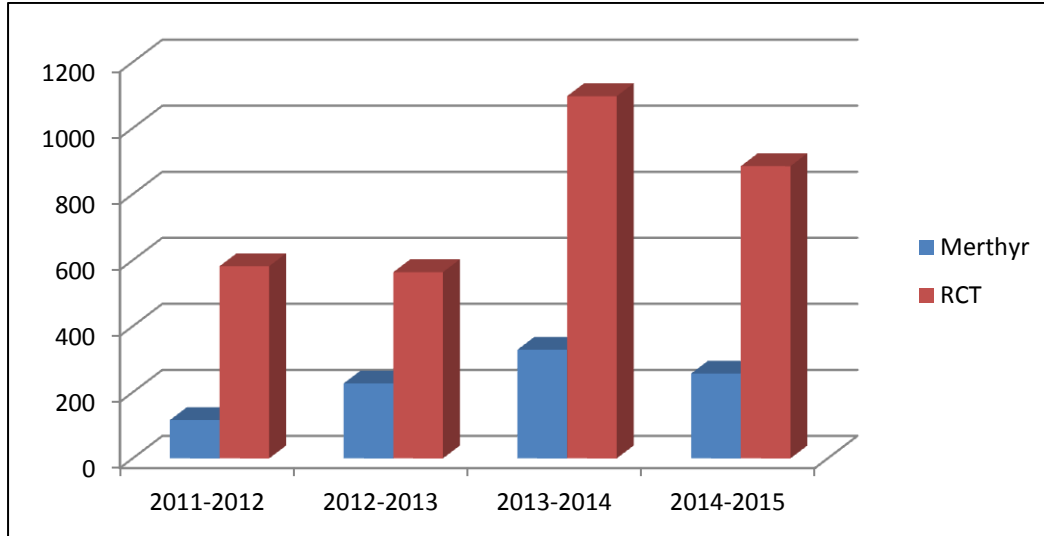
The Board has developed a work programme that sets out the actions to achieve its Strategic Outcomes.

During 2014/15 work was undertaken to establish the structure of the Board and its Sub Groups. A framework is now in place to further develop this structure and to set the strategic direction of the Board.

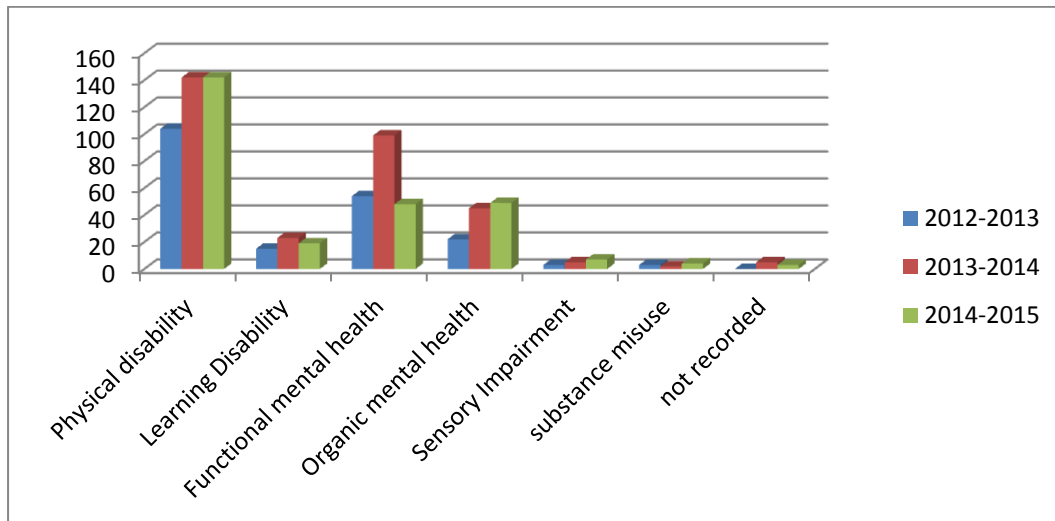
The table below provides a summary of all **referrals and closed cases** during 2014/15.

	Merthyr Tydfil	RCT	TOTAL
Total Referrals	254	885	1139
Meeting threshold	118	294	412
Not meeting threshold	121	567	688
Inappropriate cases	15	24	39
Closed cases	73	200	273

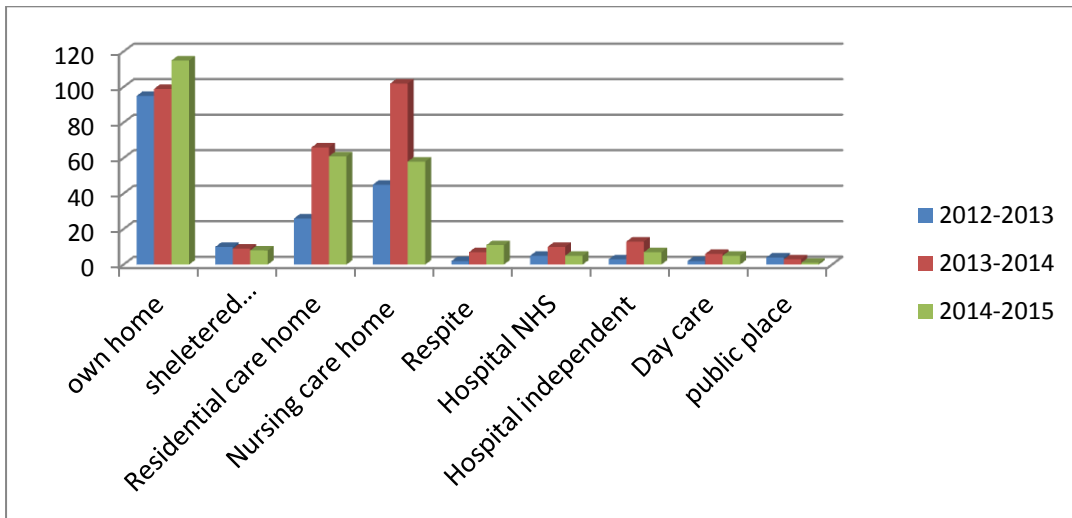
The **number of referrals** between 2012/13 and 2013/14 saw a sharp rise in both Merthyr and RCT but this figure reduced in 2014/15. This is largely due to a new structure for the delivery of adult protection services being put in place which has now been embedded. It is anticipated that the number of referrals that do not meet the threshold will reduce over time as agencies are made more aware of the criteria.



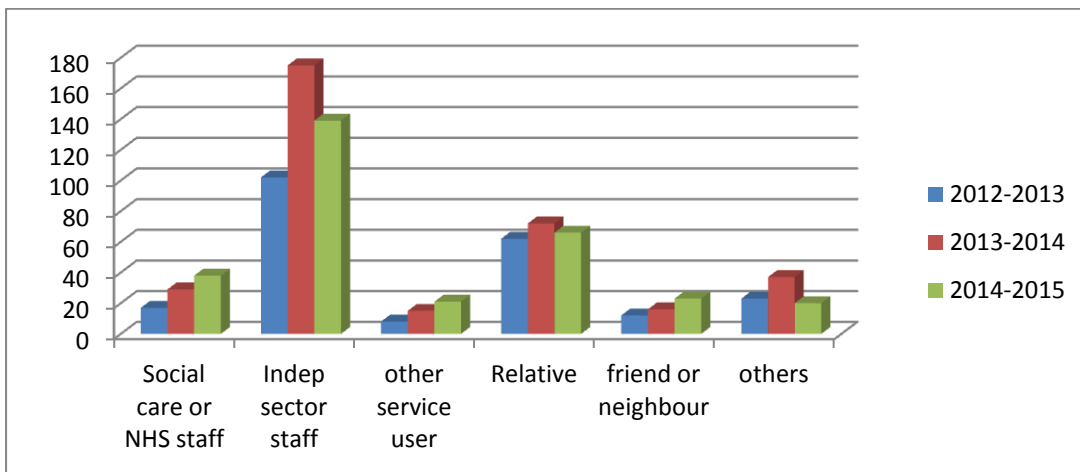
Physical disability has remained the main **category of vulnerability** for referrals, followed by functional and organic mental health. There is a need to improve awareness amongst practitioners so that categorisation is more precise in relation, for example, including dementia in organic mental health as opposed to physical disability.



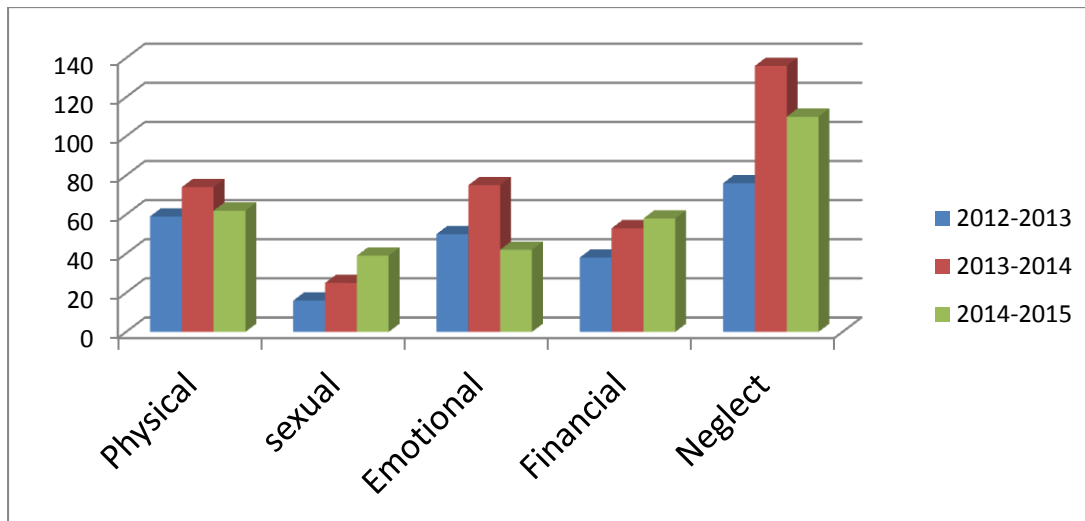
The **location of the alleged abuse** has a fairly even spread across the residential and community sectors. However the reporting of alleged abuse in the community is increasing across Cwm Taf.



The Independent Sector remains the highest **alleged perpetrator** across Cwm Taf.



Neglect was the most common **type of abuse** for 2014-2015, although sexual and financial abuse have both increased as awareness raising becomes more improved. In some cases, more than one type of abuse will be identified.



There were three cases considered by the **Safeguarding Board Adult Practice Review Group** during the year, none of which have proceeded to a full review.

- Case 1 is still subject to an ongoing criminal investigation and the timing of any Adult Practice Review is considered at each meeting.
- Case 2 has involved the completion of an Investigation Report & Action Plan produced by the Health Board and the Group is reviewing the implementation of the actions.
- Case 3 was a case relating to another local authority which the Board had an interest in. However it was agreed that this did not meet the criteria to proceed any further.

Key achievements in supporting the objectives of the Board have included:

- The development of a **Multi-Agency Safeguarding Hub (MASH)** which has been operational since January 2015. This is where the key agencies responsible for safeguarding are based and where they consider concerns and decide what needs to be done. Before the MASH, this work was done by each agency individually and shared where necessary. Now all of these people are based in the same place and can share information straight away. This means that we are able to improve our ability to co-ordinate, protect and support vulnerable people who are at risk.
- The development of a new **Cwm Taf Safeguarding website** which will be formally launched in November 2015.

- We have **enhanced Designated Lead Manager (DLM) effectiveness** in engaging with adults at risk by improving the rate of referrals to the Independent Mental Capacity Advocate service (IMCA). A new provider has been in place since October 2014 and during the period October to December 2014, the IMCA received a total of 13 referrals from RCT and Merthyr Tydfil.
- We have increased the capacity across Cwm Taf to deal with the increased number of **DoLS referrals** since legislative changes came in to force in March 2014.

9

CO-OPERATION AND COLLABORATION

The CTSAB continues to work in partnership with the community, statutory partners, voluntary partners, independent sector, providers and key strategic partnerships to achieve its vision and objectives.

The CTSAB has contributed to elements of the work of the Local Service Board by reporting on safeguarding activity. It has also contributed to the development and delivery of the Single Integrated Plans in both RCT and Merthyr Tydfil by establishing a Strategic Group that has identified joint priorities for action to manage the arrangements for Domestic Violence and Sexual Violence.

By collaborating with other partnerships the Board ensures that there is clarity on what elements of safeguarding adults at risk of significant harm the CTSAB is accountable for and which elements the other strategic partnerships are accountable for and monitoring and reviewing their effectiveness.

LEARNING DEVELOPMENT AND TRAINING

The Learning, Development and Training Sub Group was redeveloped during 2014/15 and will provide a more structured approach to improving multi-agency safeguarding practice across Cwm Taf.

Safeguarding training is a key component of the Annual Social Care Workforce Development Programme. A range of safeguarding related training was delivered during the period April – March 2015. Examples of training delivered include:

- Levels 2 & 3 Vulnerable Adult and Safeguarding Children training.
- Multi Agency Risk Assessment (MARAC) Conference
- Multi Agency Safeguarding Hub Awareness Raising
- Designated Lead Manager Training

Further details in relation to the Vulnerable Adults training is provided in the table below:

PERFORMANCE INDICATOR	Quarter 1		Quarter 2		Quarter 3		Quarter 4	
	MT	RCT	MT	RCT	MT	RCT	MT	RCT
No. L2 Vulnerable Adults Training Courses held (multi-agency)	1	1	2	4	1	2	1	5
No. Attending L2 Vulnerable Adults Training (multi-agency)	7/8 (88%)	8/12 (67%)	44/52 (85%)	54/64 (84%)	15/22 (68%)	35/36 (97%)	14/21 (67%)	57/75 (76%)
No. L3 Vulnerable Adults Training Courses held (multi-agency)	1	0	0	1	1	1	0	2
No. Attending L3 Vulnerable Adults Training (multi-agency)	16/20 (80%)	na	Na	7/14 (50%)	13/17 (76%)	12/16 (75%)	na	28/32 (88%)

10

All courses are evaluated by attendees to establish whether they felt the course objectives were met, quality of delivery and its usefulness in relation to their role. This information is collated, analysed and used to inform planning of future training. This information forms part of the SCWDP Annual Report, which will be available in August 2015.

KEY IMPROVEMENTS FOR 2015/16

To further develop the structure of the CTSAB and to meet the requirements of the new Social Services and Wellbeing Act 2014 the Board will set some key priorities for 2015/16 including:

- Encourage more adults who are at risk of abuse to take part in the meetings that talk about how they may be protected.
- Continue to provide relevant training and support to colleagues in other areas of the Council to ensure that they fully understand their role in safeguarding vulnerable people in our community and share their concerns.
- Review how well the Multi-Agency Safeguarding Hub is performing in relation to safeguarding adults at risk.
- Continue to increase the capacity of Adult Services to deal with DoLS referrals in a timely manner.
- Launch the new CTSAB website and review its effectiveness in raising awareness.
- Develop a more robust business support structure to enable the work of the Board and its Sub Groups to be carried out effectively based on agreed targets and outcomes.
- Deliver procedures to implement the new Adult Protection and Support orders under Section 127 of the Social Services and Wellbeing Act.

- Carry out a self assessment across partner agencies and partnerships to demonstrate to the Board how they discharge their safeguarding responsibilities.
- Formalise the relationship between the CTSAB and the new National Independent Safeguarding Board.

This page is left Blank.