

RHONDDA CYNON TAF COUNTY BOROUGH COUNCIL

MUNICIPAL YEAR 2018/19

CHILDREN & YOUNG PEOPLE SCRUTINY COMMITTEE

9th January 2019

Agenda Item No:
Draft Accommodation and Support Strategy for Young people 16+ years of age Leaving Care

Author: Ann Batley, Service Director Children Services, Cath Tyler, Service Development Manager, Tel 01443 744016

PURPOSE OF THE REPORT

- 1.1 The purpose of the report is to give scrutiny the opportunity to consider and endorse the draft Accommodation and Support Strategy for Young People 16+ years of age Leaving Care.

2. RECOMMENDATIONS

- 2.1 It is recommended that scrutiny considers and endorse the draft Accommodation and Support Strategy for Young People 16+ years of age Leaving Care.

- 2.2 Agree the outlined next steps.

3. REASONS FOR RECOMMENDATIONS

- 3.1 The reasons for the recommendations are so that scrutiny can:

- Acknowledge the information contained within this report.
- Scrutinise and comment on the information provided.

4. BACKGROUND

Children and young people looked after by the local authority rather than their parents are amongst the most vulnerable groups in our society. As corporate parents, it is our responsibility to keep them safe, make sure their experiences in care are positive and provide suitable accommodation and support when they eventually move on from care.

Finding suitable accommodation and providing the required supports has been a challenge with the demands outweighing the availability. The draft strategy outlines how Rhondda Cynon Taff County Borough Council will in the future approach supporting young people 16+ years of age who will leave care and need accommodation and support.

It sets out our future vision and priorities.

5. NEXT STEPS:

The consultation on the draft strategy is still in the process of being completed. When consultation on the draft strategy has been finalised the key agreed actions in Section 5 will be developed into a plan with set timescales and targets. The action/implementation plan will be developed by the 31st March 2019.

6 EQUALITY AND DIVERSITY IMPLICATIONS

- 6.1 A Equality and Assessment Impact Assessment is being undertaken as part of the development and engagement of the strategy.

7. CONSULTATION

- 7.1 This strategy to be before Scrutiny has part of the consultation process.

8. FINANCIAL IMPLICATION(S)

- 8.1 There are no direct financial implications aligned to this report for the council.

9. LEGAL IMPLICATIONS OR LEGISLATION CONSIDERED

- 9.1 The legal requirements for children looked after are set down within Social Services and Wellbeing Wales Act (2014)

10. LINKS TO THE COUNCILS CORPORATE PLAN / OTHER CORPORATE PRIORITIES/ SIP

- 10.1 The appropriate placement of children looked after will make a positive contribution towards the Council's Corporate Plan Vision of '*a County Borough that has high aspirations, is confident and promotes opportunity for all*'; as it will deliver against the specific priorities of '*People - Promoting independence and positive lives for everyone* and '*Place - Creating neighbourhoods where people are proud to live and work*'.
- 10.2 It will also help the Council to meet three of the seven wellbeing goals that The Well Being of Future Generations (Wales) Act 2015' puts in place as follows:
1. A more equal Wales
 2. A healthier Wales
 3. A Wales of cohesive communities

11. CONCLUSION

The reasons why children become looked after are complex and when they enter the care system they often have a wide range of problems including complex and cumulative vulnerabilities. These issues are not always resolved and are still prevalent when they leave care. To ensure we are able to meet the needs of these care experienced young people we need a variety of available accommodation and supports so that we can address these needs and achieve the best possible outcomes for the individual young person to live successfully in their communities



STRONG HERITAGE | STRONG FUTURE
RHONDDA CYNON TAF
TREFTADAETH GADARN | DYFODOL SICR

Accommodation and Support Strategy for Young People 16+ Years of Age Leaving Care.

Contents

Section 1 Background and Context

- Introduction
- Legislation/ Policy context
- Priorities and desired outcome

Section 2 Evidence

- Children Looked After population data and trends
- Placement type
- Leaving care data
- What have we learnt?

Section 3 Current Programmes and Provision in RCT

- Supporting People
- 16+ Teams Direct Service/Programme Provision

Section 4 Continuum of Support Framework

- Mapping services against the Barnardo's Care Leavers Accommodation and Support Framework
- Gap analysis

Section 5 Next Steps

- Key objectives
- Key actions for implementation

Section 1

1. Introduction

The strategy outlines Rhondda Cynon Taf County Borough Council's Children's Services Group's approach to supporting young people 16+ years of age who are leaving care. It has been developed within the current national and local legislative and policy context as noted below. It is also informed by feedback from care leavers on both a national and local level.

2. Legislation and Policy Context

- Social Services and Well-being (Wales) Act 2014
- The Housing (Wales) Act 2014
- Children's Commissioner for Wales; Hidden Ambitions Reports 2017 & 2018.
- Welsh Government's Preventing Homelessness and Promoting Independence: A Positive Pathway to Adulthood.
- RCT's Homelessness Strategy (currently in draft format).

The Social Services and Well-Being (Wales) Act 2014 introduced changes relating to entitlements for young people leaving care and other groups of vulnerable young people, as well as a general duty around the local provision of information, advice and assistance for both children and adults.

3. Priorities

Vision

Cwm Taf shared regional statement of intent for supporting children young people and families:

Our shared vision is that children, young people and families in Cwm Taf live safe, healthy and fulfilled lives and that they can achieve their full potential by building resilient communities.

RCT Children's Services Delivery Plan 2018/2019

Priority 3

Ensure that children who cannot live with their parents live in suitable accommodation in RCT

The aim of Rhondda Cynon Taf Children's Services, Children Looked After Quality Assurance Panel is to ensure that children looked after and care leavers in RCT receive good quality placements that support them to live safe, healthy and fulfilled lives.

One of the Panel's key objectives is to identify a commissioning mix and range of placements that support children looked after and care leavers to achieve positive outcomes. To achieve this, a range of suitable accommodation needs to be provided that supports care leavers to develop the skills that enable them to move to full independence.

Section 2

Children Looked After Data

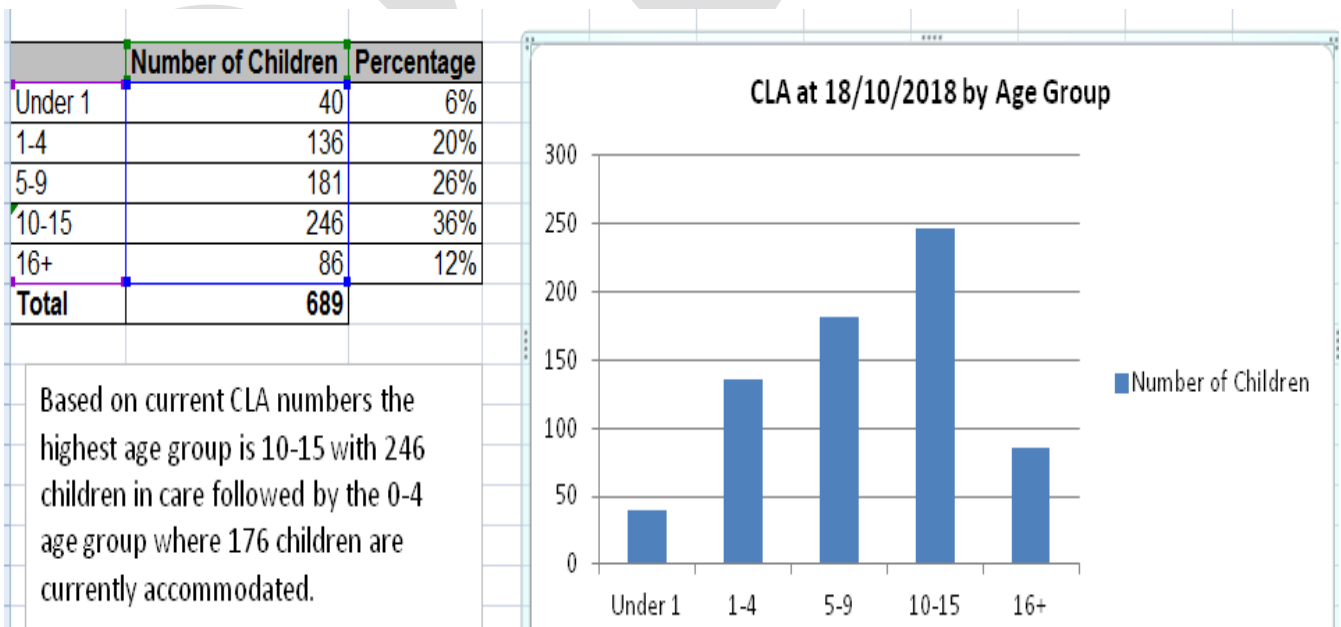
What do we know?

The children looked after population within RCT has increased over the past five years from 621 in 2013 to 676 at the end of 2017-2018 financial year, with 701 children looked after on the 11th September 2018.

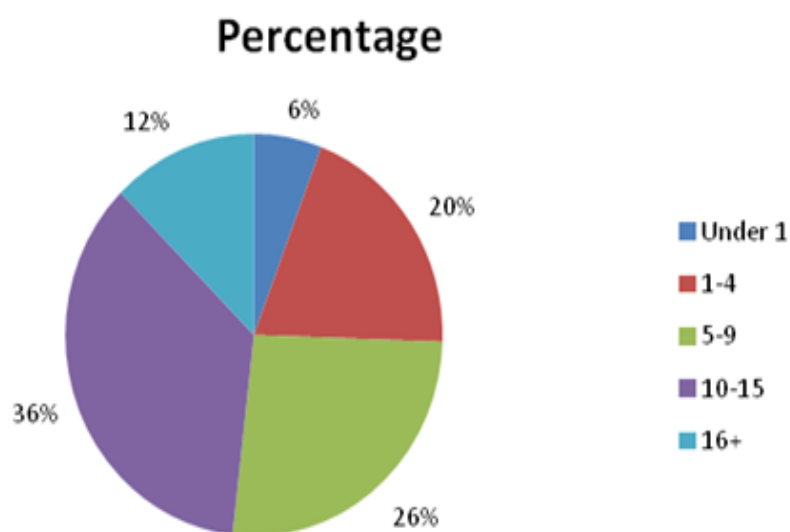
Over the years however the numbers and profile of the children and young people becoming looked after has changed and numbers have fluctuated with 2017-2018 seeing an overall decrease in admissions of 42% compared with the same period in 2016-2017. The profile of overall admissions in 2017-2018 also showed that of those children becoming looked after:

- 34% of children where under 1 years old
- 55% of children where under 4 years old
- 7% where 16+ years of age.

Children Looked After Population by Age Group at the 18/10/2018



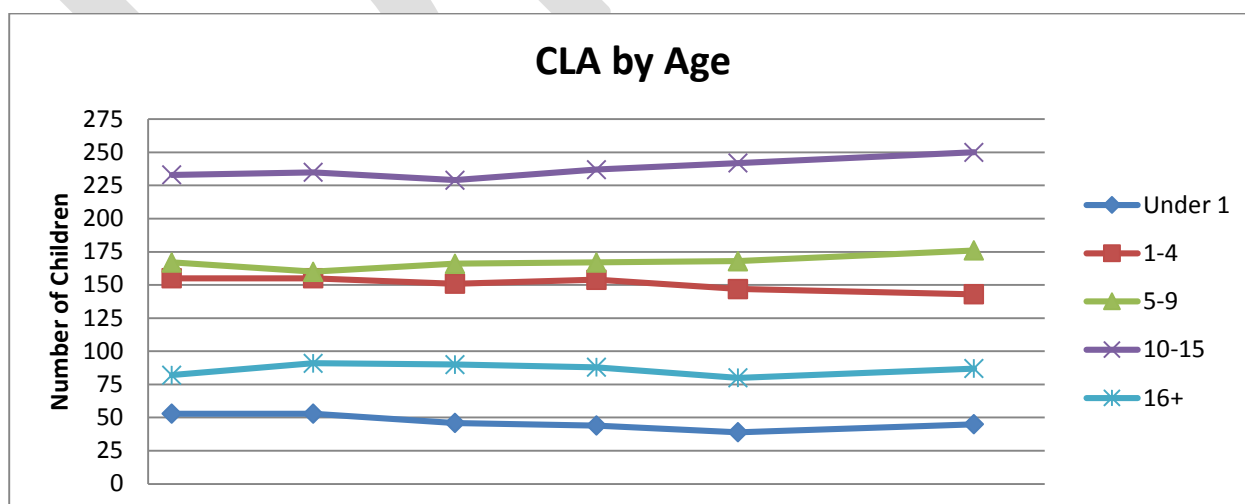
Children Looked After Population by Age Group at the 18/10/2018



Children Looked After Age Group Trend Data 18/9/2018

	31/03/17	%	30/06/17	%	30/09/17	%	31/12/17	%	31/03/18	%	16/08/18	%
Under 1	53	7.7%	53	7.6%	46	6.7%	44	6.4%	39	5.8%	45	6.4%
1-4	155	22.5%	155	22.3%	151	22.1%	154	22.3%	147	21.7%	143	20.4%
5-9	167	24.2%	160	23.1%	166	24.3%	167	24.2%	168	24.9%	176	25.1%
10-15	233	33.8%	235	33.9%	229	33.6%	237	34.3%	242	35.8%	250	35.7%
16+	82	11.9%	91	13.1%	90	13.2%	88	12.8%	80	11.8%	87	12.4%
Total	690		694		682		690		676		701	

The Children Looked After population has remained relatively stable over the last 18 months.



Since March 2017, there has been a small and steady increase in the number of children 16+ years of age who are looked after. With the number of children between 10-15 years of age continuing to be the largest cohort of children looked after however, there is likely to be a continuing upward trend at 16+ years of age.

The table below provides a summary of the number of children currently looked after between the ages 10 and 15 years and their current placement type.

Children Looked After 10-15 years 18/12/2018							
Placement Type	Age						
	10	11	12	13	14	15	Total
Residential Care RCT		1	1	2	1	1	6
Residential Care Ind Sector		1	2	9	6	7	25
In Foster Care RCT	11	7	9	8	9	10	54
In Foster Care Ind Sector	20	14	18	12	11	19	94
RCT Relative Foster Carers	9	10	10	7	9	9	54
Education				1			1
Placed With Parents	1	1	3	2	3		10
Total	41	34	43	41	39	46	244

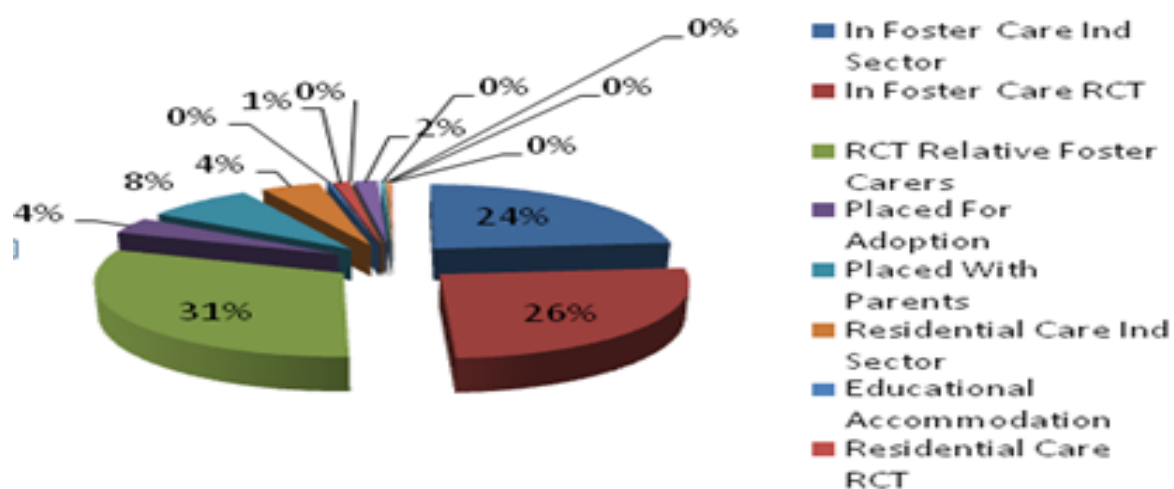
You will note that the number of children turning 16 years of age over the next six years is consistent, ranging from a minimum of 34 to a maximum of 43. In general the young people have been looked after for a significant period of time, with the average length of placement being 1357 days. The placements are therefore established and stable.

Placement Type

Children are supported in a range of placements as noted below:

Placement Type	17/04/2017		17/04/2018		18/10/2018	
In Foster Care Ind Sector	182	27%	166	25%	163	24%
In Foster Care RCT	193	28%	177	26%	177	26%
RCT Relative Foster Carers	175	26%	194	29%	212	31%
Placed For Adoption	23	3%	31	5%	25	4%
Placed With Parents	52	8%	51	8%	55	8%
Residential Care Ind Sector	31	5%	30	4%	30	4%
Educational Accommodation	1	0.1%	3	0.4%	2	0.3%
Residential Care RCT	8	1%	9	1%	8	1%
Independent Living	5	0.7%	4	0.6%	0	0%
Supported Lodgings	7	1%	3	0.4%	12	1.7%
Bed & Breakfast	0	0%	0	0.0%	2	0.3%
Mother & Baby	3	0.4%	6	0.9%	2	0.3%
YOI	2	0.3%	1	0.1%	1	0.1%
Total	682		675		689	

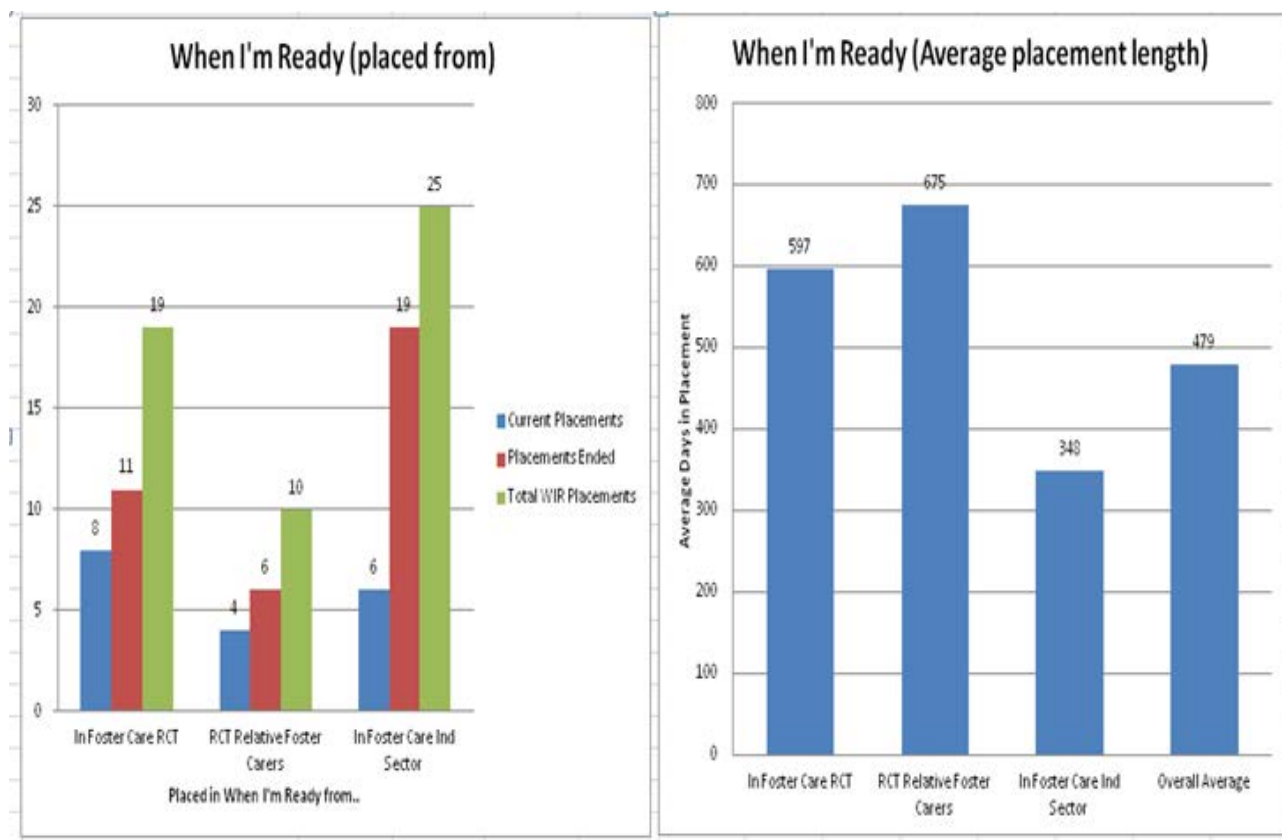
CLA at 18/10/2018



Children Looked After 16/17 Years 18/12/2018

Placement Type	Age		Total
	16	17	
Residential Care RCT	2		2
Residential Care Ind Sector	3	5	8
In Foster Care RCT	12	8	20
In Foster Care Ind Sector	19	13	32
RCT Relative Foster Carers	5	7	12
Other Lodgings	4	9	13
Placed With Parents	4	1	5
Total	49	43	92

When I'm Ready



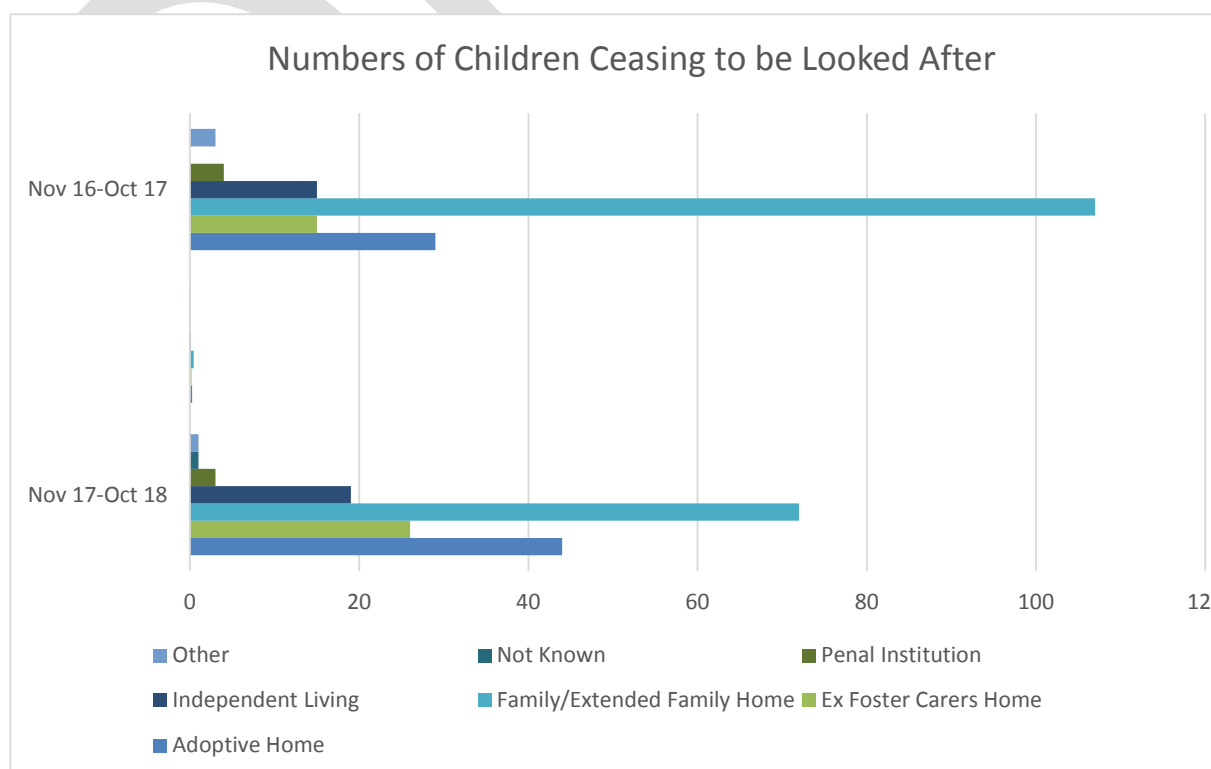
A young Person is entitled (if the foster carer agrees) to spend 3 years in a When I'm Ready (WIR) placement (1,095 days). There have been 54 Young Persons placed in When I'm Ready placements since the scheme started in 2015. 46% (25) of these young people remained with their former Independent Foster Carers, 35% (19) with RCT Foster Carers and 19% (10) with Relative Carers.

The average length of time of a WIR placement is 486 days. There is a significant difference in the length of placement depending on the type of placement converted to WIR. Former Relative Carer placements last on average 735 days, former RCT Foster Carers 622 days and former Independent Carers 317 days. There are numerous reasons why a WIR placement may end e.g. the young person feels ready to move to their own tenancy and full independence. But the data also suggests there is a direct correlation between the level of remuneration received and placement length. Carers receive a reduction in payment rates in the September following the young persons 18th birthday (if they have remained in full time education). Relative carers do not see any difference in remuneration levels by converting to WIR and Independent carers see the biggest reduction.

Leaving Care Data

All Children who ceased being looked after between 01/11/2016 and 31/10/2018 by the type of accommodation

	Nov 16 - Oct 17		Nov 17 - Oct 18	
	Total	%	Total	%
Adoptive Home	29	16.76%	44	26.51%
Ex Foster Carers Home	15	8.67%	26	15.66%
Family/Extended Family Home	107	61.85%	72	43.37%
Independent Living	15	8.67%	19	11.45%
Penal Institution	4	2.31%	3	1.81%
Not Known	0	0.00%	1	0.60%
Other	3	1.73%	1	0.60%
Ceased LA per Year:	173		166	



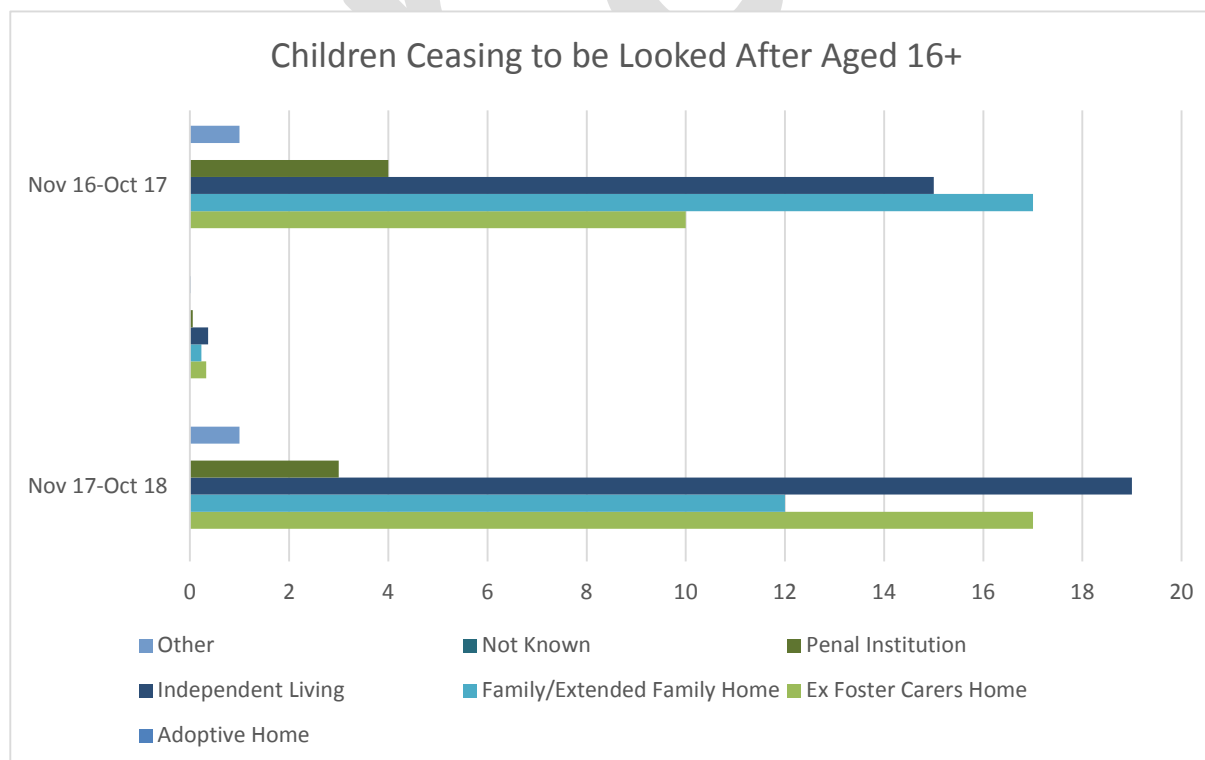
Summary of Children Leaving Care Aged 16+ 01/11/2016 and 31/10/2018 by the type of accommodation

Children aged 16+

	Nov 16 - Oct 17		Nov 17 - Oct 18	
	Total	%	Total	%
Adoptive Home	0	0.00%	0	0.00%
Ex Foster Carers Home	10	21.28%	17	32.69%
Family/Extended Family Home	17	36.17%	12	23.08%
Independent Living	15	31.91%	19	36.54%
Penal Institution	4	8.57%	3	5.77%
Not Known	0	0.00%	0	0.00%
Other	1	2.13%	1	1.92%

Ceased LA per Year: 47

52



What have we learnt?

- The number of children 16+ years of age requiring support will continue to rise at a steady rate over the next few years.
- The nature of the young person's placement whilst looked after i.e. relative foster care, mainstream foster care or residential accommodation will have a direct impact on the type of accommodation/ support provided on leaving care.
- As a guide, it would appear that a third of children leaving care at 16+ years remain with their ex foster carers (WIR), a third return to family/friends and a third move into independent living.
- There has been an increase in the number of care leavers remaining with foster carers post 18 years as part of the When I'm Ready programme or in a Supported Lodging arrangement. Data indicates that this trend is likely to continue.

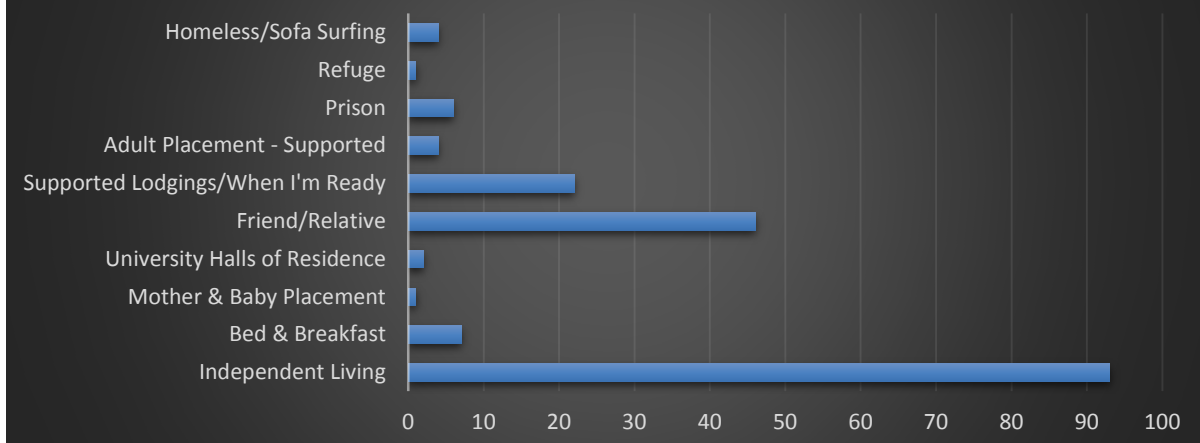
	Nov 16 - Oct 17		Nov 17 - Oct 18	
	Total	%	Total	%
	10	21.28%	17	32.69%
	15	31.91%	19	36.54%

- As previously noted there is a significant difference in the length WIR placement depending on the type of placement converted.
- A large cohort of young people 10 to 15 years of age is currently looked after. Further detailed analysis of the permanency plans for this group of children is required to enable improved planning.

Care Leavers (18 to 25 years) Accommodation Status known to the 16+ Teams

Accommodation Type	Number	
Independent Living	93	50.0%
Bed & Breakfast	7	3.8%
Mother & Baby Placement	1	0.5%
University Halls of Residence	2	1.1%
Friend/Relative	46	24.7%
Supported Lodgings/When I'm Ready	22	11.8%
Adult Placement - Supported	4	2.2%
Prison	6	3.2%
Refuge	1	0.5%
Homeless/Sofa Surfing	4	2.2%
	186	

Care Leavers - Accommodation Status



Reasons given for care leavers experiencing homelessness during 2017/2018

Age	LAC End Date	Homeless in the last Year Y/N	Reason For Homelessness If Yes	Current Housing Situation if Yes
21	20/12/2014	Y	Evicted from supported lodgings - theft	Own tenancy
17	25/11/2016	Y	Family breakdown	Living with Aunt
18	15/08/2016	Y	Substance misuse/chaotic lifestyle - In B and B	B & B
19	08/04/2016	Y	Abandoned tenancy - In B and B	B & B
18	08/12/2015	Y	Failed tenancy	In emergency accommodation
21	18/11/2014	Y	Home conditions poor and moved into emergency accommodation	In emergency accommodation
21	04/12/2014	Y	Went to prison	Prison
22	31/01/2014	Y	Failed tenancy	In own tenancy - supported by St David's Day
18	11/05/2017	Y	Failed tenancy	Living with extended family
19	01/09/2016	Y	Unsuitable supported accommodation	Moved into emergency accommodation
20	21/10/2015	Y	In prison	Prison
19	04/09/2016	Y	Temporarily living at mothers	

Year End Calculation 2017/18

Number Homeless	12
Previously looked after eligible for care services	137
	8.76%

What have we learnt?

- The majority of care leavers (18 to 25 years) known to the 16+ Teams are living independently (this may include some support elements).
- Nearly 10% of care leavers who receive support from the 16+ Teams experience homelessness during 2017/ 2018.
- There is a need to ensure the consistent capture of data going forward to enable trends to be identified.

Section 3

Current Provision in Rhondda Cynon Taf

There is a range of accommodation available for children looked after and care leavers within RCT, accessing the accommodation however is a complex task that requires young people and practitioners to negotiate their way through different process and pathways depending on the type of accommodation/ support required.

Current pathways to access supported accommodation include:

- Supporting People
- 16+ Teams direct services
- When I'm Ready Panel
- Move On Panel - housing providers only attend focus on risk.
- Adult Placement Scheme Panel
- Transition Panel

There is no longer a joint Transition Panel; Adult Services hold a panel to allocate the referrals from Children's Services each month but we play no part in this other than to receive the decision sheet each month so we know who the allocated social worker is.

RCT have a range of panels whose remits appear to overlap. Individual practitioners appear to have to navigate complex accommodation/ resource pathways.

Supporting People

The Supporting People programme funds, monitors and develops supported housing and housing related support services for vulnerable people from a range of providers. The services are aimed at enabling people who need help to develop independent living skills or maintain independence in the community.

Services focus on preventing or solving problems that might lead to homelessness, residential care, hospital admissions or offending.

Supporting People Panel allocates resources. Service provision for young people 16 to 25 years of age:

Provider	Description of support provided
Action for Children Youth Support Scheme	38 spaces of floating support for young vulnerable people aged 16-24 supporting both single young people and lone parents
Adref's The Grange	Adref have a 10 bed hostel for homeless young people. Each resident has their own room which includes a bathroom and cooking facilities but they will share the communal laundry. Breakfast is also provided.
Hafan Cymru's Bridget Project Shared House	This supported housing project is specifically for young vulnerable people 16-21 years. It is likely that residents will only stay between approximately 6 and 12 months dependent on the individual's needs. This project comprises two shared houses for clients aged 16-21.
Llamau's Ty Rhondda Project, Tonypany	This supported housing project is specifically for young vulnerable people 16-21 years. It is likely that residents will only stay between approximately 6 and 12 months although this will be dependent on the individual's needs.
Llamau's Dunraven Street Project, Tonypany	The Dunraven Street project is a project containing 3 individual 1 bedroom flats for young people 16-24 years of age.
Llamau's Young Persons Floating Support	The scheme is 10 spaces of floating support for young vulnerable people aged 16-24
Hafan Cymru's Vulnerable Family Supported Housing	The Supported Housing scheme is temporary and it is likely that residents will only stay between approximately 6 and 12 months dependent on the individual's needs. The project is for vulnerable families/vulnerable women over 16 years old. The project is made up of 9 family

	units within the communities of Beddau and Pen-y-Graig. The units are mostly houses but some are flats.
Hafan Cymru's Floating Support	The scheme is 16 spaces of floating support for vulnerable women or men 16+ years of age who have experienced domestic abuse
Old Bakery Project	Self contained supported accommodation for 6 young people with high support needs,

16+ Teams Services/Programmes

Programme	Description of the support provided
Supported Lodging Scheme WIR/Supported Lodging Panel	<p>Provide supported accommodation to young people aged 16 to 21 years, by enabling them to access lodgings in approved private households within Rhondda Cynon Taff.</p> <p>The Scheme is aimed largely at young people who have been in the care of the local authority, or are preparing to leave care. Other young people aged 16 and 17 who present as homeless are also provided with services by the scheme.</p> <p>December 2018 16 young people in supported lodging, bid made for additional funding to double the size of the scheme over a period of 3 years.</p>
Training Flats x 2 Team Manager 16+ has overall responsibility for the training flats, whilst a Support Worker in 16+ Teams manages the flats on a day to day basis.	<p>One space per flat, placement one month duration, first week daily contact, 4th week telephone contact.</p> <p>Maximum of 24 placements a year</p> <p>Currently operating at capacity</p>
Morgan Street	<p>Drop-in facility twice weekly East/West, group activities building skills towards independence</p> <p>Going forward young people will be able to book appointments to meet workers. Increased number of group activities to include sexual health, job centre also a mother and baby group.</p>
When I'm Ready	The 'WIR' scheme puts a duty on Local Authorities to support 'eligible' young people to remain with their foster

When I'm Ready/Supported Lodging Panel	<p>carer beyond 18, where the young person has requested this support and where the foster carer agrees.</p> <p>18 Current WIR placements</p>
St David's Day Fund	<p>Housing:</p> <ul style="list-style-type: none"> • Bonds and deposits may be paid, dependent upon current and historical housing and financial circumstances. • First Tenancy Pack
<p>The Positive Pathway Project</p> <p>Need to review how the project is working. Are pathways clear etc?</p>	<p>Provides an advice and support service that enables young people to avoid homelessness and remain or help them return to their home environment. The project is delivered by Llamau and funded by WAG Homelessness Prevention Grant to offer interventions through early targeted help, including helping educate and provide information and advice for young people and their families and other agencies about the realities of youth homelessness / welfare reforms impacts etc</p> <p>The project worker role is based with RCT's Resilient Families Service and offers support to young people and to those families which are specifically at risk of their young people presenting as homeless.</p>

Section 4

Continuum of Support

Consider how we might develop a continuum of accommodation and support for care leavers in RCT.

The framework noted below utilises key elements of the Barnardo's Care Leavers Accommodation and Support Framework as referenced in Children's Commissioner's Hidden Ambitions Report.

Stage 1 Helping young people to gain skills in preparation for independence and building resilience.	
Current Provision	Gaps identified/ Future developments
Foster Carers/Residential staff - skill building	<p>Fostering We encourage all carers to adapt and prepare young people and lots of one to one provided by social workers - no specific guidance/programme at this time. Area that needs to be developed to promote good practice.</p> <p>Residential Residential Service operate an independence programme, further development is required.</p>
Care and Support/ Pathway Planning	Reassessment and Pathway Planning is being undertaken by the 16+ Teams, there is a need however to ensure consistency of approach in the use of the reassessment to inform Care and Support and Pathway Planning ;and also the use of documentation going forward.
The Drop-in (Morgan Street) - focus on learning from peers	<p>The Drop- in provides a range of activities and facilities for Children Looked After 16 + years of age. These include:</p> <ul style="list-style-type: none"> • Accessible 1-1 support when needed from members of the 16+ Teams. • Provision to make (and have assistance with) phone calls to housing, to arrange medical appointments and, make housing benefit/JSA/Universal Credit claims. • Young people are able to cook lunch, and have access to clothes washing facilities. • Emergency payments • Group activities which include building independence skills

	<ul style="list-style-type: none"> • RCT Arts Service holds art, RAP and singing sessions. • Peer mentoring sessions are facilitated in an informal way. • Specific 1-1 sessions, initially looking at self esteem. <p>Development plans</p> <ul style="list-style-type: none"> • Professional input from, Voices from Care and Care 2 Work • Developing coffee mornings to engage hard to reach over 18's.
Training Flats	<p>There is a need to review the operation of the training flats to agree where they are best placed on the continuum of support going forward.</p> <p>At present the training flats are used to as part of an assessment process, rather than as an opportunity to develop independence skills. Further, no formal tool is being used to measure distance of travel by YP e.g. - goals, what the YP wants to actually achieve for the training flat - there is a discussion at the end, but isn't measured.</p>
Get Ready and Move On Scheme (GRAMO) Tenancy building skills.	<p>Get Ready and Move On (GRAMO) has been introduced as part of ensuring individuals are tenancy ready. The programme is delivered through interactive group work or one to one sessions by the GRAMO Co-ordinator at Trivallis (Housing Provider). The sessions are aimed care leavers/young people (aged 16 – 24) preparing to move in to independent living may lack some basic life skills such as money management, accessing support services within the local community and budgeting for housing</p> <ul style="list-style-type: none"> • Course length – 6 weeks (6 Units) • Duration – A total of 12 hours (2 hours per week to cover a unit of learning) • Delivered on a one-to-one basis

Stage 2 Planning accommodation and support options	
Current Provision	Gaps identified/ Future Developments
Supporting People Programme Emergency provision: <ul style="list-style-type: none"> • Adref's the Grange(10 units) • Ty Rhondda (Llamau) (1 bed) Supported Accommodation up to 12 months: <ul style="list-style-type: none"> • Hafan Cymru's Bridget Project Shared House. Pontypridd.(Female) • Hafan Cymru Shared House Penygraig(Male) • Hafan Cymru's Vulnerable Family Supported Housing (RCT) • Llamau's Ty Rhondda • Gwalia Old Bakery Project Step Down Accommodation <ul style="list-style-type: none"> • Llamau's Dunraven Street Project, Tonypany. 	All young persons supported accommodation will be able to offer a 24/7 provision by the end of 2018.
When I'm Ready Scheme	Growth in the scheme is likely to be required going forward. Review Panel Process
Supported Lodging Scheme	Growth in the scheme is likely to be required going forward. Review Panel Process
Shared Lives Adult Service Provision - delivered by Ategi	Foster Carers transfer to become adult family placements or alternatively new placements are recruited
Specialist Adult Accommodation for disabled children at transition	
YOS	Young people aged 16/17 assessed as vulnerable <i>can</i> be placed in secure children's homes (SCHs) or secure training centres (STC's). All other young people aged 16/17 years are placed in Young Offender Institutions (YOI's). Based upon the assessment of the YOS and availability, this decision is undertaken by the

	<p>Youth Custody Service (YCS). YOS and partners ensure that resettlement provision is in place prior to release from secure estate.</p> <p>Obligations under section 21(2)(b) of the Children Act 1989 to receive, and provide accommodation for, children in police custody following their arrest when requested to do so by the police under section 38(6) PACE 1984. South Wales Protocol currently being reviewed.</p>
--	--

Stage 3 Reducing housing crisis for when young people experience difficulties in maintaining their accommodation and the support needed to get them back on track.	
Current Provision	Gaps identified/ Future Developments
Personal Advisors	Key role in supporting young people to maintain their independence.
Supporting People Programme Floating Support: <ul style="list-style-type: none"> • Action for Children Youth Support Scheme. • Llamau's Young Person Floating Support • Hafa Cymru's Floating Support. 	From April 2019 the new service will be a locality based multiple needs model delivered by 3 providers in Rhondda Cynon and Taf providing floating support to all client groups The project will be accessed through referral to the Supporting People Team. The floating support model will aim to provide a seamless transition, between each level of support and the interventions required based on an individual's level of presenting housing and support needs.
Housing Officers Housing Solutions Team	To work with housing to develop a clear housing pathway including an emergency accommodation pathway for care leavers and young people 16+ years of age. To review Housing's responsibilities to care leavers up to 25 years.

Stage 4

Ensuring young people are ready to move on to longer term accommodation and their own tenancy.

Current Provision	Gaps identified/ Future Developments
Move on Panel - starter flats -	To review the Terms of Reference for the Move on Panel.
St David's Day Fund	Ensure funding is secure under the new Flexibilities Funding Model.
Provision of information. Information currently available on the RCT 2 Sides and Wicid websites	Need to further develop the information held on the websites, link to the work currently being undertaken in relation to Children Looked After; there is a need to develop a comprehensive information/support package for care leavers.
Young people who have been looked after are exempt from paying Council Tax in RCT.	To explore the Local Authority acting as a guarantor to 16/17 years olds in both the public and private housing sectors.

Section 5

Key Objectives

To ensure that children who cannot live with their parents live in suitable accommodation in RCT.

To develop a clear accommodation pathway for care leavers in RCT.

To develop a continuum of accommodation and support to meet the needs of care leavers in RCT.

To reduce the number of care leavers who are placed in B&B accommodation.

Develop a comprehensive support package for care leavers: Inc: production of a handbook, development of independent living skills, tenancy readiness

Key Actions

Continuum of Support

Stage 1	Helping young people to gain skills in preparation for independence and building resilience.
Action	<ul style="list-style-type: none"> • Develop independence training for foster carers and residential staff. Utilise knowledge and experience held in the Disabled Children's Service in developing tailored independence programmes e.g. OCN and Asdan Models. Review programmes undertaken in other LAs. • Review the use of the training flats consider where they should be on a continuum of support. • Ensure the GRAMO scheme is embedded within the support continuum. • Review the transition process to the 16+ Teams, to ensure the requirements of the SSWB (Wales) Act 2014 are met. • Develop a comprehensive support package for care leavers: Inc; production of a handbook, development of independent living skills, tenancy readiness. • Accessible advocacy provision.

Stage 2	Planning accommodation and support options
Action	<ul style="list-style-type: none"> • There is a need to streamline the current pathways to access accommodation and support and develop one clear multi-agency pathway. To include care leavers that access support from Adult Social Care and require specialist accommodation. • Review the remit of all panels currently in operation to establish where duplication of roles exists; work in partnership with other agencies to develop one accommodation panel for care leavers. • Review levels of provision based on projected demand in particular with regard to the When I'm Ready and Supported Lodging Schemes. There has been a steady increase in the number of children 16+ years of age requiring support in recent years, this is likely to continue. This is reflected in the increase in the number of care leavers remaining with foster carers post 18 years as part of the When I'm Ready programme or in a Supported Lodging arrangement. • Undertake further detailed analysis of the permanency plans for the children looked after in the 10 to 15 years cohort to improve/support. • To undertake the consistent capture of data and analysis of the support provided to young people leaving care 18-25 years. • To work with colleagues across RCT to identify the potential for combining other funding streams. This to include looking for opportunities within the Children and Communities and Housing Support Grants (which include Supporting People, Homelessness Prevention Grant , Rent Smart Wales and St David's Day Fund) funding streams from the 1st April 2019. • To explore specialist foster care support, i.e. mother & baby foster placements, remand fostering.
Stage 3	Reducing housing crisis for when young people experience difficulties in maintaining their accommodation and the support needed to get them back on track.
Action	<ul style="list-style-type: none"> • To work with colleagues in Housing to develop a clear emergency accommodation pathway for care leavers in RCT. To develop alternative models of intervention to B & Bs. • Review the role of the Positive Pathway's Project worker located within the Resilient Families Service going forward. Ensure it is part of the support continuum.

	<ul style="list-style-type: none"> • Monitor and support care leavers' access to the new floating support service. • To develop single assessment placements for young people 16+ years. • To compile an annual report outlining the reasons for tenancy failures.
Stage 4	Ensuring young people are ready to move on to longer term accommodation and their own tenancy.
Action	<ul style="list-style-type: none"> • Develop clear and accessible information for care leavers on benefit entitlement and who to contact for support and advice. • To pursue the Local Authority acting as guarantor for young people under 18 years of age in private rented accommodation and post 18 years