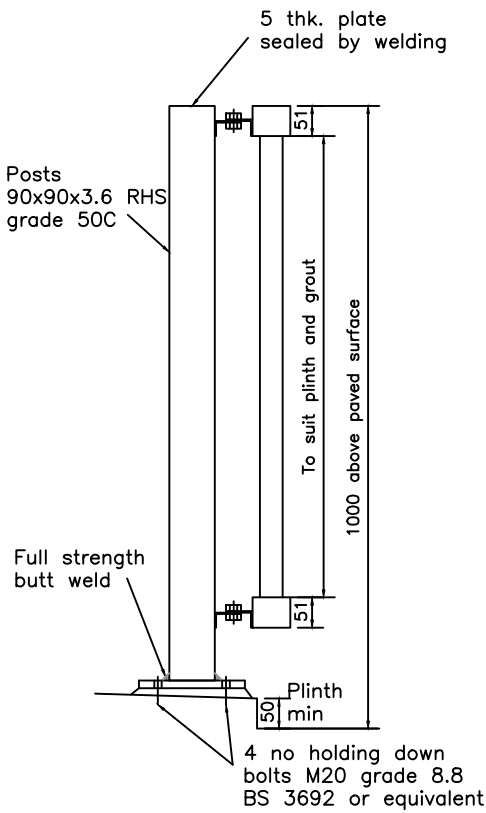
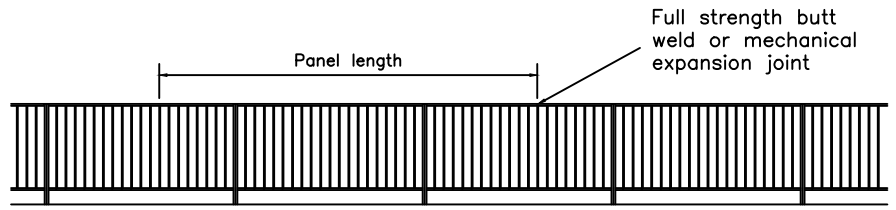


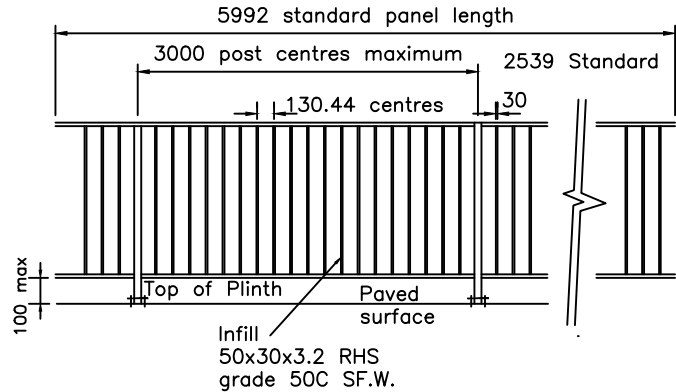
Rev.	Amendments	Date	Made By	Chk'd By



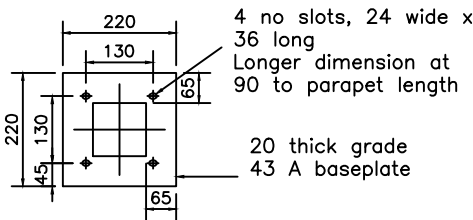
TYPICAL SECTION THROUGH PARAPET



TYPICAL ELEVATION OF PARAPET

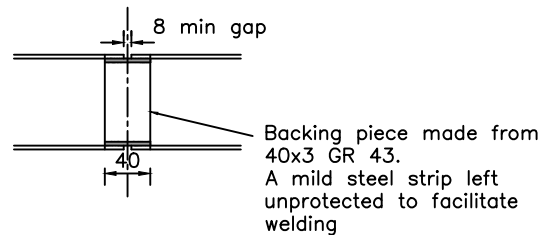


TYPICAL PANEL

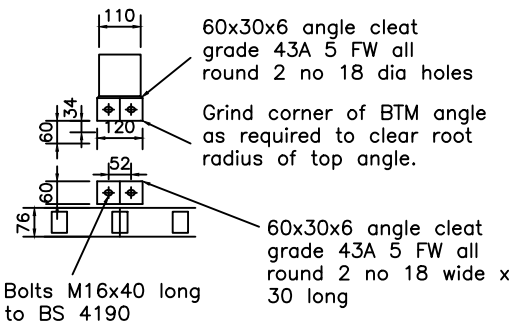


Moments of resistance of base anchorage 21 KN/m

PLAN OF BASEPLATE



SITE JOINT IN LONGITUDINALS  
FULL STRENGTH BUTT WELD



LONGITUDINAL TO POST CONNECTION

**NOTES**

1. All dimensions in millimetres unless otherwise stated.
2. Posts to be vertical : rails to follow longitudinal fall of coping (infill members to be vertical)
3. Cleats to be set to suit slope of longitudinals
4. All material to be in accordance with BS ISO 4360 grade of material as noted
5. Hollow sections to be in accordance with BS 4848 Part 2
6. Welding to be in accordance with BS EN ISO 5135
7. Parapets to be mounted on 50mm minimum height plinth.

GROUP P2 VERTICAL INFILL VEHICLE / PEDESTRIAN PARAPET  
48KPH TRAFFIC SPEED

HIGHWAY DESIGN GUIDE STANDARD DETAILS

RHONDDA CYNON TAF  
COUNTY BOROUGH COUNCIL



Drawn	DA
Checked	SZ
Date	Apr '11
Scale	NTS
Drg. No.	163
Rev.	