

© Hyswriad y Goron (a hyswriad y goron ddiab) 2023 OS AC000811047. Mae hawl gyda chi i ddefnyddio'r data yma dim ond at ddibenion ymatedd i'r sefylliad sy'n rhoi'r data i chi, neu at ddibenion cyffwrdd ag ef. Does dim hawl gyda chi i gopïo neu si-drewyddio'r data yma ar unrhydd parti, neu'i ddiroddu neu'i werthu iddyn chi.

© Crown copyright (and database right) 2023 OS AC000811047. You are permitted to use this data solely to enable you to respond to, or interact with, the organisation that provided you with the data. You are not permitted to copy, sub-licence, distribute or sell any of this data to third parties in any form.

Allwedd / Key

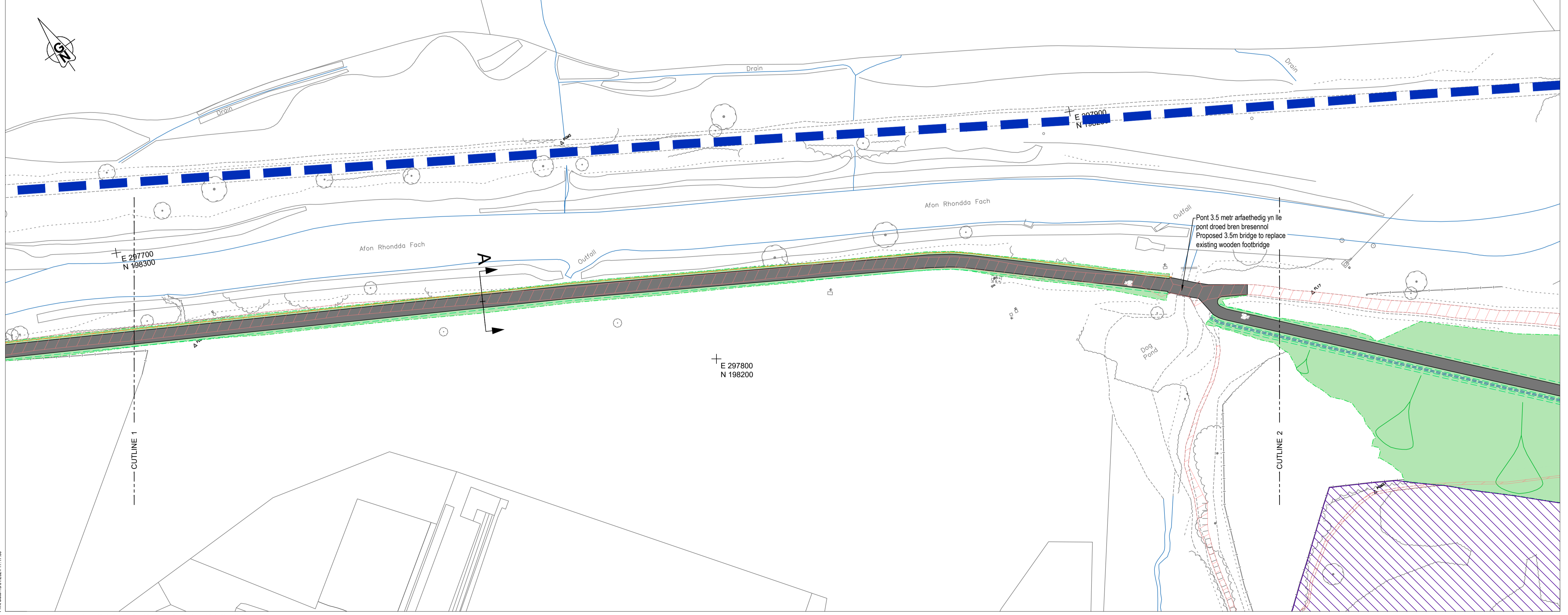
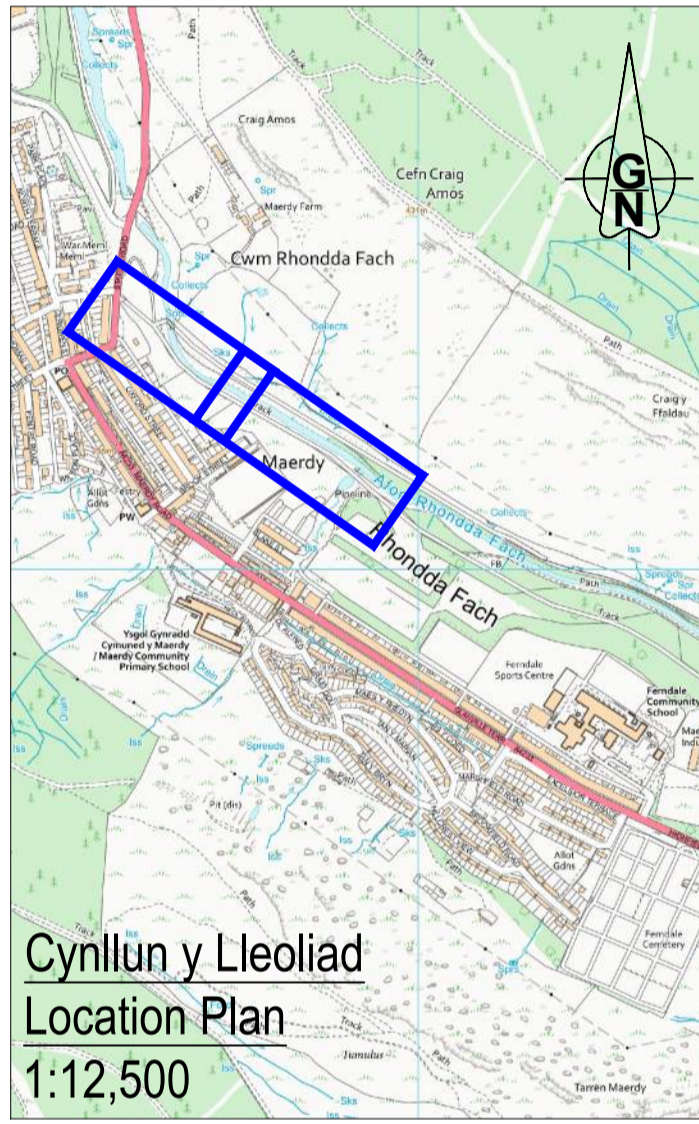
Llybr graen heb ei rwyngw presennol		Existing unbound gravel path
Llybr a rennir arfaethedig wedi'i adeiladu gyda phalmerydd hidraidd		Proposed shared route constructed with permeable paving
Ymylon ac arglawdd arfaethedig - cyfeirwch at nodyn 4		Proposed verge and embankment - refer to note 4
Ffos ddraenio a llan ymyl arfaethedig		Proposed drainage ditch and verge
Postyn pren 1.4 metr o uchder a ffens pedair rheilen arfaethedig		Proposed 1.4m high timber post and four rail fence
Ffensys palisad 2.1 metr o uchder arfaethedig ar gyfer fin yr ysgol		Proposed 2.1m high palisade fencing for school boundary
Mainc bwrpasol yn adlewyrchu treftadaeth leol		Bespoke bench reflecting local heritage
Llybr Teithio Llesol Rhondda Fach - Cam 2		Rhondda Fach Active Travel Route - Phase 2

Nodiadau

- Am fanylion y trawsuniau, cyfeirwch at luniadau P187-S3-71-04 a 05.
- Ar gyfer arwynebau hidraidd a manylion adeiladu'r ddaen asgell (fin drain), cyfeirwch at luniadau P187-S3-71-06, 07 a 08.
- Am fanylion am y draeniad cyfeirwch at luniadau P187-S3-71-06, 07 a 08.
- Lle bo'n bosibl, bydd uwchbridd yn cael ei gadw ar y safle i gadw'r banc hadau gyda'r llystyfiant yn cael ailgyfnewid yn dilyn y gwaith.

Notes

- For section details refer to drawings P187-S3-71-04 and 05.
- For permeable surfacing and fin drain construction details refer to drawings P187-S3-71-06, 07 and 08.
- For drainage details refer to drawings P187-S3-71-06, 07 and 08.
- Where possible topsoil will be kept on site to preserve the seedbank with vegetation allowed to regenerate following the works.



Manylion Adolygiad/Revision Details

Project/Project	GenBy	Dyddiad/Date	Adolygiad/Revision
Llybr Teithio Llesol Rhondda Fach Luniadau Cynllunio Cam 3			
Rhondda Fach Active Travel Route Phase 3 Planning Drawings			
Tafll y Llun/ Draw Title			
Cynllun Cyffredinol (Taflen 1 o 2)			
General Arrangement (Sheet 1 of 2)			
Rif y Proiect/Project No.	Graddfa/Scale @ A1	Dyddiad/Date	
P187	1:500	01/24	
Tafll y Llun/Draw No.	Adolygiad/Revision		
P187-S3-71-02	P00		
Paratowyd gan/Prepared by: JS			
Gwirwyd gan/Checked by: Cymuneddydd gan/Approved by: JS			

RHONDDA CYNON TAF
PRIFYRDD, GOFAL Y STRYDOEDD
A THRAFNDIAETH

RHONDDA CYNON TAF
HIGHWAYS, STREETCARE AND
TRANSPORTATION

PROSIECTAU STRATEGOL/ STRATEGIC PROJECTS
Ty Sardin/Sardin House, Heol Sardin/Sardin Road, Pontypridd, CF37 1DU
Ffôn/Tel: 01443 425001 Ffacs/Fax: 01443 430414

Print Date: 19/01/2024 11:17:00