

Allwedd / Key

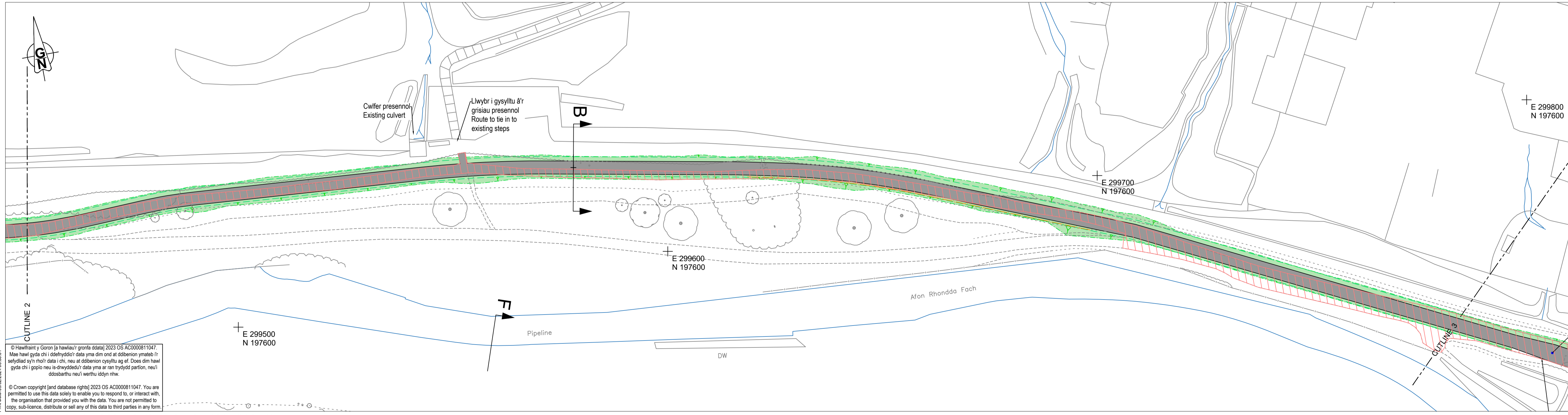
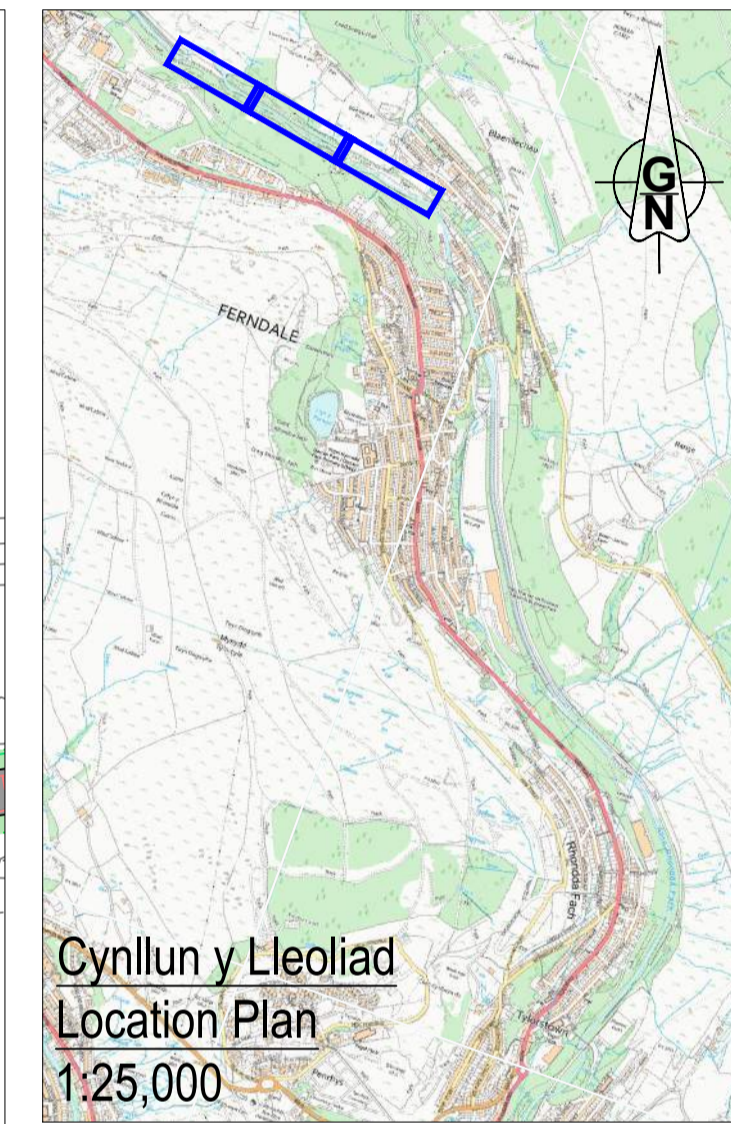
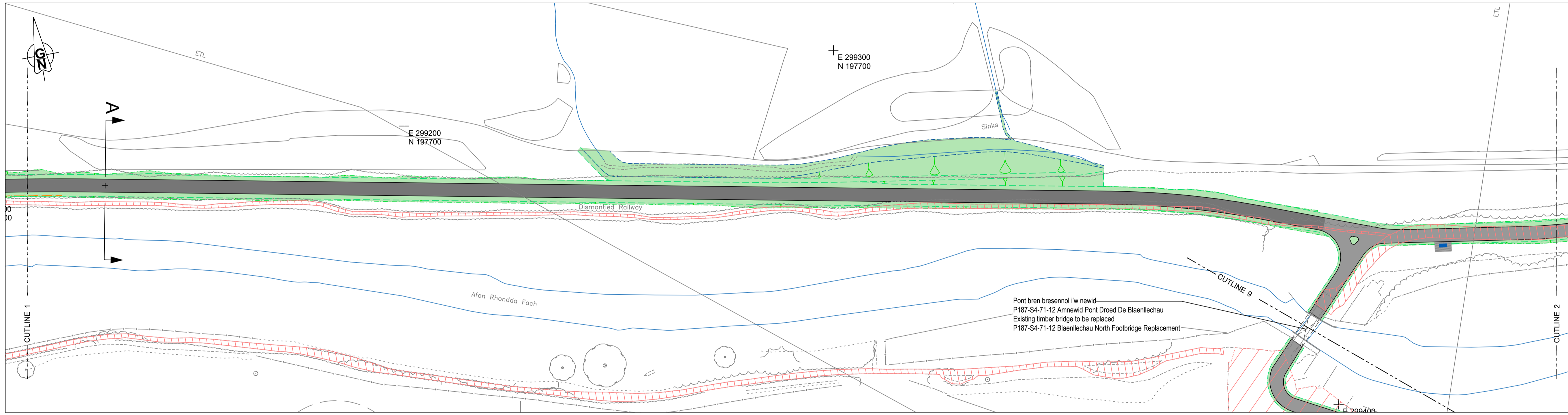
Llywyr graean di-goncrit presennol		Existing unbound / bound gravel path
Llywyr a rennir arfaethedig wedi'i adeiladu gyda phalmetydd hydraidd		Proposed shared route constructed with permeable paving
Llywyr a rennir arfaethedig wedi'i adeiladu gyda phalmetydd asfalt		Proposed shared route constructed with asphalt paving
Yrnylon ac arglwydd arfaethedig - cyfeirwch at nodyn 3		Proposed verge and embankment - refer to note 3
Ffos ddraenio a llain ymyl arfaethedig		Proposed 1.4m high timber post and four rail fence
Postyn pren 1.4 metr o uchder a ffens pedair rheilren arfaethedig		Bespoke bench reflecting local heritage
Mainc bwrpasol yn adlewyrchu treftadaeth leol		

Nodiadau

- Am fanylion y trawsuniau, cyfeirwch at luniadau P187-S4-71-0x a 0x.
- Ar gyfer arwynebau hydraidd a manylion adeiladu'r ddraen asgl (fin drain), cyfeirwch at lun P187-S4-71-0x.
- Am fanylion am y draeniad cyfeirwch at luniadau P187-S4-71-0x.
- Lle bo'n bosibl, bydd uwchbridd yn cael ei gadw ar y safle i gadw'r banc hadau gyda'r llystyfiant yn cael ailgyhoeddi yn dilyn y gwaith.

Notes

- For section details refer to drawings P187-S4-71-0x and 0x.
- For permeable surfacing and fin drain construction details refer to drawing P187-S4-71-0x.
- For drainage details refer to drawings P187-S4-71-0x.
- Where possible topsoil will be kept in site to preserve the seedbank with vegetation allowed to regenerate following the works.



Manylion Adolygiad/Revision Details		GenBy	Dyddiad/Date	Adolygiad/Revision
Project/Project				
Llywyr Teithio Llesol Rhondda Fach Luniadau Cynllunio Cam 4				
Rhondda Fach Active Travel Route Phase 4 Planning Drawings				
Title y Llywyr Draw Title				
Cynllun Cyffredinol (Taflen 1 o 4)				
General Arrangement (Sheet 1 of 4)				
Rif y Project/Project No.	Graddfwrdd/Scale @ A1	Dyddiad/Date		
P187	1:500	02/24		
Title y Llywyr Draw No.		Adolygiad/Revision		
P187-S4-71-02		P00		
Paratowyd gan/Prepared by:	Gwiriwyd gan/Checked by:	Cymredwyd gan/Approved by:		
JS	LK	NM		
		RHONDDA CYNON TAF PRIFYRD, GOFAL Y STRYDOEDD A THRAFNDIAETH RHONDDA CYNON TAF HIGHWAYS, STREETCARE AND TRANSPORTATION		
PROSIECTAU STRATEGOL/STRATEGIC PROJECTS Ty Sardinia/Sardinia House, Heol Sardinia/Sardinia Road, Pontypridd, CF37 1DU Ffôn/Tel: 01443 425001 Ffacs/Fax: 01443 430414				

© Crown copyright (and database rights) 2023 OS AC0000811047. You are permitted to use this data solely to enable you to respond to, or interact with, the organisation that provided you with the data. You are not permitted to copy, sub-licence, distribute or sell any of this data to third parties in any form.



Allwedd / Key

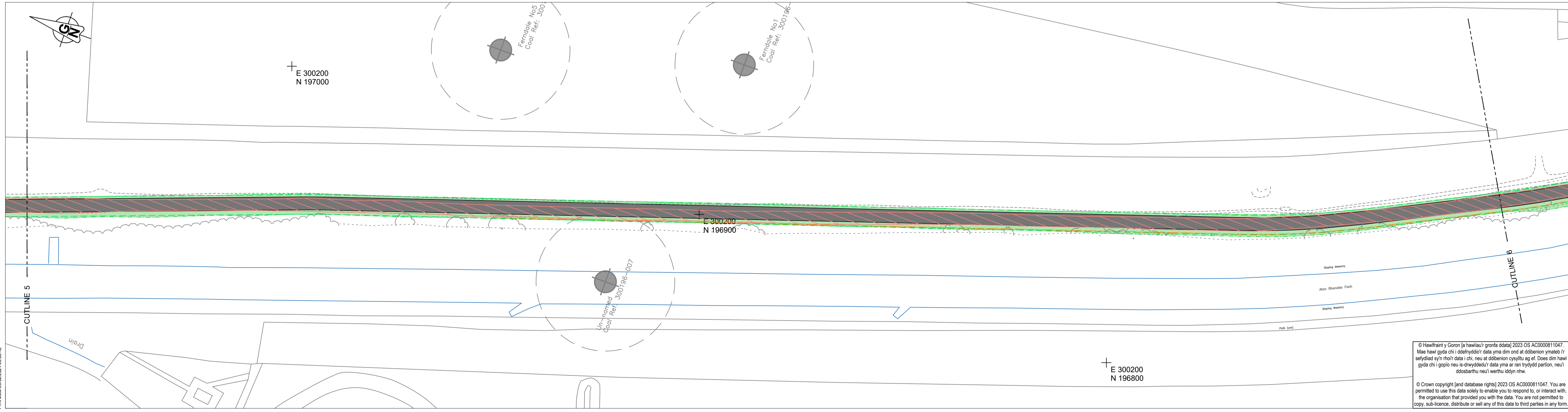
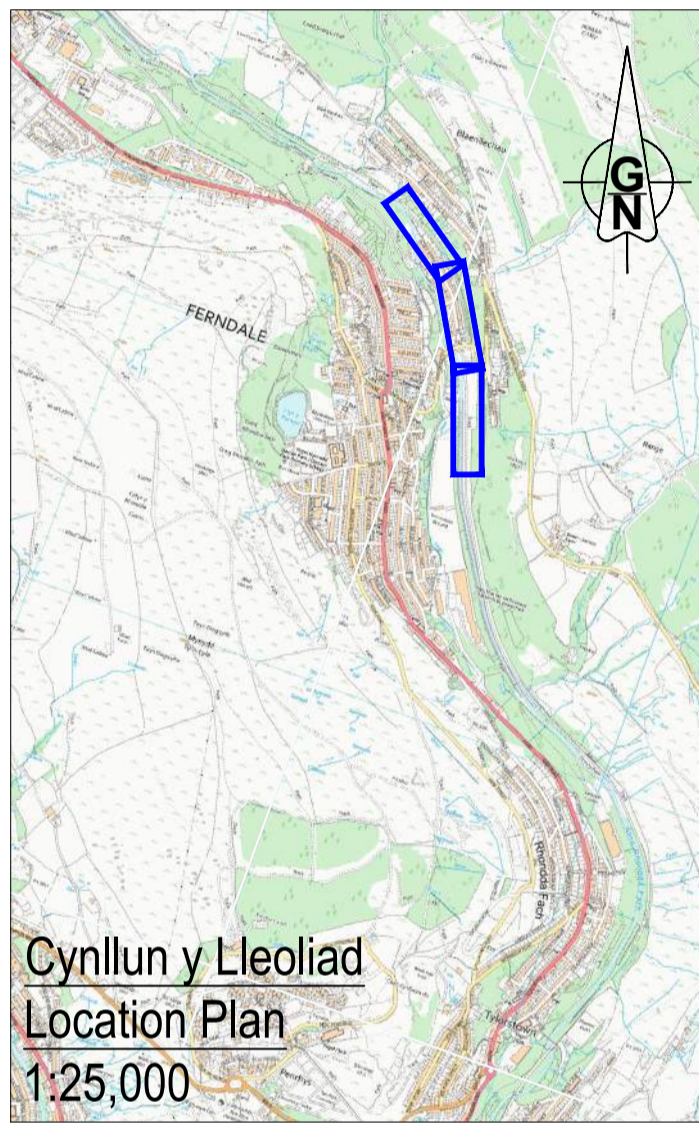
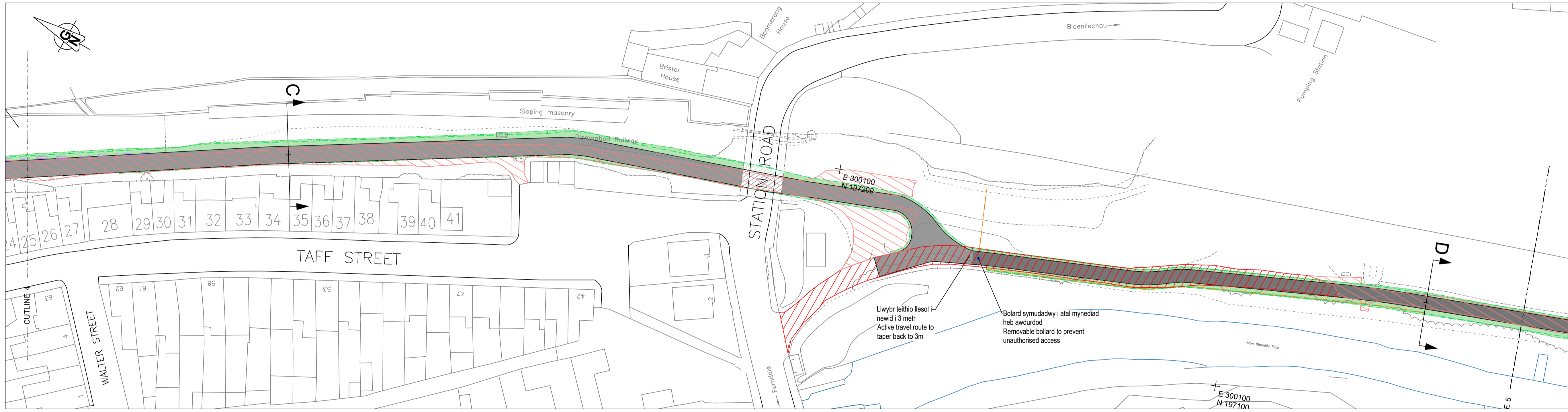
- Lwybr graean di-goncrit presennol: Existing unbound / bound gravel path
- Lwybr a rennir arfaethedig wedi'i adeiladu gyda phalmetydd hidraidd: Proposed shared route constructed with permeable paving
- Lwybr a rennir arfaethedig wedi'i adeiladu gyda phalmetydd asffalt: Proposed shared route constructed with asphalt paving
- Yrnylon ac arglwydd arfaethedig - cyfeiriwch at nodyn 3: Proposed verge and embankment - refer to note 3
- Ffos ddraenio a llain ymyl arfaethedig: Proposed 1.4m high timber post and four rail fence
- Postyn pren 1.4 metr o uchder a ffens pedair rhellen arfaethedig: Bespoke bench reflecting local heritage
- Mainc bwrpasol yn adlewyrchu treftadaeth leol

Nodiadau

- Am fanylion y trawsuniau, cyfeiriwch at luniadau P187-S4-71-0x a 0x.
- Ar gyfer arwynebau hidraidd a manylion adeiladu'r ddrain asgell (fin drain), cyfeiriwch at lun P187-S4-71-0x.
- Am fanylion am y draeniad cyfeiriwch at luniadau P187-S4-71-0x.
- Lle bo'n bosibl, bydd uwchbridd yn cael ei gadw ar y safle i gadw'r banc hadau gyda'r llystyfiant yn cael ailgyfyngu yn dilyn y gwaith.

Notes

- For section details refer to drawings P187-S4-71-0x and 0x.
- For permeable surfacing and fin drain construction details refer to drawing P187-S4-71-0x.
- For drainage details refer to drawings P187-S4-71-0x.
- Where possible topsoil will be kept in site to preserve the seedbank with vegetation allowed to regenerate following the works.



Manylion Adolygiad/Revision Details

Project/ Project: Lwybr Teithio Llesol Rhondda Fach Lluniadau Cynllunio Cam 4

Rhondda Fach Active Travel Route Phase 4 Planning Drawings

Tafll y Lluni Dwg Title: Cynllun Cyffredinol (Taflen 2 o 4)

General Arrangement (Sheet 2 of 4)

Rhif y Project/ Project No. P187	Graddfa/ Scale @ A1 1:500	Dyddiad/ Date 02/24
Tafll y Lluni Dwg No. P187-S4-71-03	Adolygiad/ Revision P00	
Paratowyd gan/ Prepared by: JS	Gwirwyd gan/ Checked by: LK	Cymeradwyd gan/ Approved by: NM

© Hwiriariant y Goron (a hawlau'r gorffo ddada) 2023 OS AC0000811047. Mae hawl gyda chi i ddiwyddoedd y data yma dim ond at ddiwyddoedd ymstrawbe'r sefydliad sy'n rhoi'r data i chi, neu at ddiwyddoedd cyffwrdd ag ef. Does dim hawl gyda chi i gopïo neu si-dwyddoedd y data yma ar ran hyspysd partion, neu i ddiwyddoedd neu'wreiddio'n new.

© Crown copyright (and database rights) 2023 OS AC0000811047. You are permitted to use this data solely to enable you to respond to, or interact with, the organisation that provided you with the data. You are not permitted to copy, sub-licence, distribute or sell any of this data to third parties in any form.

RHONDDA CYNON TAF PRIFYRDOD, GOFAL Y STRYDOEDD A THRAFNDIAETH
RHONDDA CYNON TAF HIGHWAYS, STREETCARE AND TRANSPORTATION
PROSIECTAU STRATEGOL/ STRATEGIC PROJECTS
Ty Sardinia/Sardinia House, Heol Sardinia/Sardinia Road, Pontypridd, CF37 1DU
Ffôn/Tel: 01443 425201 Ffacs/Fax: 01443 430414

Allwedd / Key

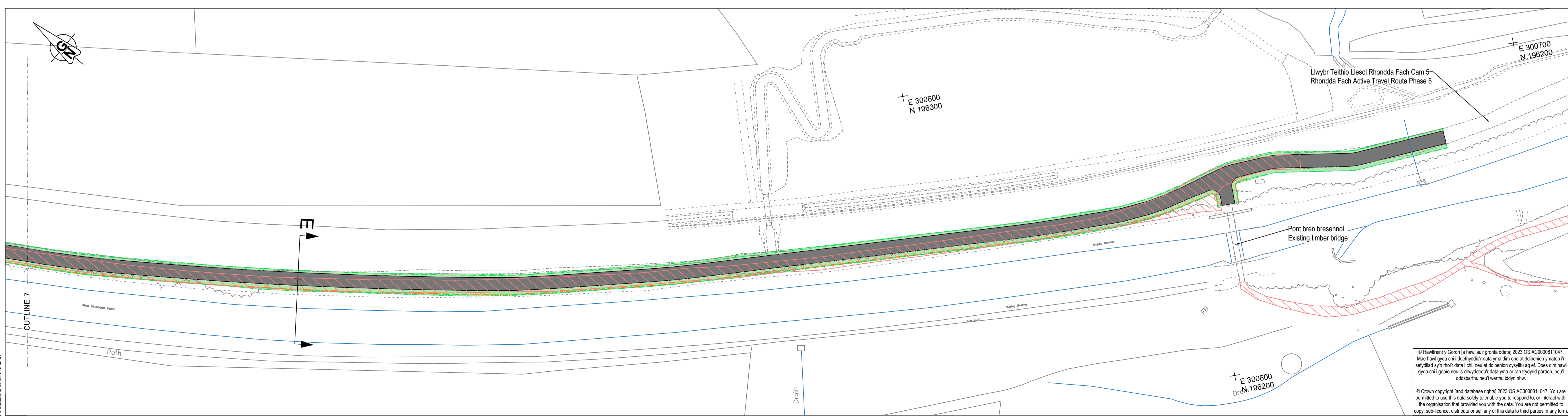
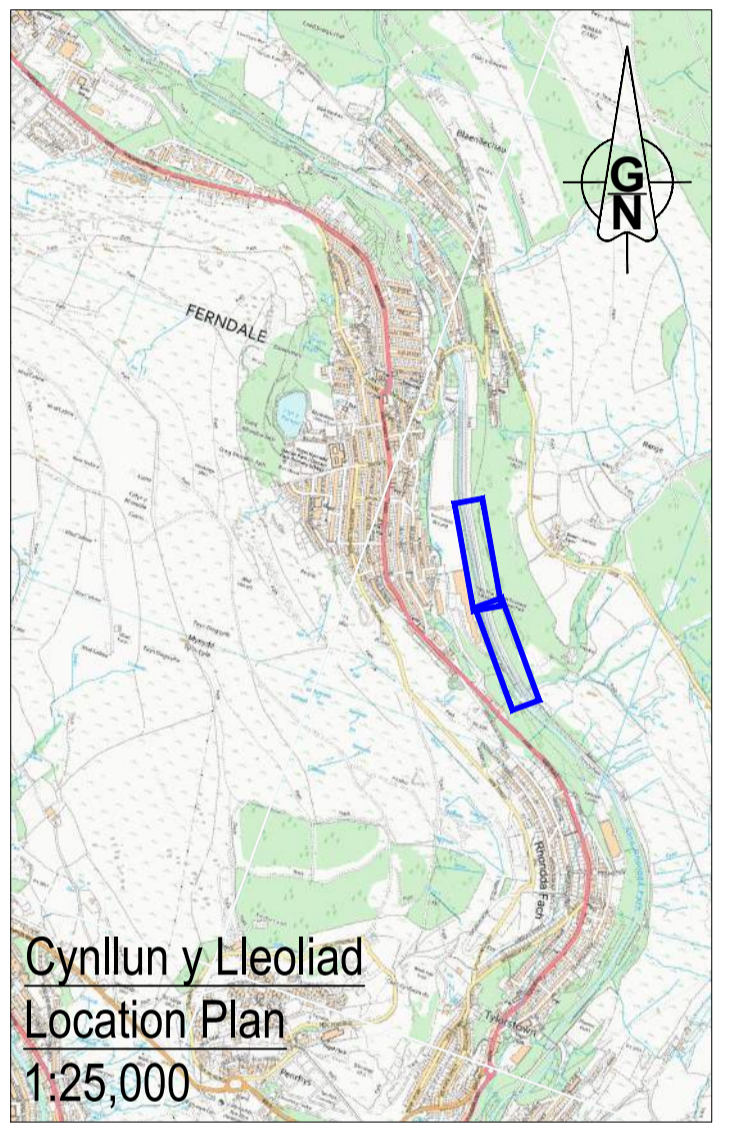
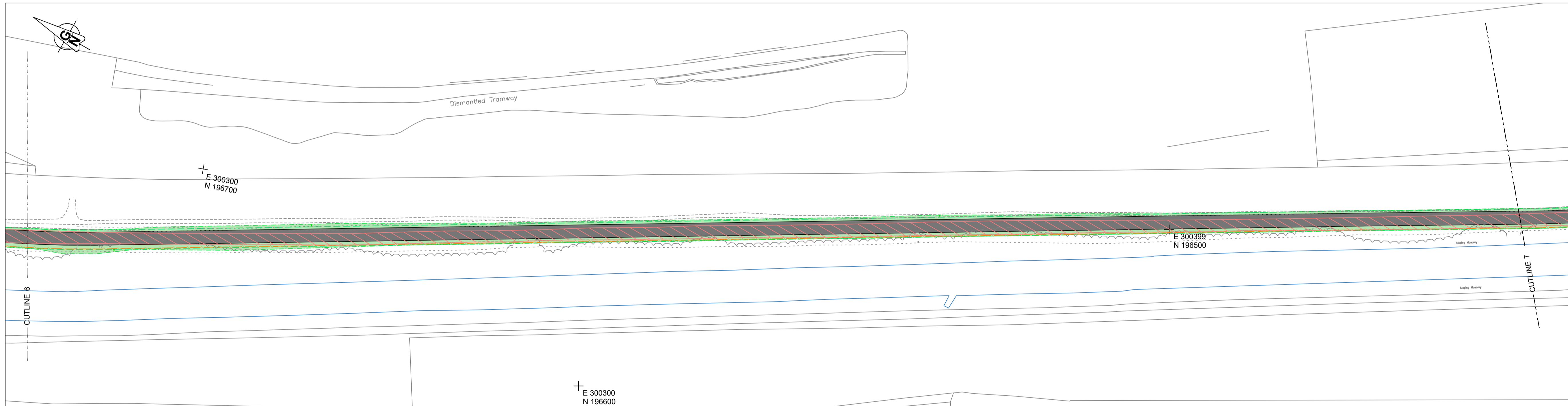
Llwybr graean di-goncrit presennol		Existing unbound / bound gravel path
Llwybr a rennir arfaethedig wedi'i adeiladu gyda phalmentydd hydraidd		Proposed shared route constructed with permeable paving
Llwybr a rennir arfaethedig wedi'i adeiladu gyda phalmentydd asffalt		Proposed shared route constructed with asphalt paving
Yrmylon ac arglawdd arfaethedig - cyfeirwch at nodyn 3		Proposed verge and embankment - refer to note 3
Ffos ddraenio a llain ymyl arfaethedig		Proposed 1.4m high timber post and four rail fence
Postyn pren 1.4 metr o uchder a ffens pedair rheilch arfaethedig		Bespoke bench reflecting local heritage
Mainc bwrpasol yn adlewyrchu treftadaeth leol		

Nodiadau

- Am fanylion y trawsuniau, cyfeirwch at luniadau P187-S4-71-0x a 0x.
- Ar gyfer arwynebau hydraidd a manylion adeiladu'r ddraen asgell (fin drain), cyfeirwch at lun P187-S4-71-0x.
- Am fanylion am y draeniad cyfeirwch at luniadau P187-S4-71-0x.
- Lle bo'n bosibl, bydd uwchbridd yn cael ei gadw ar y safle i gadw'r banc hadau gyda'r llystyfiant yn cael ailgyhoeddi yn dilyn y gwaith.

Notes

- For section details refer to drawings P187-S4-71-0x and 0x.
- For permeable surfacing and fin drain construction details refer to drawing P187-S4-71-0x.
- For drainage details refer to drawings P187-S4-71-0x.
- Where possible topsoil will be kept in site to preserve the seedbank with vegetation allowed to regenerate following the works.



Manylion Adolygiad/Revision Details

Project/Project	GenBy	Dyddiad/Date	Adolygiad/Revision
Llwybr Teithio Llesol Rhondda Fach Luniadau Cynllunio Cam 4			
Rhondda Fach Active Travel Route Phase 4 Planning Drawings			
Tafll y Lluoi Dwg Title			
Cynllun Cyffredinol (Tafll 3 o 4)			
General Arrangement (Sheet 3 of 4)			
Rif y Proiect/Project No.	Graddfwrdd/Scale @ A1	Dyddiad/Date	Adolygiad/Revision
P187	1:500	02/24	P00
Tafll y Lluoi Dwg No.	Paratowyd gan/Prepared by	Gwirwyd gan/Checked by	Cymeradwyd gan/Approved by
P187-S4-71-04	JS	LK	NM

© Hwiriariant y Goron (a hawliau'r gorfffa ddada) 2023 OS AC0000811047. Mae hawl gyda chi i ddiwydosio'r data yma dim ond at ddiwydosio ymateb i'r sefydliad sy'n rhoi'r data i chi, neu at ddiwydosio cyfnewtiau ag ef. Does dim hawl gyda chi i gopïo neu si-dwyddosio'r data yma ar ran ffisïol partion, neu'i ddiwydosio neu'i werthu i ddyn eraill.

© Crown copyright (and database rights) 2023 OS AC0000811047. You are permitted to use this data solely to enable you to respond to, or interact with, the organisation that provided you with the data. You are not permitted to copy, sub-license, distribute or sell any of this data to third parties in any form.

RHONDDA CYNON TAF
RHONDDA CYNON TAF
PRIFYRDOD, GOFAL Y STRYDOEDD
A THRAFNDIAETH
RHONDDA CYNON TAF
HIGHWAYS, STREETCARE AND
TRANSPORTATION

PROSIECTAU STRATEGOL/STRATEGIC PROJECTS
Ty Sardinia/Sardinia House, Heol Sardinia/Sardinia Road, Pontypridd, CF37 1DU
Ffôn/Tel: 01443 425001 Ffacs/Fax: 01443 430414



Allwedd / Key

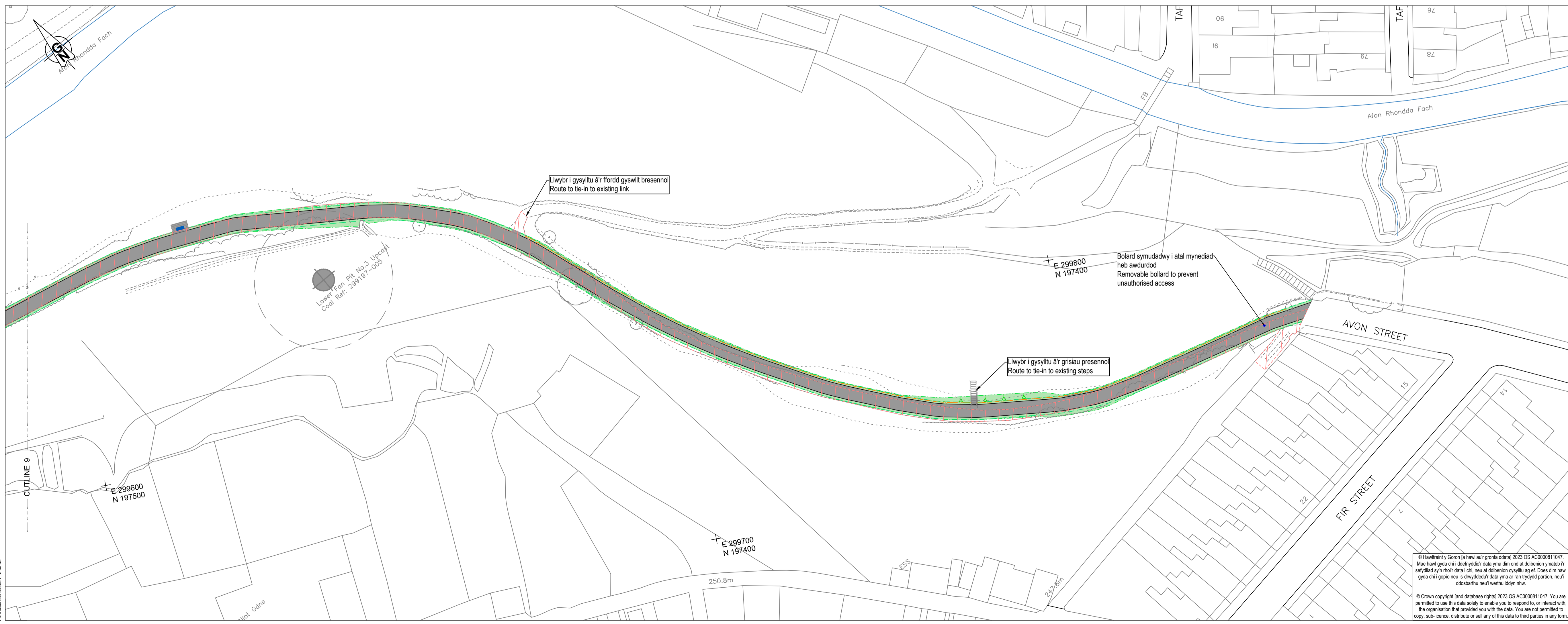
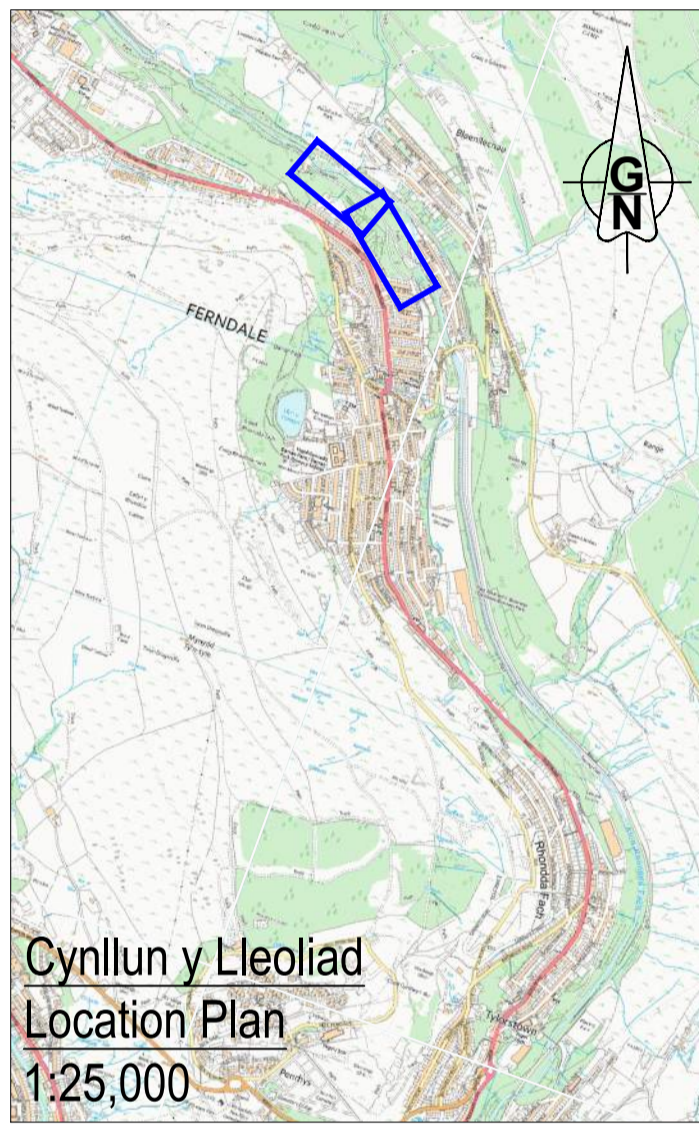
- Llwybr graean di-goncrit presennol: Existing unbound / bound gravel path
- Llwybr a rennir arfaethedig wedi'i adeiladu gyda phalmentydd hydraidd: Proposed shared route constructed with permeable paving
- Llwybr a rennir arfaethedig wedi'i adeiladu gyda phalmentydd asfalt: Proposed shared route constructed with asphalt paving
- Yrnylon ac arglwydd arfaethedig - cyfeirwch at nodyn 3: Proposed verge and embankment - refer to note 3
- Ffos ddraenio a llain ymyl arfaethedig: Proposed 1.4m high timber post and four rail fence
- Postyn pren 1.4 metr o uchder a ffens pedair rheilren arfaethedig: Bespoke bench reflecting local heritage
- Mainc bwrpasol yn adlewyrchu treftadaeth leol

Nodiadau

- Am fanylion y trawsuniau, cyfeirwch at luniadau P187-S4-71-0x a 0x.
- Ar gyfer arwynebau hydraidd a manylion adeiladu'r ddraen asgell (fin drain), cyfeirwch at lun P187-S4-71-0x.
- Am fanylion am y draeniad cyfeirwch at luniadau P187-S4-71-0x.
- Lle bo'n bosibl, bydd uwchbridd yn cael ei gadw ar y safle i gadw'r banc hadau gyda'r llystyfiant yn cael ailgyhoeddi yn dilyn y gwaith.

Notes

- For section details refer to drawings P187-S4-71-0x and 0x.
- For permeable surfacing and fin drain construction details refer to drawing P187-S4-71-0x.
- For drainage details refer to drawings P187-S4-71-0x.
- Where possible topsoil will be kept in site to preserve the seedbank with vegetation allowed to regenerate following the works.



Manylion Adolygiad/Revision Details

Project/Project	GenBy	Dyddiad/Date	Adolygiad/Revision
Llwybr Teithio Llesol Rhondda Fach Luniadau Cynllunio Cam 4			
Rhondda Fach Active Travel Route Phase 4 Planning Drawings			
Tafll y Lluni Dwg Title			
Cynllun Cyffredinol (Tafllen 4 o 4)			
General Arrangement (Sheet 4 of 4)			
Rif y Proiect/Project No. P187	Graddfa/Scale @ A1 1:500	Dyddiad/Date 02/24	
Tafll y Lluni Dwg No. P187-S4-71-05		Adolygiad/Revision P00	
Paratowyd gan/Prepared by: JS	Gwinydd gan/Checked by: LK	Cymeradwydd gan/Approved by: NM	

RHONDDA CYNON TAF
PRIFYRD, GOFAL Y STRYDOEDD A THRAFNDIAETH
RHONDDA CYNON TAF
HIGHWAYS, STREETCARE AND TRANSPORTATION
PROSIECTAU STRATEGOL/STRATEGIC PROJECTS
Ty Sardin/Sardin House, Heol Sardin/Sardin Road, Pontypridd, CF37 1DU
Ffôn/Tel: 01443 425011 Ffacs/Fax: 01443 430414

P187-S4-71-05-05