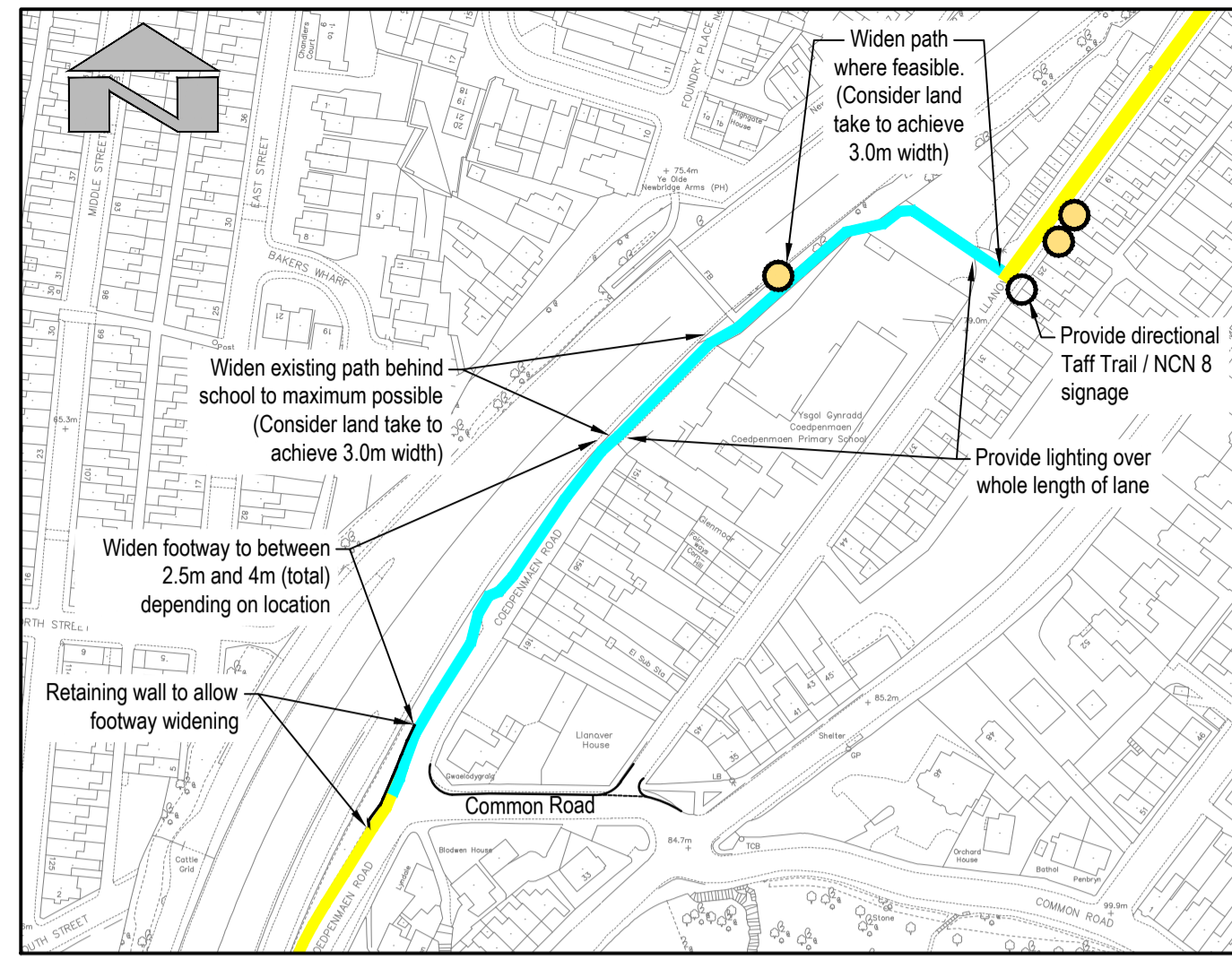
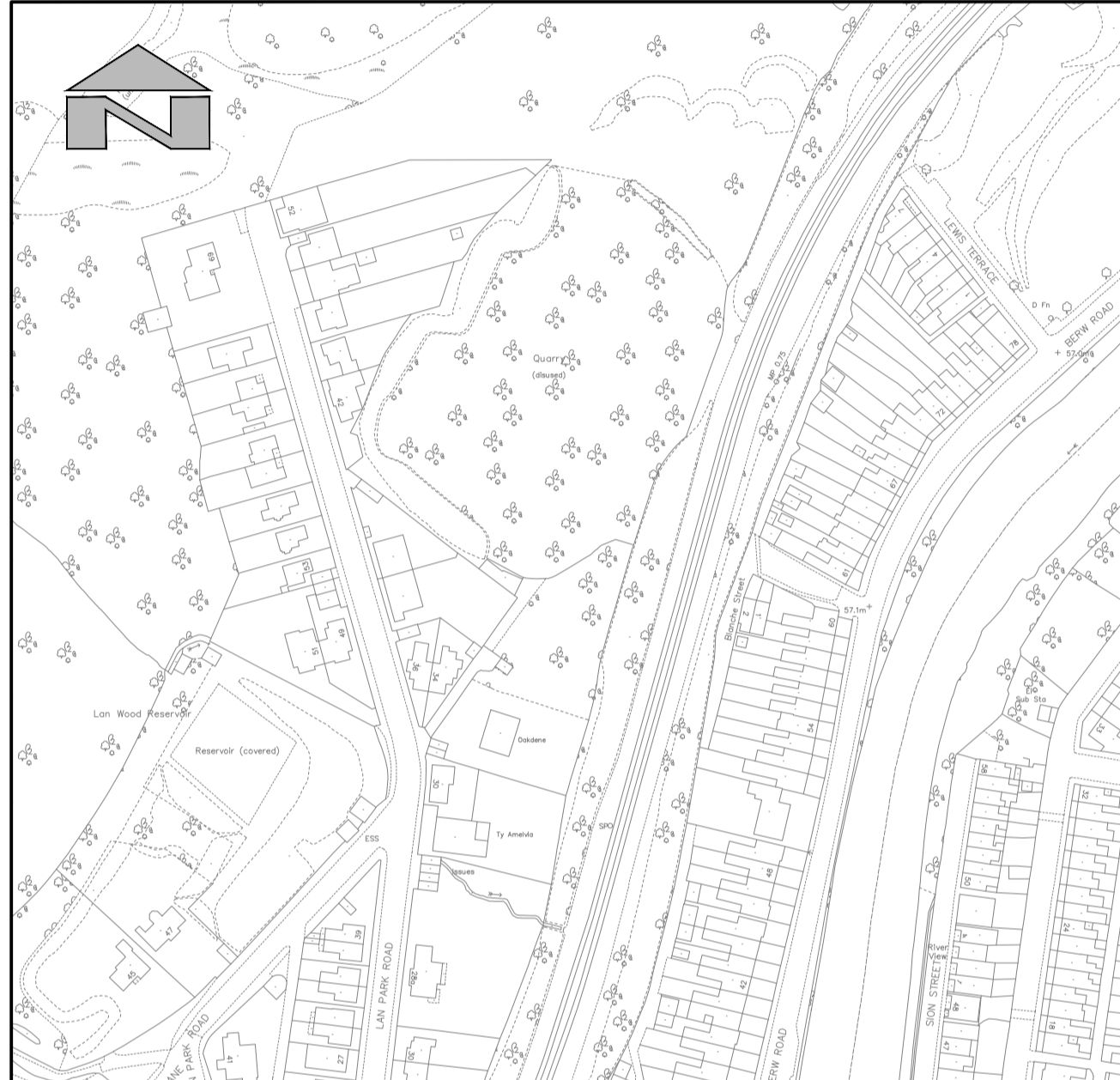
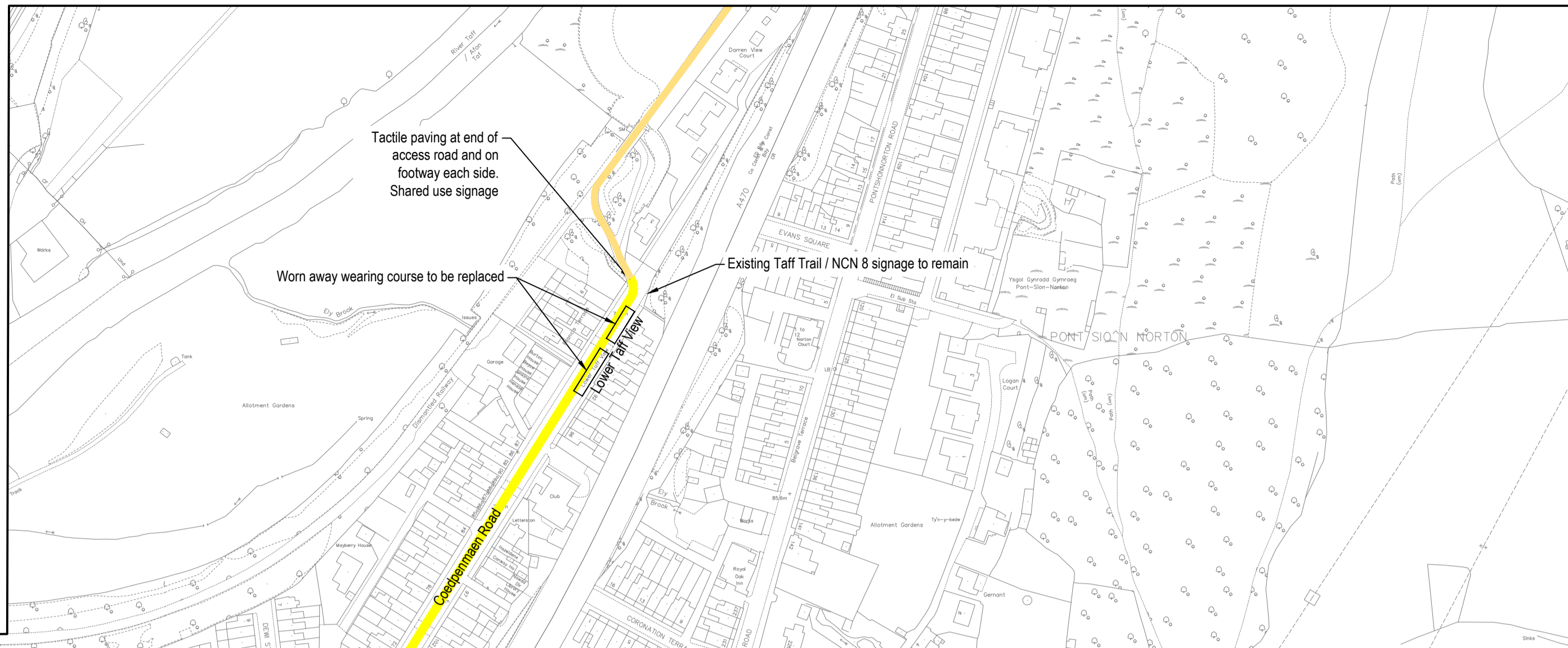


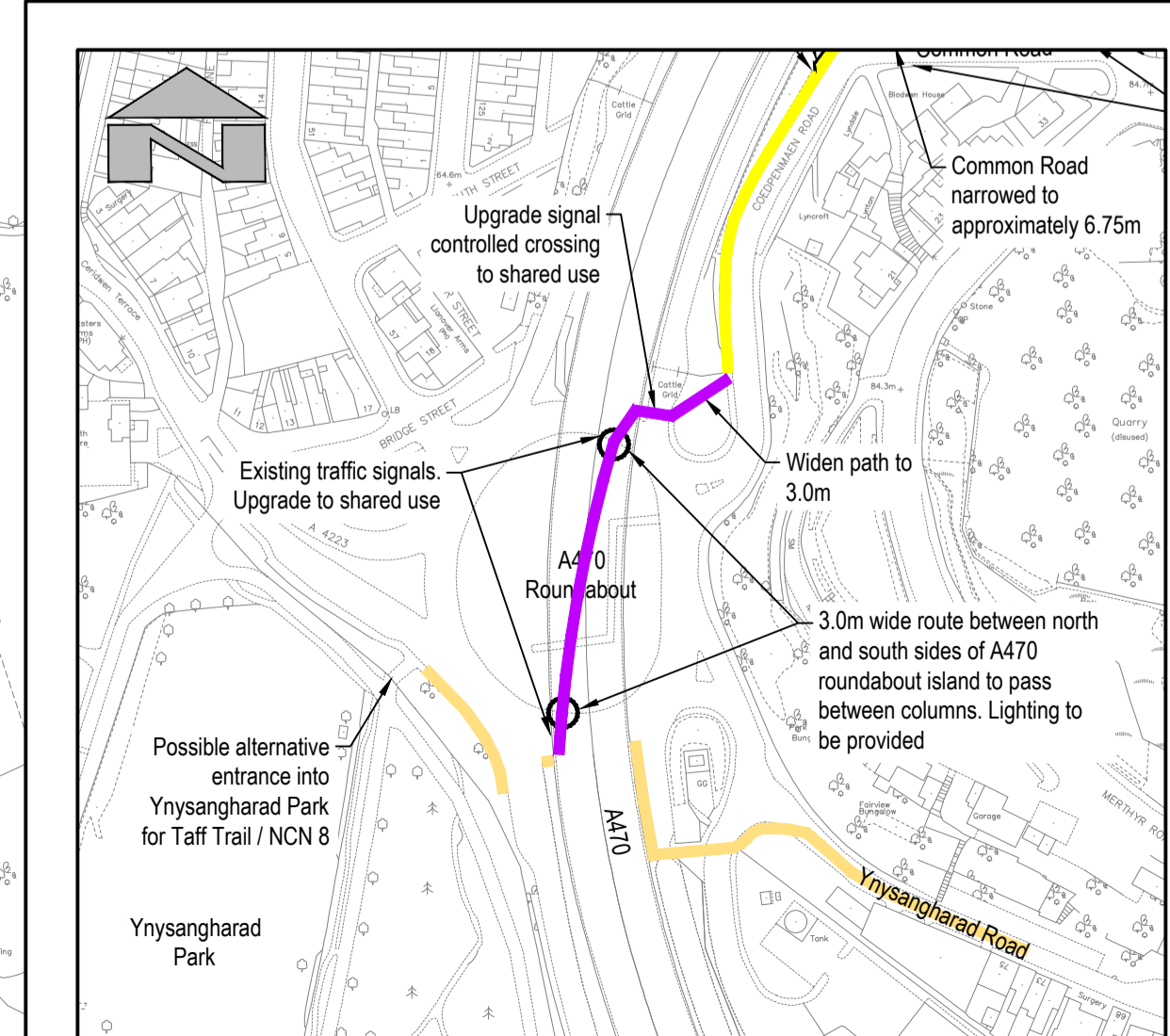
Blue Variation



Cyan Variation Associated with Coedpenmaen Road / Llanover Road Section



Trallwn



Purple Variation at A470 Roundabout

- Key
- Existing Taff Trail (NCN 8)
  - Common Route
  - Blue Variation
  - Red Variation
  - Cyan Variation
  - Purple Variation
  - Provide tactile paving
  - Provide dropped kerbs and tactile paving

- Notes
- The red and green variations in the vicinity of the A470 roundabout have been added from Option 1.

SAFETY, HEALTH AND ENVIRONMENTAL INFORMATION	
IN ADDITION TO THE HAZARDS/RISKS NORMALLY ASSOCIATED WITH THE TYPES OF WORK DETAILED ON THIS DRAWING, NOTE THE FOLLOWING	
	None
For further details on risks refer to the designers risk assessments	
IT IS ASSUMED THAT ALL WORKS WILL BE CARRIED OUT BY A COMPETENT CONTRACTOR WORKING, WHERE APPROPRIATE, TO AN APPROVED METHOD STATEMENT	
© Hewlfrant y Goron a hawliau cronfa ddata 2022 Arolwg Ordnans 100023458 © Crown copyright and database rights 2022 Ordnance Survey 100023458	

Rev	Drawn	Checked	App'd	Description	Date
P01	TAJ	DEB		First Issue	

Purpose of Issue  
**S2 - Suitable for information**

Classification  
**Confidential**

Client  
**Rhondda Cynon Taf County Borough Council**

Project  
**Trallwn Active Travel Route NCN Route 8 (Taff Trail) Options Feasibility Study**

Drawing  
**Option 2 and Variations**

Scale @ A1	Drawn	Checked	Approved
1:2,000	TAJ	DEB	DHJ

Project No.  
GC/004302

Date  
Nov 2022

Drawing Identifier  
Project - Originator - Zone - Level - File Type - Role - Number  
GC4302-RED-76-XX-DR-C-0002

ISO19650 Compliant  
revision  
P01

**DRAFT**  
**REDSTART**  
**16/11/2022**

St David's House, Pascal Close, St Mellons, Cardiff, CF3 0LW  
www.redstart.wales.com