

Glyn-coch

a new primary school for Glyn-coch

This month on site

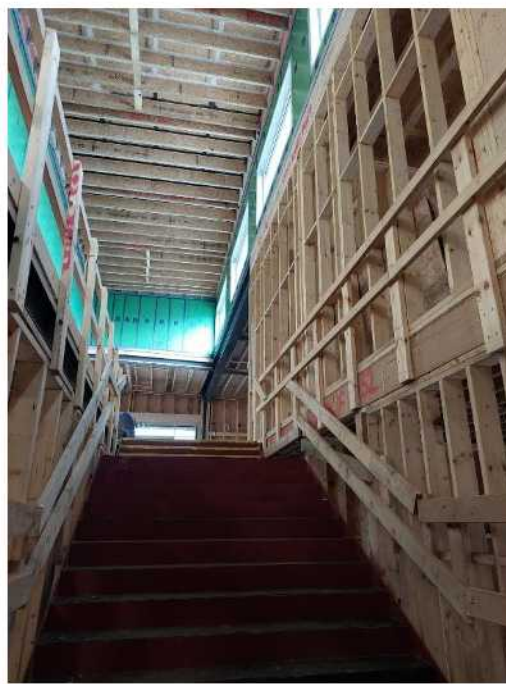
March 2026

Dear Neighbour,

Over the past month, the site has been progressing on several areas. Roofing work has continued which has allowed us to lift air handling units onto the roof! The brickwork to the school has also advanced with the start of the glazed bricks. Internally, our first staircase has been built and we have continued to board and insulate. In the next month, the first side of scaffolding will start to get dismantled, which will allow us to see the finished brickwork!

Progress Photos

See the most recent drone and site progress photos below!



Get in touch:

Construction Manager
James Harwell
 james.harwell@willmottdixon.co.uk

Building Manager
John Coalter
 john.coalter@willmottdixon.co.uk

Assistant Building Manager
Antony Rees
 Antony.Rees@willmottdixon.co.uk

Emergency Out of Hours
 0845 7335533 / 07976136349



Willmott Dixon
 Construction website



Fern Crw
 YouTube Channel

We Value Your Feedback

For any complaints or compliments please contact the above personnel or our Willmott Dixon Cardiff Office:
 Global Reach (Wing A) Celtic Gateway Dunleavy Drive, Cardiff, CF11 0SN T: 029 2022 1002 F: 029 2038 8206

Glyn-coch

a new primary school for Glyn-coch

In The Community

Architects & Engineers

Our recent enrichment day transformed Craig Yr Hesg and Cefn Primary into a hub of creativity, where every student stepped into the role of engineer, architect, and sustainability champion. The day began with a whole-school assembly, setting the stage for an exciting exploration of how design can shape a better future.

Throughout the day, pupils across all year groups took part in hands-on challenges led by industry professionals. Using Minecraft Education, Year 4/5 and 5/6 students tackled a Sustainability Challenge, reimagining how schools can be built with the environment in mind. Younger students embraced their own design missions, from creating sustainable schools to exploring sensory building concepts and constructing towers that tested both imagination and teamwork.

Creativity extended beyond construction, as all students contributed to a collective vote on nature-inspired wallpaper designs, bringing plants and animals into their vision of future spaces. Visits to the Living Lab offered further inspiration, with an interactive “eye spy” activity encouraging students to observe and reflect on real-world sustainable features.

The day concluded with a reflection assembly, where ideas, discoveries, and achievements were shared - highlighting not just what

students built, but how they thought, collaborated, and innovated.

It was a day that sparked curiosity and showed every child that they have the power to design the world around them.



The Fern Criw

The latest episode of The Fern Criw is now out! The Fern Criw are interviewing our recruitment partner, Rhys from O'Neill & Brennan. His interview covers all things Glyn-coch and talks about the importance of giving jobs to the local people and supporting the local community.

