



Social Services

Director - Neil Elliott

Jillian Davies

Workforce Development

Vision Products

Nicola Williams

Matt Jenkins

Regional Integration & Commissioning

Children's Commissioning Consortium Cymru (4C's)

Karen Benjamin

Cabinet Member:
Councillor Gareth Caple
(Adult & Childrens Services)
Councillor Sharon Rees
(Corporate Parenting)

Director of Children's Services

Annabel Lloyd

Director of Adult Services (job share)

Sian Nowell & Beth May

Organisational Change & Transformation

Catherine Tyler

Partnerships & Safeguarding

Emma Walters

Family Support & Care Planning

Julie Evans

Youth Justice Service

Lyndon Lewis

Fostering, Residential & IFSS (Intensive Support)

Claire Williams

Accommodation Services

Vacant

Commissioning, Contracts & Client Finance

Gwyneth Elliott

Learning Disabilities, Mental Health & Substance Misuse

Kate Riley

Safeguarding, Care & Support (job share)

Beth May & Tracey Cooper

Access, Enablement & Early Intervention

Mari Ropstad



Community Services

Director - Louise Davies
Champion - Neurodiversity

Cabinet Members:
Cllr Bob Harris
(Public Protection, Community Programmes & HDRC)
Cllr Scott Emanuel
(Culture, Leisure & Visitor Experiences)
Cllr Sharon Rees (YEPS, Prevention & Early Intervention)

Culture, Leisure & Visitor Experiences

Keith Nicholls (Service Director)
Caroline O'Neill

- Bereavement Services & Cemeteries
- Leisure Centres & Operations
- Sport Development
- Tourism, Visitor Attractions & Events
- Country Parks, Playgrounds & Play Facilities
- Adult Community Learning
- Arts, Culture & Heritage Services
- Libraries & One for All Services
- Park & Dare Theatre & Coliseum Theatre
- Garth Olwg Lifelong Learning Centre
- Work and Skills

Public Protection (Community Well-being & Resilience, Community Safety)

Rhian Hope (Service Director)

- Environmental Health
- Pest & Stray Animal Control
- Trading Standards
- Animal Health & Welfare
- Licensing

Gary Black

- Anti Social Behaviour
- CCTV
- Youth Engagement and Play Services
- Substance Misuse Commissioning (CTM)
- Domestic Abuse Services
- Prevention of Terrorism
- Community Cohesion
- Operational Delivery of Flying Start

HDRC

Zoe Lancelott

Early Help & Community Programmes

Syd Dennis

- RCT Together
- Community Development
- Community Resilience & Early Help
- Community and Childrens Services Commissioning
- Strategic Alignment of Early Years Programmes
- Community Centres and Hubs
- Neighbourhood Networks



Housing & Regeneration

Director - Simon Gale
Champion - LGBTQIA+ Inclusion

Cabinet Member:
Councillor Mark Norris
Councillor Louisa Addiscott
(Public Rights of Way)

Service Director, Housing and Regeneration

Derek James

Head of Planning

Jim Bailey

Head of Regeneration

Peter Mortimer

Head of Housing Strategy & Investment

Claire Hutcheon

Head of Community Housing

Cheryl Emery

Head of Major Development & Investment

Chris Jones

- Corporate Projects
- Major Development Proposals

- Regeneration Investment and Delivery
- Town Centres
- Business Support
- Economic Development
- Pride in Place Impact Fund

Andrea Virgo

- Shared Prosperity Fund Manager
- Regional Team
- Pride in Place Programme
- Local Growth Fund

- Housing Strategy
- Affordable Warmth
- Empty Homes
- Private Rented Sector
- Social Housing Grant
- Disabled Facilities Grants
- Building Control

- Homelessness and Prevention
- Housing Options and Solutions
- Social Letting Agency
- Homefinder
- Housing Support Grant
- Resettlement Team
- Diversionary Activity Team
- Housing Assessment and Support Team

Strategic Planning and Biodiversity Manager

Owen Jones

- Planning Policy
- Local Development Plan
- Biodiversity Obligations
- Living Landscapes
- Peatland Restoration

Planning and Enforcement Manager

Giles Howard

- Planning Applications & Advice
- Planning Enforcement
- Public Rights of Way
- Community Infrastructure Levy



Human Resources

Director - Richard Evans
Champion - Carers

Cabinet Members:
Councillor Maureen Webber BEM

Organisational Development

Debra Hughes
(Service Director)

Workforce Development

Julian Warburton
(Manager)

Learning & Development

Gemma Parsons
(Manager)

Occupational Health & Wellbeing

Johana Lai
(Manager)

Education, Employment, and Training (EETT)

Sian Woolson
(Manager)

Employee Relations

Michelle Lindley
(Head of Operational HR)

- Advice & guidance on Employment practices, processes & Employment Law.
- Managing the entire employee lifecycle from recruitment and selection, disciplinary and grievance, career and performance management, sickness and attendance.
- Policy Development
- Management of Change
- Direct responsibility for Environmental and Housing & Regeneration Services.

HR Managers

Andrea Bishop

Community and Social Services

Bethan Davies

Education and Inclusion Services

Ellen Williams

Education and Inclusion Services

Diversity & Inclusion

Melanie Warburton
(Manager)

- Public Sector Equality Duty
- Strategic Equality Plan (SEP)
- Staff Networks
- Equality Impact Assessment
- Awareness Sessions (e.g. reasonable adjustments)

Health & Safety

Adrian Perry
(Manager)

- Specialist advice and guidance
- Health and safety compliance
- Site visits and audits
- Health and safety strategy



Corporate Resources

Deputy Chief Executive, Group Director for Corporate Resources - Barrie Davies
S. 151 Officer

Cabinet Members:
Councillor Ann Crimmings
Councillor Andrew Morgan OBE
Councillor Christina Leyshon
Councillor Ros Davis

Director - Financial Services, Transformation & Asset Planning

Service Director - ICT & Digital Services

Service Director - Corporate Estates (Design & Maintenance)

Service Director -Pensions, Procurement & Transactional Services

Paul Griffiths

Tim Jones

Darren Williams

Ian Traylor

Service Directors

Financial Services

Marc Crumbie
Audit, Performance, Transformational Services, Asset Planning & Energy

Head of Technology

Gareth Pearce

Strategic Customer Services Manager

Chris Phillips

LEA Capital Projects

Simon Mantle

Refurbishment & Improvements

Rhys King

Major Capital & Strategic Projects

John Lewis

Maintenance & Compliance

Carl Hardman

Head of Operational Procurement

Ceri Millard

Head of Revenues and Benefits

Matthew Phillips

Operational Manager Revenues & Corporate Fraud

Matthew Davies

Payroll (iTrent) & Payment Service Manager

Louise Waghorn

Business Support Service Manager

Steve Vaughan

Pensions Service Manager

Catherine Black

Neil Griffiths

Stephanie Davies

Martyn Hughes

Community Services

Social Services

Education & Inclusion Services

Financial Reporting

Corporate Resources, Environmental Services, Housing & Regeneration, HR, Legal & Democratic. Capital Programme.

Head of ICT Operations

Emma Williams

Head of Digital Transformation

Jessica Allen

Head of Data, Systems & Information

Lisa Gorringe

CTM Regional WCCIS

Education & Inclusion Services

Director - Dr. Marium Haque

**Cabinet Member:
Councillor Sharon Rees**



Head of Service -
Transformation
& Data

Catrin Edwards

Service Manager, Data,
systems & Processes

Antonia Thomas

Senior Manager,
Governor Support &
Emergency Planning

Non Morgan

Schools Admissions
Team Leader

Claire Christy

Bromcom MISS Schools Lead

Greg Morris

Head of
Attendance, Safeguarding
& Wellbeing

Daniel Williams

Business Manager, Catering

Lisa Kidner

AWS Team Leaders

***Kimberley Bowditch-
Jones/ Elaine Howells***

Education Safeguarding Lead

Joanne Morgan

Lead for Community
Focused Schools

Hayley Jacobs

Schools Family
Learning Coordinator

Lyndsey Williams

Head of School
Organisation & WESP

Lisa Howell

Lead for Strategic
Planning & MIM

Nicola Goodman

Senior 21st Century
Schools Project Manager

Denise Humphries

WESP Lead

Hannah Bebb

Welsh Immersion Lead

Cerys Richards

21st Century Support
& Compliance

Chantal Ferguson

Head of School
Improvement

Andrew Llewellyn

Deputy Head of
Secondary
Achievement

Richard Young

14-19 Future
Pathways
Coordinator

Kate Owen

Professional Lead
for Music

Aeddan Williams

School Improvement Officers (SIO's)

Deputy Head of
Primary
Achievement

Sarah Haggett

EY Advisory Teachers
for Registered
Education Providers

***Vicky Baldock/ Claire
Lloyd Thomas***

Digital Strategy Officer

James Protheroe

Head of Inclusion
Services

Helen Howells

Head of Educational Psychology

Rob Kempson

Head of Learner Support

Kate Hill

Head of ALP/EY

Suzanne Davidson

Virtual School Headteacher

Linda Hawkins

Head of Centre at Ty Gwyn

Victoria Cox-Wall

Head of Centre Tai Education

Marisa Chadney



Environmental Services

Director - Stephen Williams

Cabinet Members:
Councillor Andrew Morgan OBE
(Highways & Capital Infrastructure)
Councillor Louisa Addiscott (Public Spaces)
Councillor Ann Crimmings (Waste & Recycling)

Service Director - Highways & Engineering

Andrew Stone

Service Director - Public Spaces & Integrated Transport

Alistair Critchlow

Head of Infrastructure & Asset Management

Jacqueline Mynott

Head of Traffic & Transportation

Tim Phillips

Head of Streetcare

Vacant

Head of Integrated Transport

Geraint Roberts

Highways Infrastructure & Asset Management

Highways & Public Spaces Structures

Strategic Projects - Delivery

Flood Risk & Emergency Planning

Public Spaces

Waste Services

Parking Services

Integrated Transport

Tips & Safety

Streetcare & Highways Operations

Highway Strategy & Regulation

Facilities Cleaning

Fleet Services



Legal & Democratic Services

Director of Legal and Democratic Services - Andy Wilkins
Statutory Monitoring Officer

Cabinet Members:
Councillor Ann Crimmings
Councillor Maureen Webber BEM



Service Director, Democratic Services, Welsh Language & Communications - Christian Hanagan
Statutory Head of Democratic Services

Legal Services

Coroner Service

Louise Roberts

- Community
- Childrens
- Litigation
- Education

- Corporate
- Planning & Regeneration
- Frontline
- Legal Business Support

Cara Miles
(Service Director)

Simon Humphreys
(Service Director)

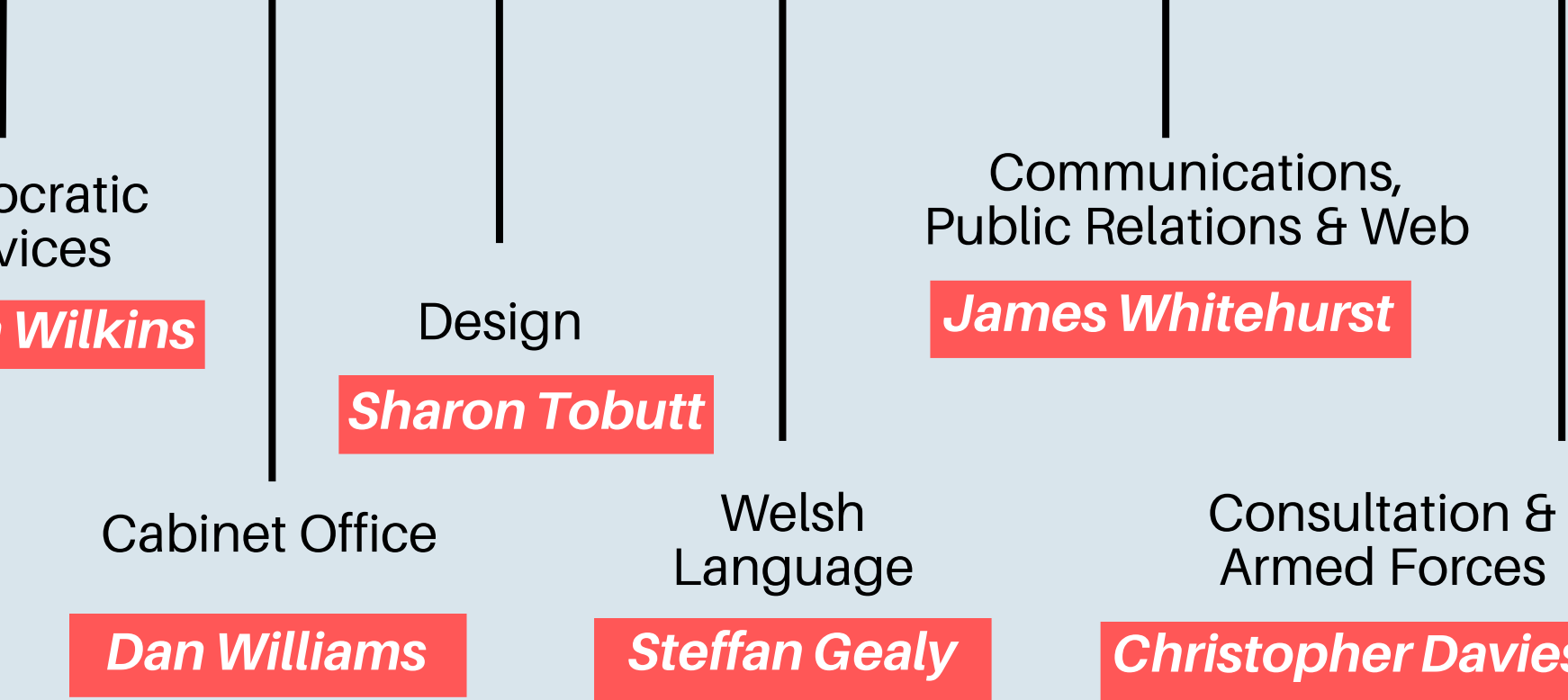
Insurance
Andrew Gough

Freedom of Information
Claire Gummer

- Property
- Land
- Registrars

Paula McCarthy
(Service Director)

Electoral Services
Huw Davies



Emma Wilkins

Sharon Tobutt

Cabinet Office
Dan Williams

Welsh Language
Steffan Gealy

Communications, Public Relations & Web
James Whitehurst

Consultation & Armed Forces
Christopher Davies