

# WELCOME TO THE RCT TOGETHER COMMUNITY DEVELOPMENT TEAM NEWSLETTER

ISSUE: 08  
APRIL 2025 – JUNE 2025

---

RCT TOGETHER

SUPPORTING COMMUNITIES AND RESIDENTS TO THRIVE



[RCT Together - Supporting Communities and Residents to Thrive](#)

## Content:

RCT Together – 10 Year Anniversary –  
Celebrating Community Groups - Page 2 - 7

SPF Micro Grant Summer Activities –  
Funding Huddle Events – Page 8

Dementia Action Week 2025 – Page 9

Volunteering Week 2025 – Volunteering Pop  
Up Hubs – Page 10

Contact the Team – Page 11



# RCT TOGETHER - CELEBRATING 10 YEARS



**RCT Together was established in April 2015 to assist in co-ordinating the approach and support provided to individuals/community groups wishing to Manage Council Assets to deliver community services.**

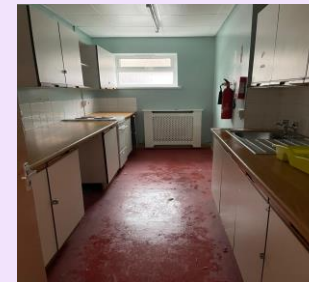
**Let's catch up with some community groups who started their journey, and who continue to open the doors to much needed, and valued community assets.**

**Lee Gardens Pool Committee** also celebrates its 10<sup>th</sup> anniversary.

“We were one of the first groups to benefit from the advice and support of RCT Together and it's been a partnership that has spanned the whole 10 years and brought about 2 asset transfers – Lee Gardens Pool and Penrhiwceiber Welcome Centre.

In 2015 our group came together to bring Lee Gardens Pool back into use so that children and families had somewhere safe and enjoyable to spend the summer Holidays.

By 2025, with the support of our many volunteers, Penrhiwceiber Welcome Centre is very much the hub of the village providing many activities and services for the community to enjoy and benefit from”.







# RCT TOGETHER - CELEBRATING 10 YEARS



**RCT Together was established in April 2015 to assist in co-ordinating the approach and support provided to individuals/community groups wishing to Manage Council Assets to deliver community services.**

**Let's catch up with some community groups who started their journey, and who continue to open the doors to much needed, and valued community assets.**

## Canolfan Pentre

“Since opening our doors at the start of 2016 we’ve welcomed hundreds of community members for a vast variety of classes, events and get togethers. We’ve been incredibly fortunate to work in partnership with neighbouring local charities, businesses and professionals to provide practical, as well as emotional support and advice.

Through our journey, we’ve seen volunteers move onto full time employment, we’ve generated employment within the centre and provided opportunities to our volunteers and employees to up-skill; enabling them to grow in confidence and move on.

When the idea of Canolfan Pentre was born, the founder members turned to the Council for advice and guidance. As one of the very first asset transfer projects in RCT, that advice and support from day one was invaluable and has continued to this day – this has been a pillar in the continuing success of the building. Canolfan Pentre paved the way for other charities and community groups in our local area, inspiring them to breathe life into old dilapidated and dis-used buildings. Our achievement inspired others and clearly displayed that asset transfers could be a success for all.

There are very many partners we need to thank, including Coalfields Regeneration Trust and the National Lottery, but above all, we will forever be grateful for the support we received from Deb and Lynne at the RCT Together Team. Without this dynamic duo, our dream at the beginning of the journey would have never come to fruition”.



Community Cafe	9am - 2pm
Top Up Shop	9:30am - 11:30am
Sings	11:30am - 3pm
After School Club	4pm - 5:30pm
NAS RCT Youth Club	6:30pm - 8pm
<b>TUESDAY</b>	
Community Cafe	9am - 11:30am
Top Up Shop	9:30am - 11:30am
Parent & Toddler	9:30am - 11:15am
Dementia Group	12pm - 2pm
<b>WEDNESDAY</b>	
Community Cafe	9am - 2pm
Top Up Shop	9:30am - 11:30am
Sings	11:30am - 3pm
After School Club	4pm - 5:30pm
<b>THURSDAY</b>	
Community Cafe	9am - 1pm
Top Up Shop	9:30am - 11:30am







# RCT TOGETHER - CELEBRATING 10 YEARS



**RCT Together was established in April 2015 to assist in co-ordinating the approach and support provided to individuals/community groups wishing to Manage Council Assets to deliver community services.**

**Let's catch up with some community groups who started their journey, and who continue to open the doors to much needed, and valued community assets.**

## **The Fern Partnership.**

“The Fern Partnership is a well-respected, award winning Social Enterprising Charity dedicated to proactively serving the communities it operates within. Our charity was created to support children, families, and the wider community in need of vital support for a range of day-to-day and long-term needs.

Our impact and reach primarily lies with managing six childcare facilities known as Little Ferns, strategically situated across the most deprived areas of RCT. We've repurposed 2 disused community buildings in Ferndale and Maerdy into vibrant community hubs as part of the RCT Together Asset Transfer scheme.

Ferndale Community Hwb – The Fern Partnership acquired the Community Hwb in the summer of 2019. The Partnership has since taken on the role of lead partner in the delivering of community services and activities at the hub, which accommodates the Council Library Service, publicly accessible computers, Little Ferns Day Nursery, a sensory room, an outdoor classroom, a community room (for hire) and office space for Fern Partnership Staff.

Maerdy Community Hwb The Fern Partnership successfully completed a community asset transfer of the former Maerdy Library, which reopened as 'Community Hub Maerdy' in 2015. This facility provides a range of opportunities for the local community to meet up, socialise, and gain new skills via a range of classes and community activities, including After School Club, Holiday Playschemes, Work Clubs, Essential Skills, Gardening Club, Mens' Shed, Mums & Prams, exercise classes, and a range of other community-led activities”.





# RCT TOGETHER - CELEBRATING 10 YEARS



**RCT Together was established in April 2015 to assist in co-ordinating the approach and support provided to individuals/community groups wishing to Manage Council Assets to deliver community services.**

**Let's catch up with some community groups who started their journey, and who continue to open the doors to much needed, and valued community assets.**

## CRT Hwb Cana

“CRT Hwb Cana is a vital community hub for Penywaun, offering services such as Smart Money Cymru Community Bank, Citizen Advice, and cancer support through CRT Together in partnership with Macmillan Cancer Support.

Originally a thriving community centre until 2017 when it was handed back to the Local Authority, the Coalfields Regeneration Trust (CRT) took on the freehold of the asset after the building fell into disrepair.

This was a strategic decision by our trustees as Hwb Cana have the potential to provide a much-needed facility to lever in support, services and training for the people of Penywaun. Community engagement guided the refurbishment, resulting in updates to the building's layout and colour scheme, and even a name change to honour its history as Cana Chapel. The revitalised building officially opened in April 2023, following £400,000 renovation funded by various governmental programmes and generous donations and resulted in our project coming the regional winner for the prestigious RICS Award.

A building isn't just bricks and mortar – it is the people of Penywaun who have helped ensure that this asset remains a valued and well used community resource”.







# RCT TOGETHER - CELEBRATING 10 YEARS



**RCT Together was established in April 2015 to assist in co-ordinating the approach and support provided to individuals/community groups wishing to Manage Council Assets to deliver community services.**

**Let's catch up with some community groups who started their journey, and who continue to open the doors to much needed, and valued community assets.**

## **Tonyrefail Skate Park**

The RCT Together Team attended the official opening of the Friends of Tyn Y Bryn Skate Park and Outdoor Gym in October 2024.

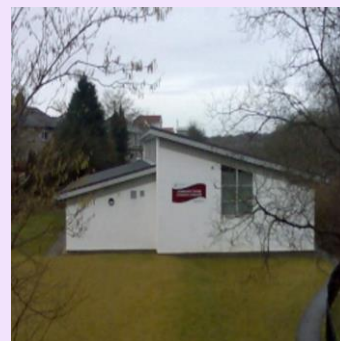
After 5 years of hard work, the committee were successful in levering in circa £355k of funding to develop the accessible Skate Park and Outdoor Gym at Tyn Y Bryn Park site in Tonyrefail – a true example of community resilience and determination.



## **Bryncae Community Centre**

“Llanharan Community Council undertook an asset transfer of Bryncae Community Centre in February 2025.

Throughout the community asset transfer process and beyond RCT Together provided invaluable support, aiding us in ensuring that we understood the process and helping shape the strategy of the centre going forward”.



## **Gelligaled Park - MUGA**

“The MUGA would not have been built without the amazing support received by Deb and especially Steve who was fantastic.

We found the asset transfer process challenging but with continuous support provided by Steve, the MUGA was constructed and has been extremely well used by children and parents visiting the park”.







# RCT TOGETHER - CELEBRATING 10 YEARS



RCT Together was established in April 2015 to assist in co-ordinating the approach and support provided to individuals/community groups wishing to Manage Council Assets to deliver community services.

Let's catch up with some community groups who started their journey, and who continue to open the doors to much needed, and valued community assets.

## Y Siop Fach Sero

"Y Siop Fach Sero opened in March 2023 in the Old Ferndale Library, and after a rather rocky start we are yma o hyd!

We provide a zero-waste, ethical, fair-trade shopping destination for the people of Ferndale, the Rhondda Fach and beyond, alongside a vegetarian/vegan coffee shop and café with locally sourced products. We are friendly, welcoming, inclusive community space hosting workshops, activities, groups and events.

It's been a rollercoaster, with many pitfalls and bumps in the road – a real learning curve.

Lessons have been learned, and we are definitely still learning! Lots of work still to do!

People have come and gone, lots of improvements have been made and we are still evolving. It's hard work. There aren't enough hours in the day! BUT we have wonderful, faithful, regular customers who keep us believing.

We have great people in the RCT Together Community Development Team, and we look forward to working more closely with them as we strive to develop new ideas for our community. Onwards and upwards for Y Siop Fach Sero – pop in and see us soon!"



Y SIOP FACH SERO

## What is in a sustainability hub?

- Zero waste shop
- Zero waste café (as much as is possible)
- Charity Shop
- Repair Café
- Access to Bentyg (library of things)
- Workshops
- Community warm space



# SPF Micro Grant Summer Activities Funding Huddle Events



## Funding Huddle Events – Rhondda, Cynon and Taf

Held at 3 venues across RCT, the team offered face-to-face support to community groups looking to access the SPF Micro Grant for Summer Activities.

Supported by external agencies including Interlink, Cwmpas, RCT Work and Skills, RCT Climate Action Network and RCT Welsh Language for additional support, funding opportunities and networking.

**36 community groups attended and 50 individuals**

Of those groups, **21** submitted applications and all were successful in obtaining funding accumulating to the amount of **£14404.70!**



Very helpful,  
easy to  
understand,  
thank you



Fantastic event,  
great information,  
team work second to  
none in great  
environment



# RCT TOGETHER

SUPPORTING COMMUNITIES AND RESIDENTS TO THRIVE







# TURNING PONTY BLUE 2025



Once again, working with local partners from both public and third sectors, we “Turned Ponty Blue” to mark Dementia Action Week. From blue ribbons and bunting to local buildings lit up blue, it was fantastic to see the community come together to raise awareness of dementia.



A diverse programme of dementia-friendly events brought people together – including a heartfelt school choir performance by students from Maes Y Coed Primary School, a 70s disco at Calon Taf, an information pop-up event at Garth Olwg, and many more – each offering vital advice, support, and connection for individuals living with dementia and their loved ones.



**Ceri Higgins, Chair of the Dementia Friendly Pontypridd Steering Group**, reflected on the impact of the campaign, saying: "Turning Ponty Blue is about connection. It's about bringing people together, ensuring those affected by dementia feel supported, and celebrating the power of community."

## RCT TOGETHER

SUPPORTING COMMUNITIES AND RESIDENTS TO THRIVE







## Volunteering Pop Up Events

As part of volunteering week, we're shining a spotlight on the incredible community groups and individuals who give their time to make a difference to their communities.

In partnership with Interlink RCT and local DWP Job Centres, **2 Volunteering Events** were held in Rhondda Fach and Rhondda Fawr, to create pathways for individuals looking to volunteer in their local area.

**23 local Community Groups** attended the events to advertise their volunteering opportunities with over **100 individuals in attendance.**



Amazing Event!  
Lots of  
engagement and  
very positive  
feedback



This was helpful  
event, learning  
what the  
various  
community  
groups have to  
offer







And don't forget you can contact any member of the team 😊

**Get in touch with the team**

**Community Asset Transfer**

**Get in touch with the team**

**Community Resilience Hub and Neighbourhood Network Team**

**Get in touch with the team**

**Funding and Resource Support Team**



Ariennir gan  
**Lywodraeth Cymru**  
Funded by  
**Welsh Government**



Funded by  
**UK Government**



Wedi ei ariannu gan  
**Llywodraeth y DU**