

rhondda cynon taf

community infrastructure levy

ardoll seilwaith cymunedol

Community Infrastructure Levy

Charging Schedule

31st December 2014

The Charging Schedule

The Charging and Collecting Authority is Rhondda Cynon Taf County Borough Council.

Date of Approval

This Charging Schedule was considered by full Council on 10th December 2014.

Date on which the Charging Schedule has effect

This Charging Schedule has effect from 31st December 2014.

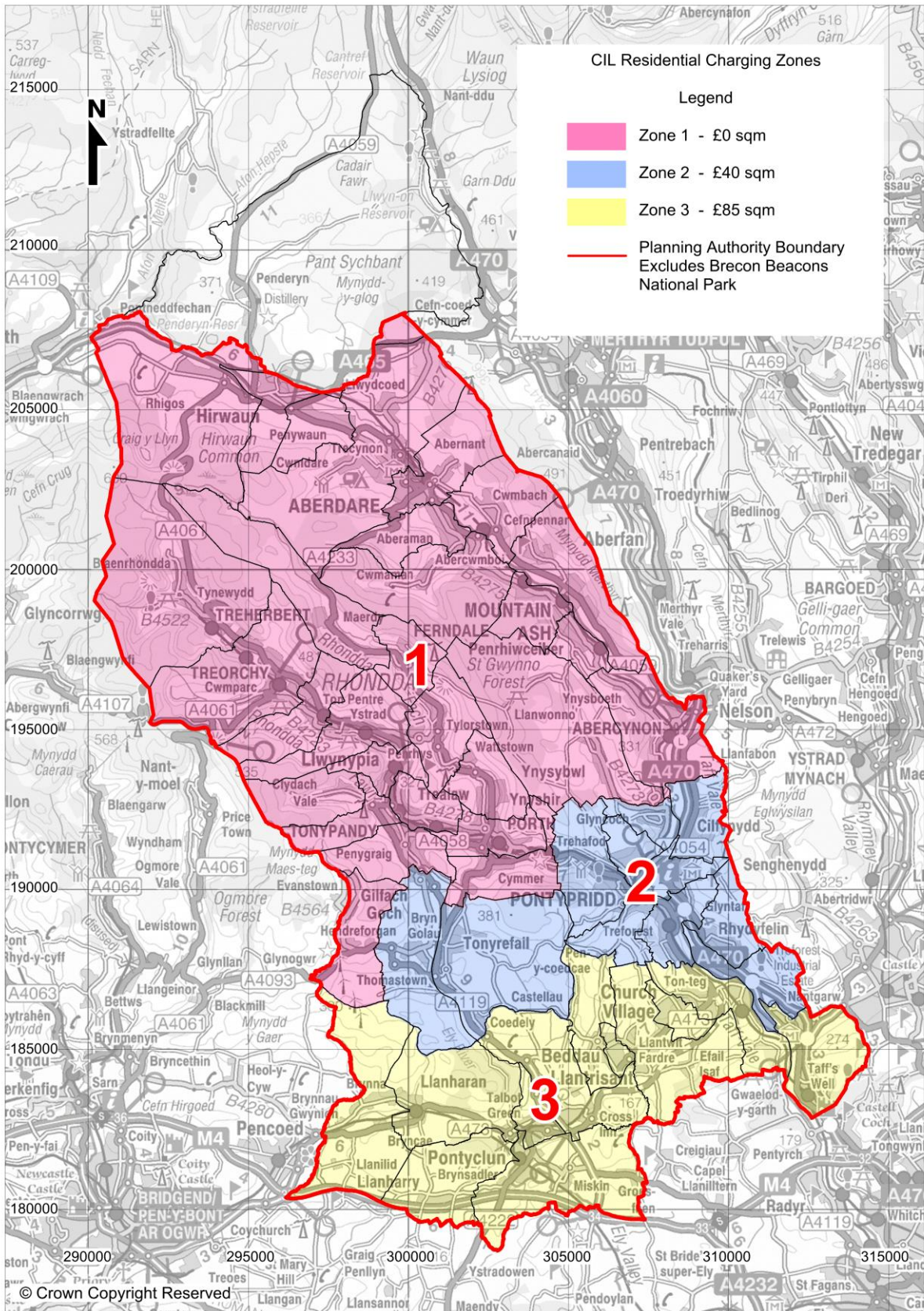
Statutory Compliance

This CIL Charging Schedule has been issued, approved and published in accordance with Part 11 of the Planning Act 2008 (as amended by Part 6 of the Localism Act 2011), and the Community Infrastructure Levy Regulations 2010 (as amended).

Rhondda Cynon Taf County Borough Council CIL Rates

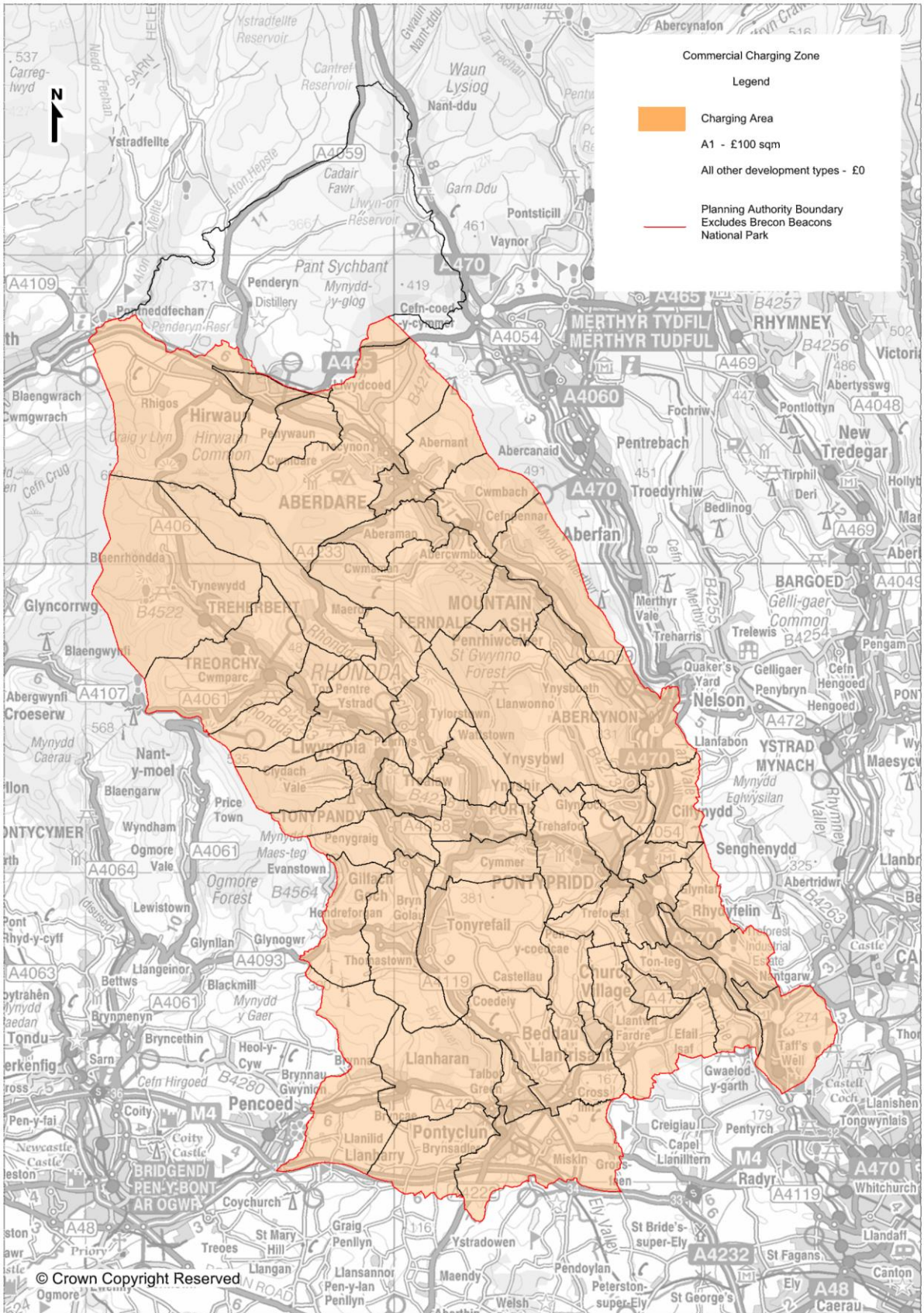
CIL will be charged in pounds sterling (£) at differential rates according to the type of development set out in the schedule below:

<i>Development Type</i>	<i>CIL rate £/sq m</i>
Residential Development	
Residential Zone 1	£0
Residential Zone 2	£40
Residential Zone 3	£85
Commercial Development	
Retail (A1)	£100
All Other Development Types	£0



The Residential Zones 1, 2 and 3 are shown on the Ordnance Survey map extract contained in the CIL Charging Schedule. With the exception of that part of Rhondda Cynon Taf that falls within the boundary of the Brecon Beacons National Park (the responsibility for setting and collecting CIL in this area will rest with the National Park Authority). All wards fall into either Zone 1, 2 or 3; to provide clarity the following table identifies the Zone in which each ward falls.

Charging Zone	Wards Included
Zone 1	Rhigos, Hirwaun, Pen-Y-Waun, Aberdare West/Llwydcoed, Aberdare East, Aberaman North, Aberaman South, Cwmbach, Mountain Ash East, Mountain Ash West, Penrhiwceiber, Abercynon, Ynysybwl, Treherbert, Treorchy, Pentre, Ystrad, Llwynypia, Clydach, Tonypany, Trealaw, Ynyshir, Tylorstown, Ferndale, Maerdy, Penygraig, Cymmer, Porth, Gilfach Goch
Zone 2	Glyncoch, Cilfynydd, Rhondda, Pontypridd Town, Trallwng, Rhydfelen, Hawthorn, Treforest, Graig, Tonyrefail East, Tonyrefail West
Zone 3	Taffs Well, Pontyclun, Ton-Teg, Church Village, Llantwit Fardre, Tyn-y-Nant, Beddau, Llantrisant Town, Talbot Green, Llanharry, Llanharan, Brynna



Calculation of CIL Charge

The CIL charge to be paid by a development will be calculated in accordance with Regulation 40 of the Community Infrastructure Levy Regulations 2010 (as amended) and as may be amended by future regulations from time to time.

As set out in these regulations, CIL charges will be index linked to the Building Cost Information Service (BCIS) All-in Tender Price Index.

Further Information

More detailed information on the application of CIL in Rhondda Cynon Taf is available on the Council's website.

<http://www.rctcbc.gov.uk/en/environmentplanningandwaste/planning/communityinfrastructurelevy/aguidetocil/aguidetocil.aspx>