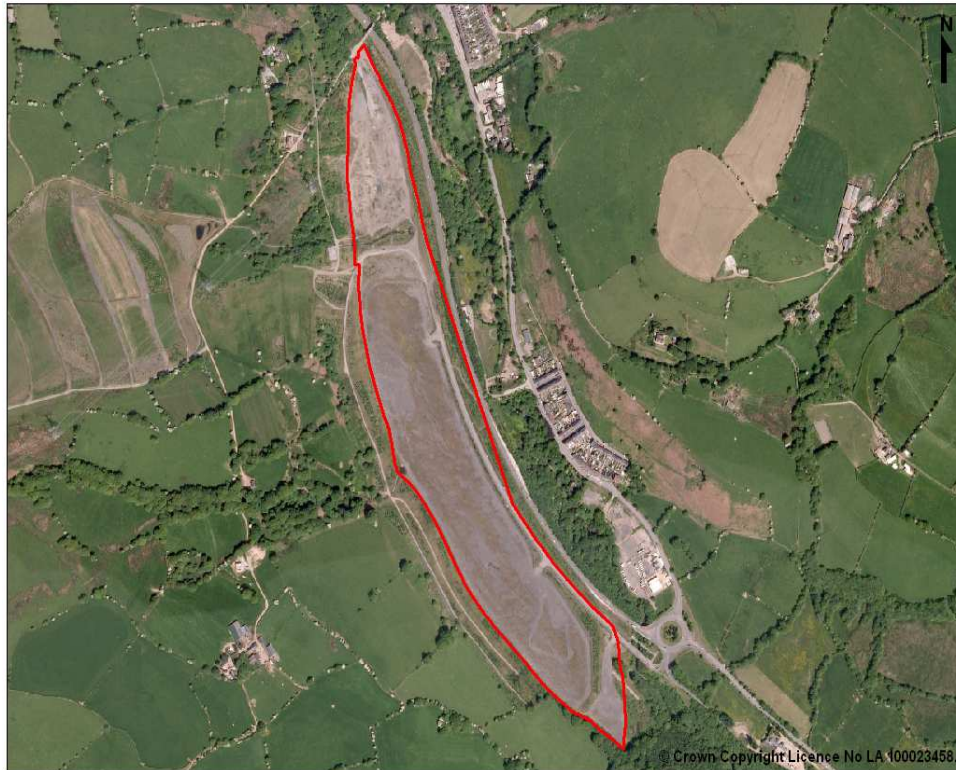


# Coed Ely, Tonyrefail



**Site Size:**  
14.32 Hectares

**Landowner:**  
Detail available on request

**LDP Allocation:**  
SSA 14.1

**Type:**  
Employment (Use:  
B1 –  
Business/Light  
Industrial, B2 –  
General Industrial)

## Summary:

This reclaimed brownfield site of a colliery and coking works comprises 3 vacant development plateaus and a spine road connecting to a roundabout on the A4119 Ely Valley Road.

## Additional Information:

<i>Distance to:</i>	<i>Miles:</i>
An A road	0.2
Neighbourhood Centre (Llantrisant)	3.1
Railway Station	4.5

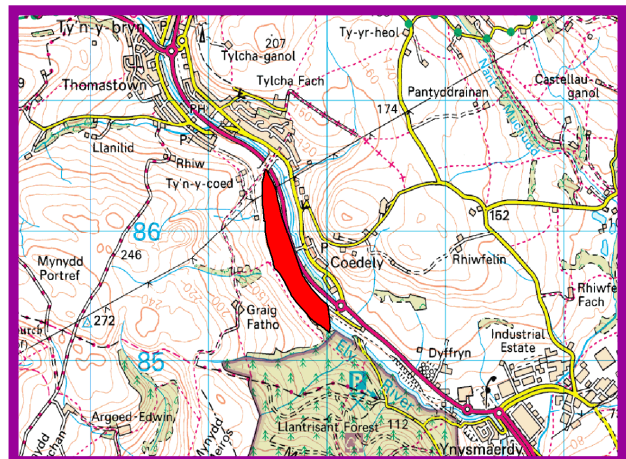
## Key Constraints:

No known constraints.

## Contact Details:

Spatial Development Team  
Rhondda Cynon Taf County Borough Council  
Floor 3, Sardis House  
Sardis Road  
CF37 1DU

☎ 01443 494730  
✉ LDP@rctcbc.gov.uk



© Crown Copyright. RCTCBC Licence No LA 100023458

**EMPLOYMENT SITE**