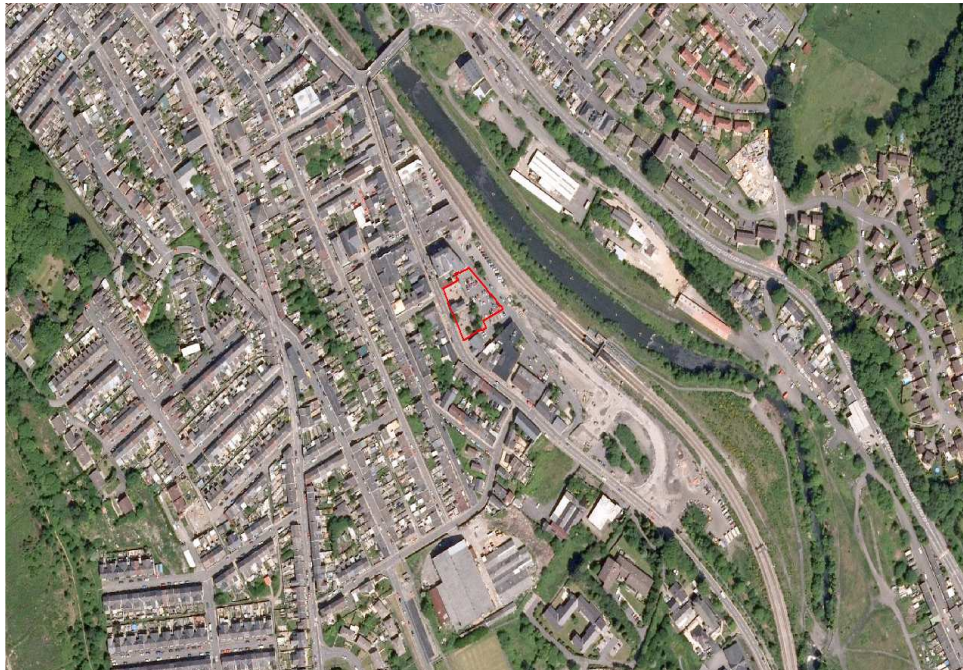


Land at Oxford Street, Mountain Ash



Site Size:

0.17 Hectares

Landowner:

Details available on request

LDP Allocation:

NSA 17.1

Type:

Retail

Summary:

Land is allocated for shopping development of about 950m² net floor-space will provide a combination of convenience and comparison goods. Of the eight key settlements, Mountain Ash has the only centre with a site potentially available for redevelopment. Development of the Oxford Street site for unit shops should benefit the town and its centre environmentally, as well as socially and economically, by making appropriate use of vacant previously developed urban land.

Additional Information:

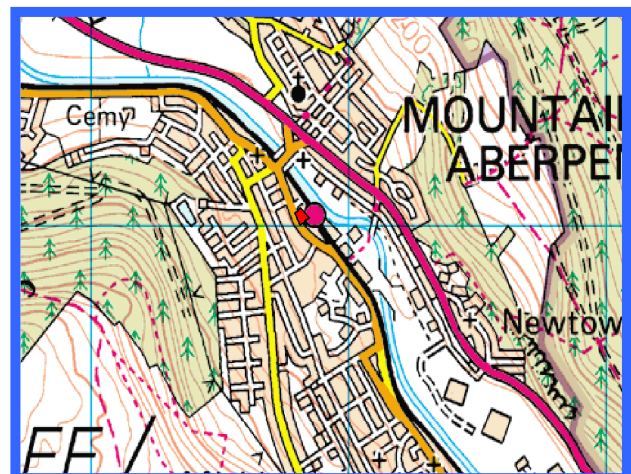
<i>Distance to:</i>	<i>Miles:</i>
An A road	0.0
Key Settlement (Mountain Ash)	0.0
Railway Station	0.27

Key Constraints:

No known constraints.

Contact Details:

Spatial Development Team
Rhondda Cynon Taf County Borough Council
Floor 3, Sardis House
Sardis Road
CF37 1DU



© Crown Copyright. RCTCBC Licence No LA 100023458

☎ 01443 494730

✉ LDP@rctcbc.gov.uk

RETAIL SITE