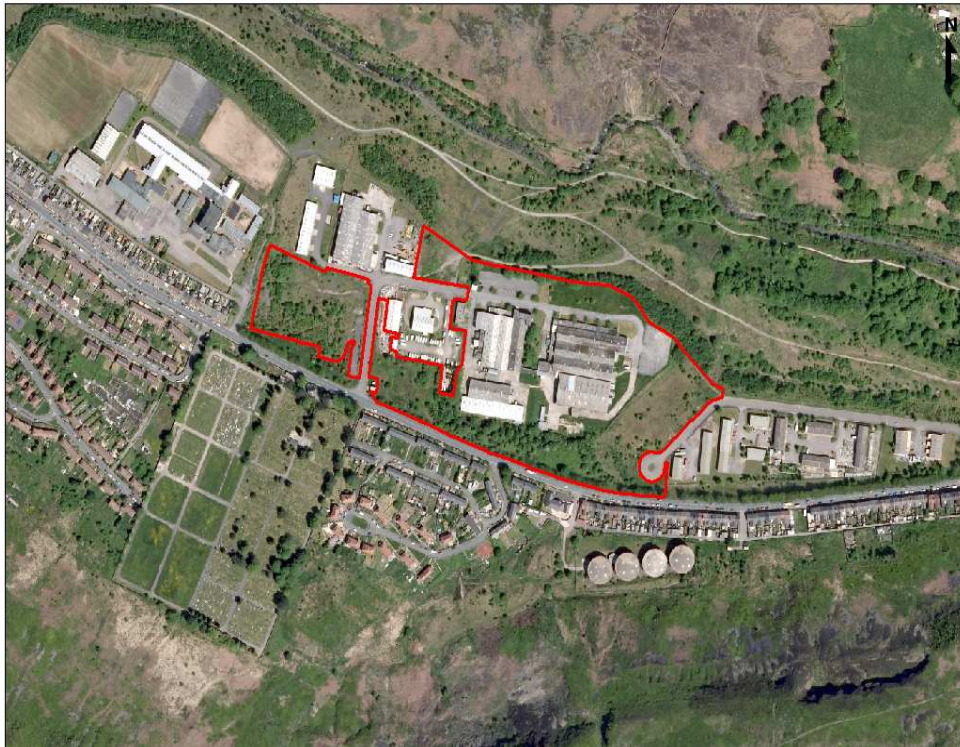


Ferndale & Highfield Industrial Estates



Site Size:
8.38 Hectares

Landowner:
Detail available on request

LDP Allocation:
NSA 14.1

Type:
Employment (Use: B1 – Business/Light Industrial, B2 – General Industrial, B8 – Storage and Distribution).

Summary:

The allocation comprises of a series of adjoining areas totalling 8.38 hectares of cleared, brownfield land located within an existing industrial area between Ferndale and Maerdy. There are no known constraints on this flat site, which may be accessed from both Ferndale and Highfields Industrial Estates.

Additional Information:

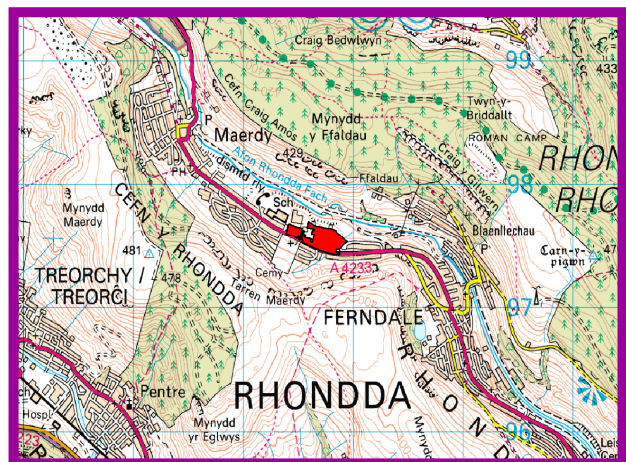
<i>Distance to:</i>	<i>Miles:</i>
An A road	0.1
Key Settlement (Ferndale)	1.3
Railway Station	6.5

Key Constraints:

No known constraints.

Contact Details:

Spatial Development Team
Rhondda Cynon Taf County Borough Council
Floor 3, Sardis House
Sardis Road
CF37 1DU



© Crown Copyright. RCTCBC Licence No LA 100023458

☎ 01443 494730
✉ LDP@rctcbc.gov.uk

EMPLOYMENT SITE